



Track Lighting

LED / Low Voltage / Line Voltage

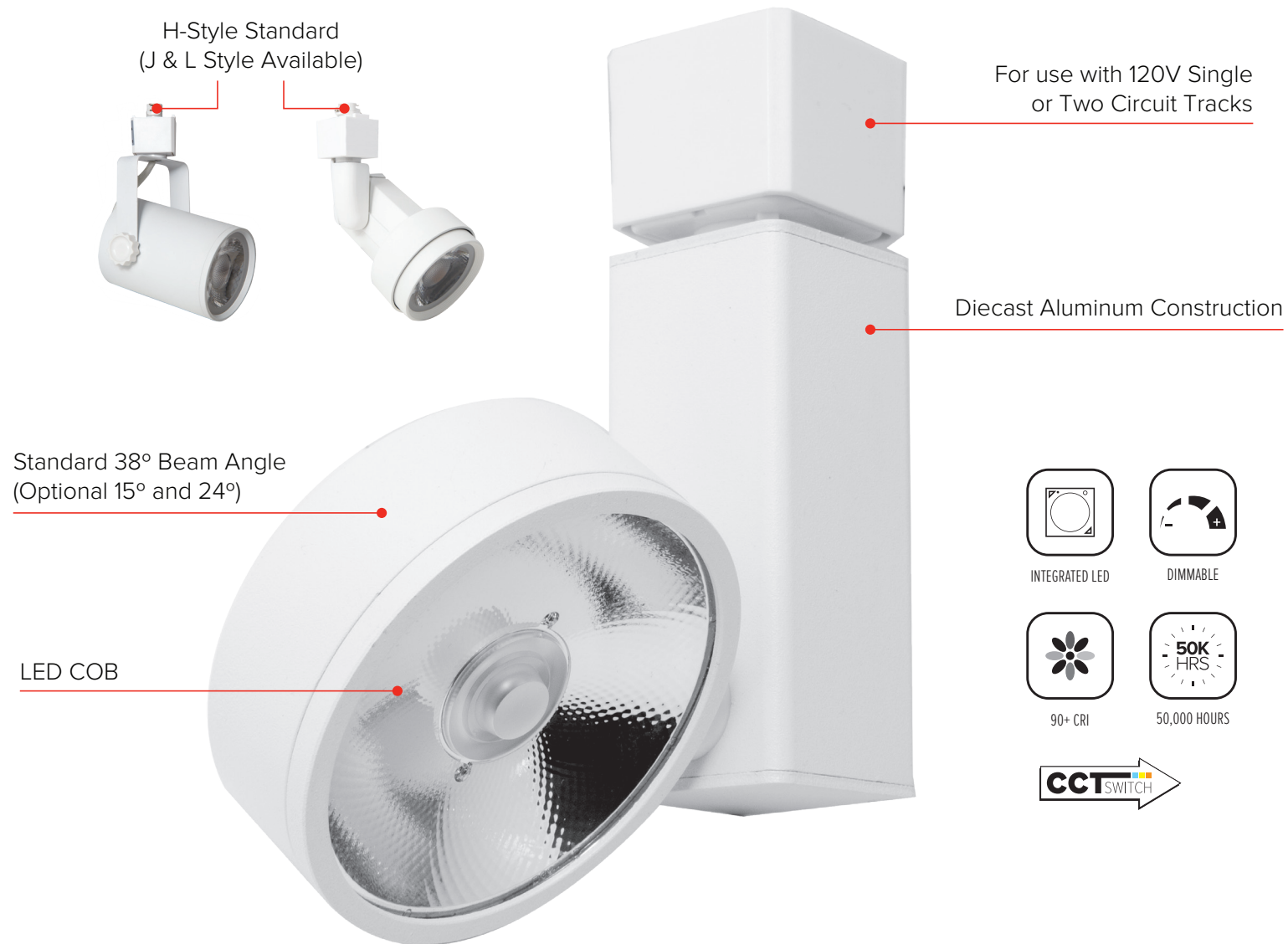
LED Track Lighting, **Tar Buck & Wall Wash**

Low Voltage, **GU10, Accessories & Pendants**

Track & Pendant Lighting

Track Lighting has become an instant style upgrade to any home or commercial space. ELCO has put a lot of thought and care into the design and manufacture of our Track Lighting line. Our fixtures are a combination of style and sophistication that will match any room design adding drama and style to a define space.

Integrated LED Track Lighting



Integrated LED Track Lighting

- Track Fixtures from 600 to 3000 lumens
- Available in a variety of beam angles, finishes and styles.
- Standard H style connectors, J & L styles available.

- 120V input
- Triac/ELV dimmable
- Diecast Aluminum construction
- For use with 120V Single or Two Circuit Tracks



Input Power	8W - 40W
Lumens	400 - 3150
Voltage	120V
Color Temp	3000K - 4000K
Beam Angle	15° - 60°

LED Windsor™



LED Stain™



LED Cleat™ Monopoint



LED Koto Sylo™



LED Gordian™



LED Highpoint™

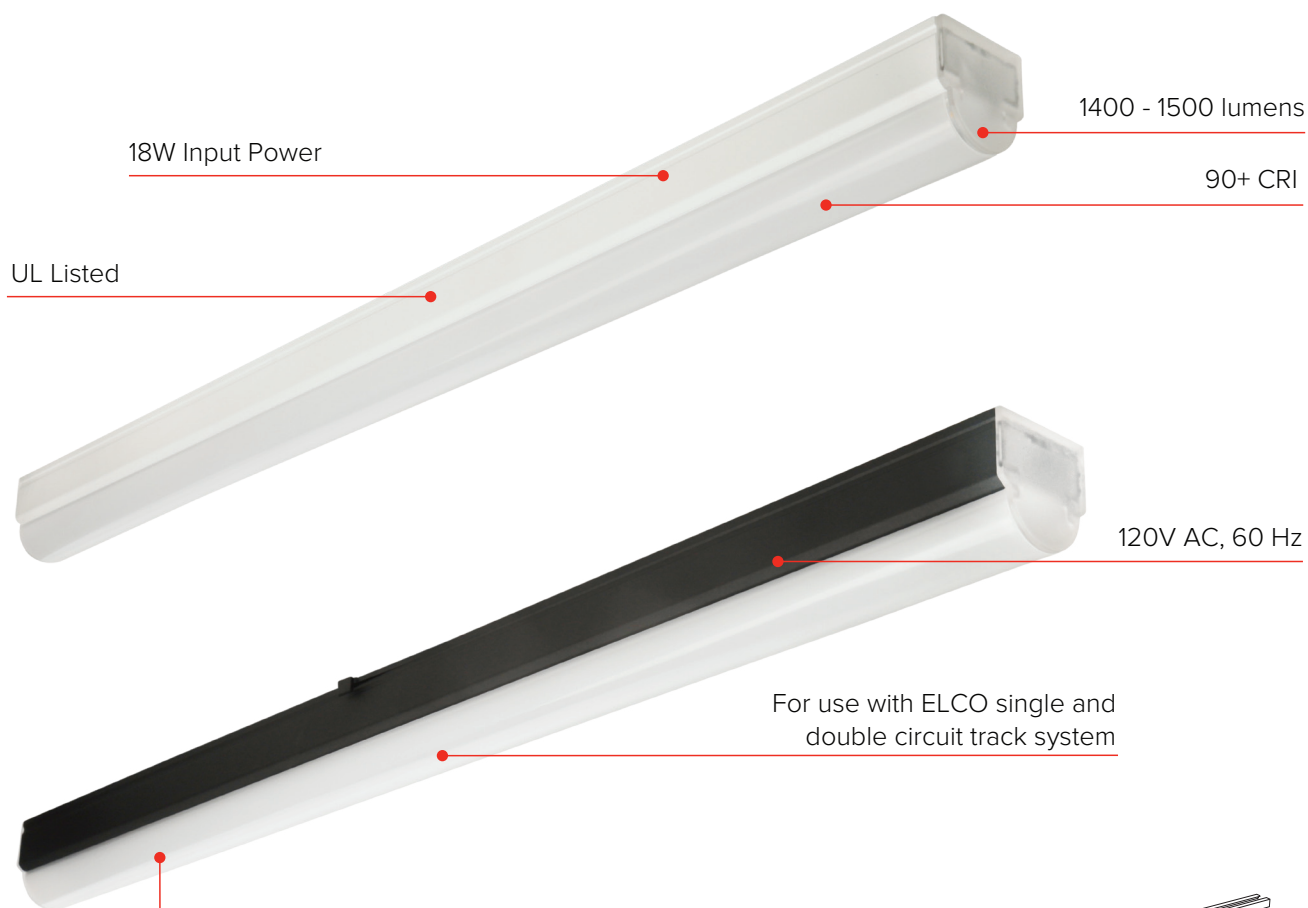


LED Transom™



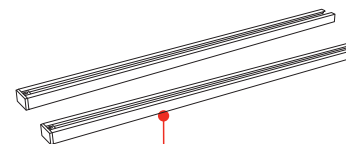
LED Tarbuck™

- Integrated LED Linear Track Fixture
- Installs directly onto track
- 120V input
- Triac/ELV dimmable
- Simply uses track for general illumination and linear lighting



Input Power	18W
Lumens	1400 - 1500
Voltage	120V AC, 60 Hz
Color Temp	3000K - 4000K
CRI	90+

Single & Two Circuit Track
Track supplied with dead end
and mounting hardware



Wall Wash LED Integrated Track Fixtures



- From 12" to 27" Wall Wash integrated LED
- With optional louver in a variety of color temperatures and finishes
- 120V input
- Triac/ELV dimmable
- Frosted lens for even light distribution
- 90° tilt, 358° rotation
- 50,000 hours life-span

LED Distell™ 12" - 24"

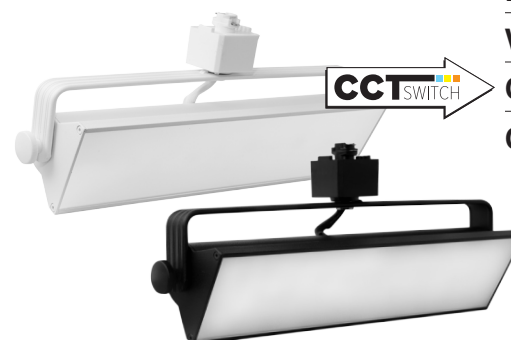


12" & 24" Wall Wash Front Louver

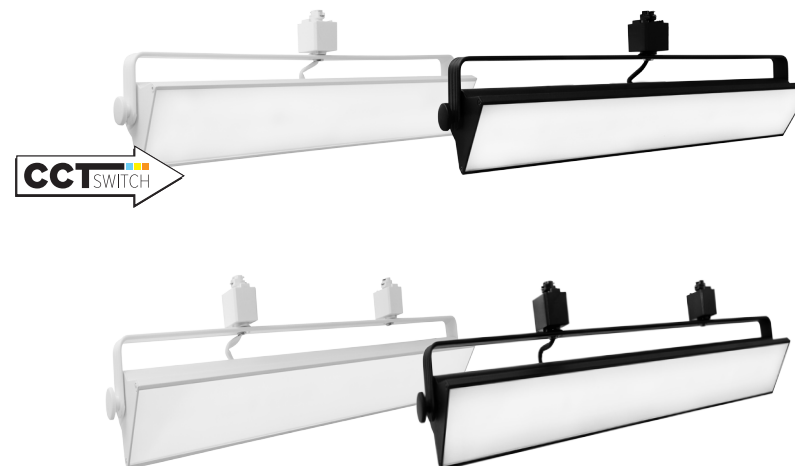
Input Power	30W - 60W
Lumens	2400 - 5000
Voltage	120V
Color Temp	3000K - 4000K
CRI	90+



LED Pipe™ 12" - 27"



Input Power	20W - 58W
Lumens	1400 - 4300
Voltage	120V
Color Temp	3000K - 4000K
CRI	90+



Optional Front Louver Available

Low Voltage MR16 GU5.3 Track Fixtures

- Designed for use with MR16 GU5.3 track heads
- ETL family available for LED lamps with no minimum load
- Standard H style connectors, available for J and L style
- Endless options of finishes and designs

H-Style Standard
(J & L Style Available)



Low Voltage Transformer
For use with 120V Single
or Two Circuit Tracks

ETLD Option has no minimum load transformer

Wide selection of finishes and styles
to match any room design

Fixtures accommodates
LED (ETLD) and Halogen Lamps

MR16 Track Fixtures



MR16 Builder's Track Kits



MR16 Track 22 Fixtures



MR11 Track Fixtures



GU10 Track Fixtures

- Designed for use with GU10 LED and halogen lamps
- Endless options of finishes and designs
- Standard H style connectors, available for J and L style

(for LED or Halogen Lamps)

H-Style Standard
(J & L Style Available)



For use with 120V Single or Two Circuit Tracks

Wide selection of finishes and styles
to match any room design



Fixtures accommodates
GU10 MR16 LED or Halogen Lamps

Dimmability based on lamp



Line Voltage GU10
Track Fixtures



Line Voltage GU10
Track Fixtures Lamps

Line Voltage PAR Track Lighting

- Designed for use with GU10 LED and halogen lamps
- Endless options of finishes and designs
- Standard H style connectors, available for J and L style

H-Style Standard
(J & L Style Available)



For use with 120V Single or Two Circuit Tracks

Wide selection of finishes and styles
to match any room design

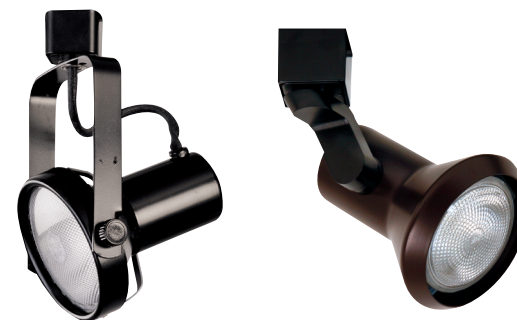
Fixtures accommodates
PAR20, PAR28, PAR30, PAR38

Its timeless design is perfect for traditional
as well as contemporary interiors

Line Voltage 120V PAR Track Fixtures



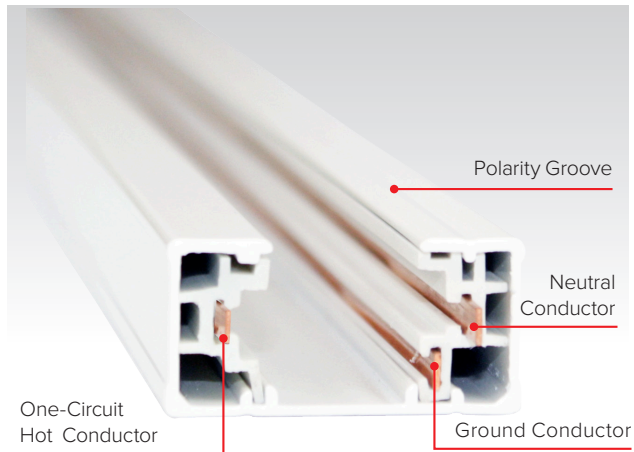
Builder's Track
Kits **Available**



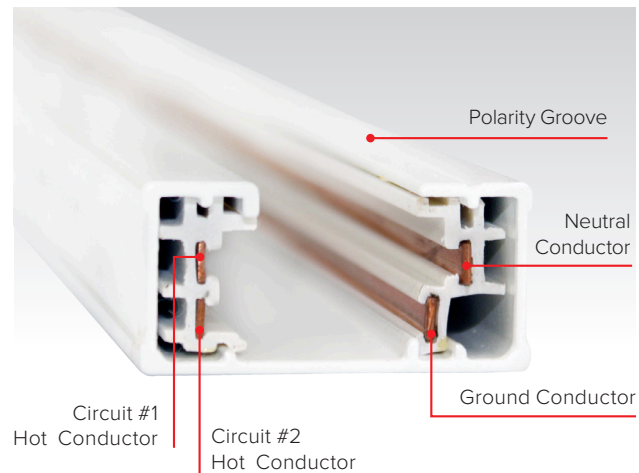
Track & Accessories

- Single and Two-circuit track available
- 2' to 12' track
- All connectors available

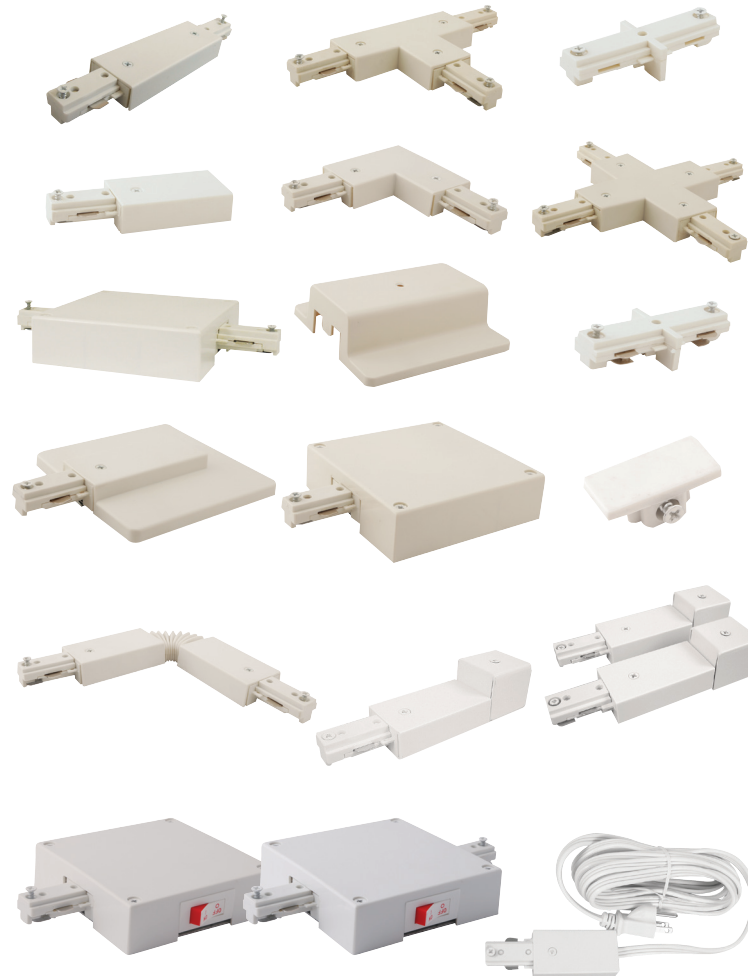
Single Circuit Track



Two Circuit Track



Track Connectors



General Accessories



Pendants

- Variety of color glass and aluminum pendants
- Ranging from 300 to 3000 lumens
- LED Die-Cast pendants include a flat canopy
- LED Glass pendants include a Flat canopy with 5W LED Driver

LED Bait™ (2" x 8") to (4" x 10")



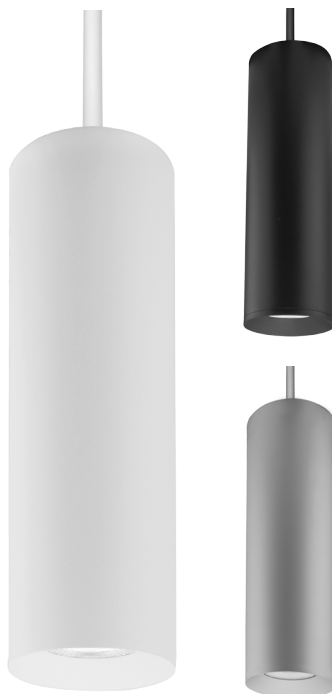
LED Die-Cast
Aluminum
Pendants include
a Flat Canopy



Optional Steel Stems for LED Die-cast Aluminum Pendants



LED 2" Koto Sylo™



Cable is 120" long field cuttable

LED Die-Cast
Aluminum
Pendants include
a Flat Canopy



LED, Line & Low Voltage Glass Pendant



LED Glass
Pendants include
a Flat Canopy with
5W LED Driver



Becket™

Barrel™