

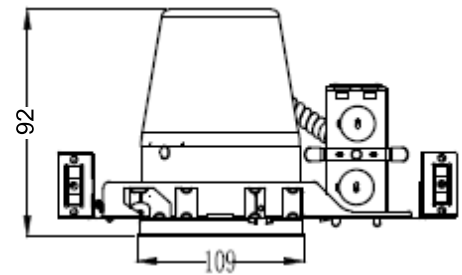
EL14027W EL14030W EL14040W  
EL14127W EL14130W EL14140W

### 4Inch LED Retrofit Trim Series

#### RECESSED HOUSING AND DIMMER COMPATIBILITY

\*The LED Downlight is designed to install in standard 4" recessed downlight housings.

\*Compatibility of housing not on this list may be determined by measurement of the housing as detailed in the attached drawing ( Figure 1)



Minimum distance between  
edge of fixture and top of  
housing or other obstruction.

### IMPORTANT SAFETY INFORMATION

#### Read all instructions before installation

Warning - Risk of Electric Shock. Disconnect power at fuse or circuit Breaker before installing or servicing.

Note: (1) It may be necessary to remove a socket mounting plate for adequate clearance.

(2) Each lampholder shall be installed only in its intended manner and orientation.

(3) Not all existing recessed housings that meet these requirements will be compatible with the LED Downlight.

To ensure compatibility, a test installation should be conducted.

(4) Suitable for wet locations.

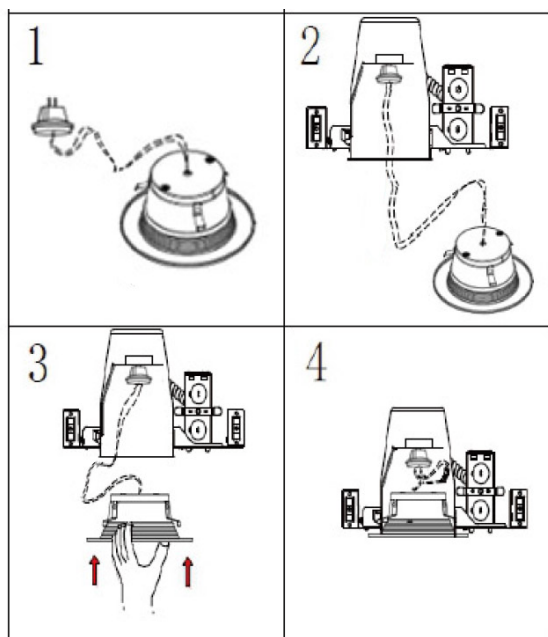
(5) WARNING - Risk of fire or electric shock. LED Retrofit Kit installation requires knowledge of luminaire electrical systems. If not qualified, do not attempt installation. Contact a qualified electrician.

(6) WARNING - Risk of fire or electric shock. Install this kit only in the luminaires that have the construction features and dimensions shown in the photographs and/or drawings.

(7) Do not make or alter any open holes in an enclosure of wiring or electrical components during kit installation.

(8) WARNING - To prevent wiring damage or abrasion, do not expose wiring to edges of sheet metal or other sharp objects.

(9) THIS PRODUCT MUST BE INSTALLED IN ACCORDANCE WITH THE APPLICABLE INSTALLATION CODE BY A PERSON FAMILIAR WITH THE CONSTRUCTION AND OPERATION OF THE PRODUCT AND THE HAZARDS INVOLVED



#### STEP 1:

Remove LED Downlight fixture from the packaging

#### STEP 2:

Make sure the **POWER IS TURNED OFF** at the source to the recessed housing(s) that you are installing the fixture(s) in.

Once power has been turned off, remove existing trim and lampholder, put the LED lampholder into the socket.

#### STEP 3:

Slide LED Downlight with torsion spring in fully-deployed position.

#### STEP 4:

Up into the recessed housing firmly until trim ring is flush with ceiling.