

# ELCO LIGHTING

Form #0196\_07.16

2042 E. VERNON AVE  
VERNON, CA 90058  
sales@elcolighting.com

TEL: (323) 231-2600  
FAX: (323) 231-3200  
www.elcolighting.com

## ***GU10 Base housings In Stock!***

**LINE VOLTAGE FOR GU-10 LED OR HALOGEN LAMPS**



### **3" Double Wall New Construction IC Airtight Housing**

- Lamp: 50W MAX. 120V, MR16, GU10 base.
- EL391CA**



### **3" Single Wall New Construction Airtight Housing**

- Lamp: 50W MAX. 120V, MR16, GU10 base.
- EL39A**

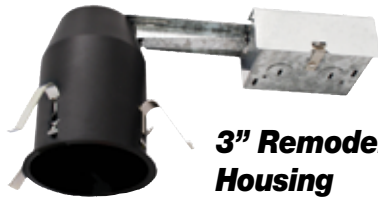
### **3" Single Wall New Construction IC Airtight Housing**

- Lamp: 14W MAX. 120V AC, LED MR16, GU10 base.
- EL39LDICA**



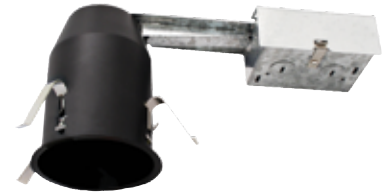
### **3" Single Wall Remodel Airtight Housing**

- Lamp: 50W MAX. 120V, MR16, GU10 base.
- EL39RA**



### **3" Remodel IC Airtight Housing**

- Lamp: 14W MAX. 120V AC, LED MR16, GU10 base.
- EL39LDRICA**



## **New 3" Compatible Trims**



### **Square Shower Trim**

- 4 5/16" Square

**EL2312W** Frosted Lens, White Ring  
**EL2313W** Clear Lens, White Ring



### **Square Pinhole Trim**

- 4 5/16" Square

**EL2319C** Chrome Ref., White Ring



### **Adjustable Slot Aperture Trim**

- 4 5/16" Square

**EL2320W** All White



### **Square Specular Reflector Trim**

- 4 5/16" Square

**EL2321W** All White  
**EL2321C** Chrome Ref., White Ring



### **Square Adjustable Wall Wash Reflector Trim**

- 4 5/16" Square

**EL2322C** Clear Ref., White Ring  
**EL2322B** Black Ref., White Ring



### **Square Adjustable Reflector Trim**

- 4 5/16" Square

**EL2382W** All White  
**EL2382BZ** All Bronze  
**EL2382C** Chrome Ref., White Ring  
**EL2382BB** All Black  
**EL2382CN** Clear Ref., Nickel Ring



### **Die Cast Square Baffle Trim**

- 4 5/16" Square

**EL2384W** All White



### **Square Phenolic Baffle Trim**

- 4 5/16" Square

**EL2393W** All White



### **Square Pull Down Trim**

- 4 5/16" Square

**EL2396W** All White

Please provide your e-mail address to [salesadmin@elcolighting.com](mailto:salesadmin@elcolighting.com)  
To unsubscribe e-mail: [salesadmin@elcolighting.com](mailto:salesadmin@elcolighting.com)  
All other standards, terms and conditions apply.