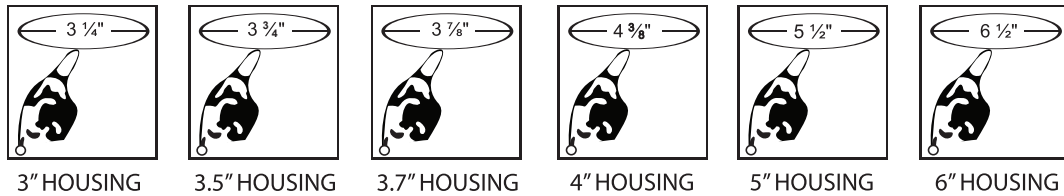




Step 1.

Carefully cut a hole in ceiling as shown below diameter.



Step 2.

Pull supply wire through opening and make electrical connections. Refer to "electrical connections" section.

Step 3.

Insert the housing in ceiling cutout as illustrated.

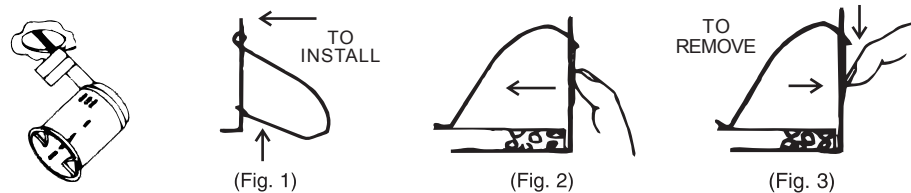
With clips seated properly in can (fig. 1).

Insert remodel housing into ceiling, junction box first.

Hold fixture up against ceiling and push clip through housing slot (fig. 2).

To lock clip in place push flat portion against side of can (fig. 2).

To release pull down on clip (fig. 3).



TRIM INSTALLATION

