

# The **Alder**<sup>TM</sup> System

2" Housing & LED Light Engines



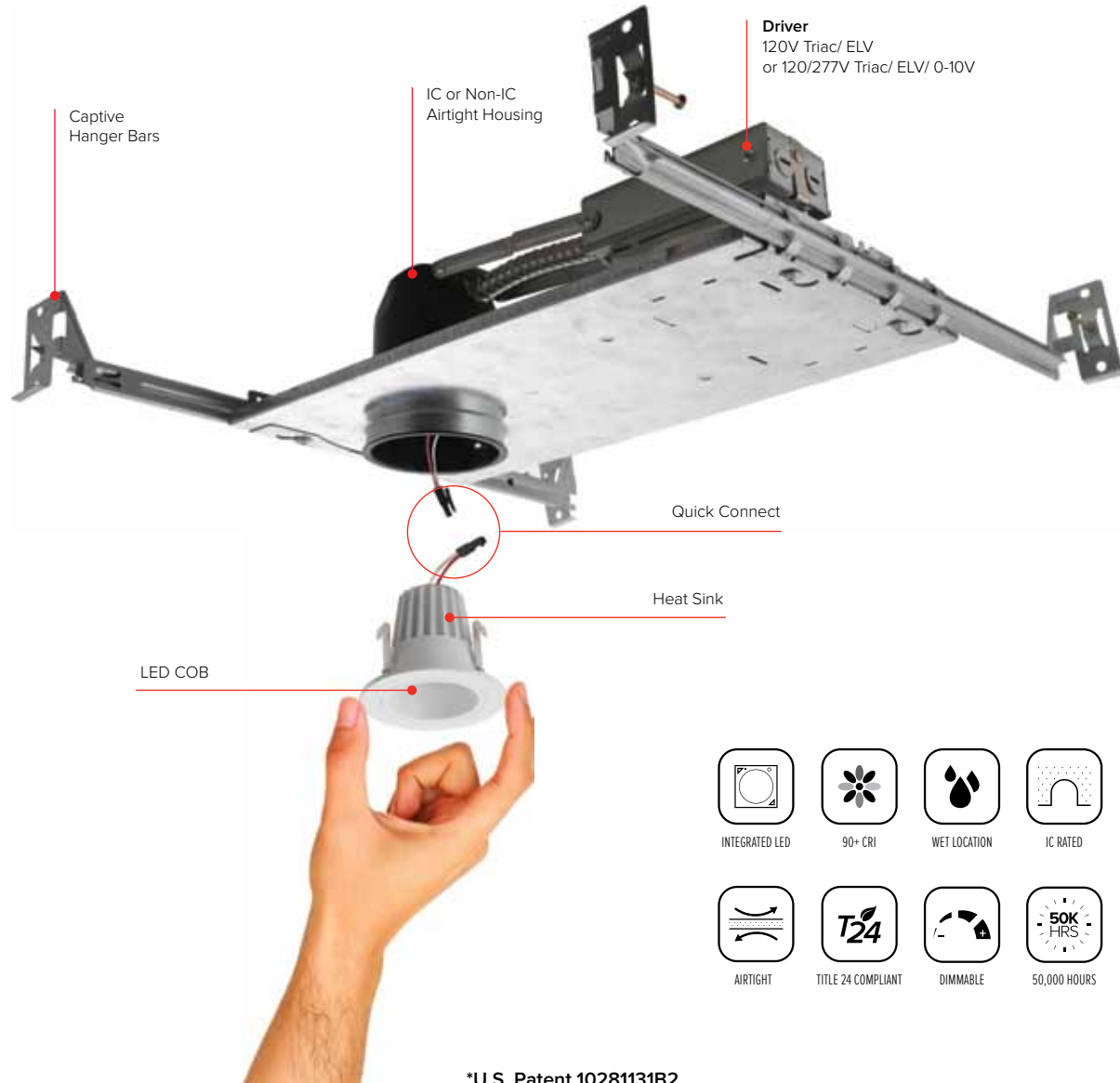
Standard Alder<sup>TM</sup> **LED**

High-Tech Alder<sup>TM</sup> **LED**

## 2" Alder System

Our 2" LED downlights bring a simple charm to any room. Tucked neatly into the ceiling, these round or square fixtures are designed to spotlight an area of the wall, the floor, or anything in between. They are style and sophistication combined with the most energy-efficient technology around, providing long life, cool operation, and vivid illumination.

# The Alder™ System



\*U.S. Patent 10281131B2

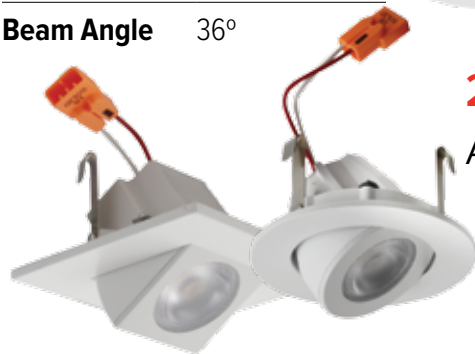
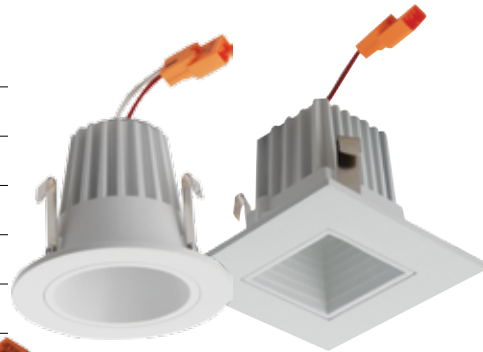
# 2" Alder™ Housings & Light Engines

- The diminutive lighting solution that provides smooth and even lumen distribution
- Small aperture LED light engine with 600 - 1135 lumens of light
- Housing with quick connect for easy light engine installation
- Driver included on housing

- Die-Cast construction provides lasting durability
- Life Span 50,000 Hours L70
- UL Listed for direct contact with insulation
- Meets restricted airflow requirements (per ASTM E-283)
- California Title 24 Compliant as high efficacy luminaire

## 2" Round & Square Reflector 2" Round & Square Baffle

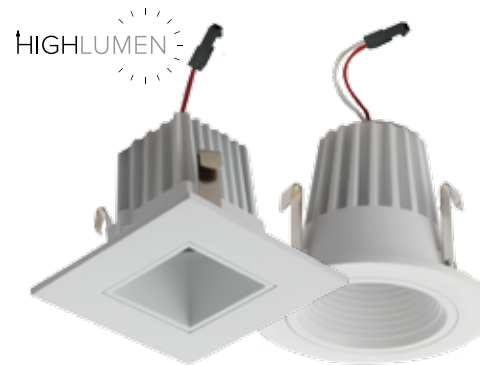
<b>Input Power</b>	9W
<b>Lumens</b>	600 - 840
<b>Color Temp.</b>	2700K - 3000K
<b>CRI</b>	90+
<b>Wet Location</b>	UL listed
<b>Dimmable</b>	Triac/ELV
<b>Beam Angle</b>	36°



## 2" Round & Square Adjustable

## 2" HighTech Round & Square Reflector 2" HighTech Round & Square Baffle

<b>Input Power</b>	11W
<b>Lumens</b>	1000 - 1200
<b>Color Temp.</b>	2700K - 4000K
<b>CRI</b>	90+
<b>Wet Location</b>	UL listed
<b>Dimmable</b>	Triac/ELV/0-10V
<b>Beam Angle</b>	36°



## 2" Round & Square Adjustable



- 2" IC Airtight New Construction Housing for foam insulation
- Available for standard and HighTech
- Double Wall IC rated for use in foam insulated ceilings R60



- New Construction Housing
- Captive hangerbars span 24", can be repositioned at 90°



- Single Wall IC Remodel Housing
- Flexi-joint allows for easy installation and solid supporter

## 2" Alder™ Housings

\*U.S. Patent 10281131B2