

## 4" Slant™ System Sloped Ceiling LED Inserts & Housings

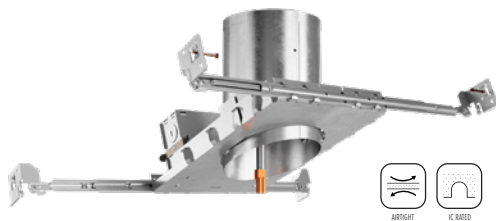


- 2/12  
10°
- 3/12  
14°
- 4/12  
18.5°
- 5/12  
22.5°
- 6/12  
26.5°

The innovative ELCO Slant™ System designed specifically for installation in Vaulted or Sloped Ceilings ranging from 2/12 (10°) to 6/12 (26.5°). The LED light engine allows **full adjustment capability** that can be aimed straight down in accordance with the ceiling pitch.

### 4" Sloped Ceiling IC Airtight Housings

- 14W / 120V
- Allows for direct contact with insulation
- Designed for use in 2/12 to 6/12 sloped ceiling
- Adjusts to accommodate up to 3/4" ceiling thickness
- California Title 24 (JA8-2016-E)



### 4" Sloped New Construction Housing

**EL470ICA** 6 5/8" H - 4 1/4" O.D.



### 4" Sloped Remodel Housing

**EL470RICA** 7 1/2" H - 4 1/4" O.D.

### 4" Round Sloped Ceiling LED Inserts with 5-CCT Switch

- 12.5W / 900 lm
- CCT Switch: 2700K, 3000K, 3500K, 4000K, 5000K
- Integral gimbal for +25° tilt adjustability
- 120V, Triac/ELV dimming
- Compatible with most incandescent and electronic low voltage dimmers
- 6" O.D. - 3 5/8" I.D. - 4 1/8" H



#### 4" Sloped LED Reflector Insert with 5-CCT Switch

**EL425CT5W** All White

**EL425CT5BB** All Black



#### 4" Sloped LED Baffle Insert with 5-CCT Switch

**EL423CT5W** All White

**EL423CT5BZ** All Bronze



Subject to US tariffs. All other standards, terms and conditions apply.  
Please provide your e-mail address to [salesadmin@elcolighting.com](mailto:salesadmin@elcolighting.com). To unsubscribe e-mail: [salesadmin@elcolighting.com](mailto:salesadmin@elcolighting.com)



E-mail your order to: [orderdesk@elcolighting.com](mailto:orderdesk@elcolighting.com)

Tel: 800.522.2626 • Fax: 800.644.2626

**ELCO Lighting**  
The Best Choice in Lighting