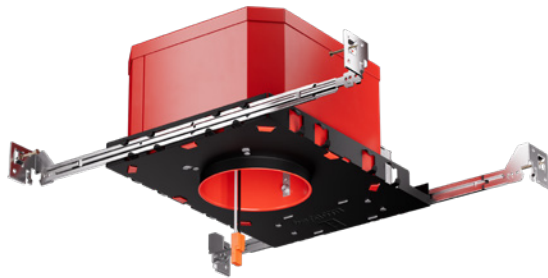


3", 4", 5", & 6"

2-Hr Fire Rated Housing in Stock!

UL listed for **2-hour Fire Resistance** to meet and exceed strict fire safety codes. IC Airtight for direct contact with insulation. Integrated non-combustible insulation enhances acoustical protection, dampening sound transfer between floors. Housing Meets Restricted Air Flow Requirements (per ASTM E-283). Meets Title 24 Requirements.

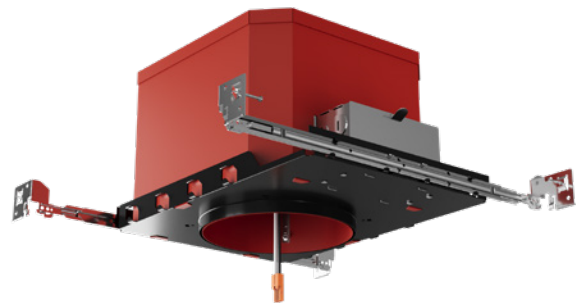


2-Hour Fire Rated Shallow New Construction ICA Housings

- Quick-connect terminal for easy LED Insert installation

EL492FICAS 4" Housing (4 13/16" H - 4 3/8" O.D.)

EL75FICAS 6" Housing (6 3/16" H - 6 1/8" O.D.)



2-Hour Fire Rated Standard New Construction ICA Housings

- Quick-connect terminal for easy LED Insert installation

EL39FICA 3" Housing (7 3/4" H - 3 1/2" O.D.)

EL48FICA 4" Housing (6 7/8" H - 4 1/4" O.D.)

EL56FICA 5" Housing (7 3/4" H - 5 1/2" O.D.)

EL76FICA 6" Housing (7 3/4" H - 6 3/8" O.D.)



Integrated
Non-Combustible
Insulation

2-Hour Fire Rated Medium Base New Construction ICA Housings

- E26 medium base socket for Incandescent or LED Lamps
- For use with ELCO Line Voltage trims

EL99FICA 4" Housing (7 3/4" H - 4 1/4" O.D.)

EL5FICA 5" Housing (7 3/4" H - 5 1/2" O.D.)

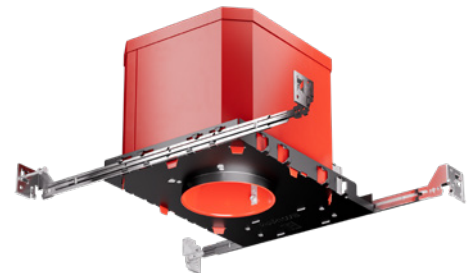
EL7FICA 6" Housing (7 3/4" H - 6 3/8" O.D.)

2-Hour Fire Rated GU10 New Construction ICA Housings

- GU10 base socket for LED or traditional GU10 Lamps

EL39FICA-GU10 3" Housing (7 3/4" H - 3 1/2" O.D.)

EL49FICA-GU10 4" Housing (7 3/4" H - 4 1/4" O.D.)



Subject to US tariffs. All other standards, terms and conditions apply.
Please provide your e-mail address to salesadmin@elcolighting.com. To unsubscribe e-mail: salesadmin@elcolighting.com



E-mail your order to: orderdesk@elcolighting.com

Tel: 800.522.2626 • Fax: 800.644.2626

ELCO Lighting
The Best Choice in Lighting