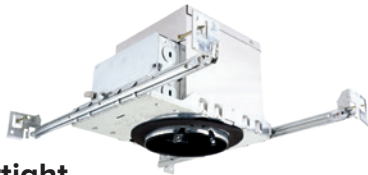


## 4" & 6" Line Voltage ICA Housings & Trims for PAR20 Lamps

### 4" Housings with Adjustable Lamp Holder



#### IC Airtight Double Wall Housing

- Lamp: 50W MAX.
- 120V

EL99ICA



#### E26 Base New Construction Housing

#### Non-IC, For Medium Base Lamps

- 50W MAX., 120V

EL99A

#### IC, Airtight, For LED Lamps

- 12W MAX., 120V

EL99LDICA



#### Medium Base E26 Remodel Housing

#### Non-IC

- 50W MAX., 120V

EL99RA

#### IC Airtight

- 12W MAX., 120V

EL99RICA

Subject to US tariffs. All other standards, terms and conditions apply.

Please provide your e-mail address to salesadmin@elcolighting.com. To unsubscribe e-mail: salesadmin@elcolighting.com

### New 4" Die-Cast Trims

#### Round Reflector



- 5" O.D.

ELL4810W All White  
ELL4810B All Black  
ELL4810BZ All Bronze

#### Round Baffle



- 5" O.D.

ELL4813W All White  
ELL4813BZ All Bronze

#### Round Wet Location Trim



- 5" O.D.

ELL4812W All White  
ELL4812BZ All Bronze

#### Round Wall Wash



- 5" O.D.

ELL4815W All White  
ELL4815B All Black  
ELL4815BZ All Bronze

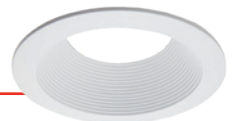
#### Deep Round Reflector



- 5 1/8" O.D.

ELL4817W All White  
ELL4817BZ All Bronze

#### Deep Round Baffle



- 5 1/8" O.D.

ELL4819W All White

#### Square Reflector



- 4 1/2" Sq.
- Not compatible with Remodel Housings

ELL4814W All White  
ELL4814B All Black  
ELL4814BZ All Bronze

#### Square Baffle



- 4 1/2" Sq.
- Not compatible with Remodel Housings

ELL4816W All White  
ELL4816BZ All Bronze

... Check out our full line of 4" Die-Cast Trims at [elcolighting.com](http://elcolighting.com) ...



E-mail your order to: [orderdesk@elcolighting.com](mailto:orderdesk@elcolighting.com)

Tel: 800.522.2626 • Fax: 800.644.2626



**ELCO Lighting**

The Best Choice in Lighting

## 4" & 6" Line Voltage ICA Housings & Trims for PAR20 Lamps

### 6" Housings with Adjustable Lamp Holder



#### IC Airtight Universal Housing

- Lamp: 75W MAX.
- 120V

EL7ICA With Socket Bracket



#### IC Airtight Medium Base E26 Remodel Housing

- Lamp: 75W MAX.
- 120V

EL7RICA With Socket Bracket

### New 6" Die-Cast Trims

#### Round Reflector



- 7 1/2" O.D.

ELL6810W All White  
ELL6810B All Black  
ELL6810BZ All Bronze

#### Round Baffle



- 7 1/2" O.D.

ELL6813W All White  
ELL6813BZ All Bronze

#### Round Wet Location Trim



- 7 1/2" O.D.

ELL6812W All White  
ELL6812BZ All Bronze

#### Round Wall Wash



- 7 1/2" O.D.

ELL6815W All White  
ELL6815B All Black  
ELL6815BZ All Bronze

... FOR PRICING PLEASE CONTACT  
YOUR SALES REPRESENTATIVE OR  
GO TO ELCO PORTAL ...

For our entire selection of compatible **Trims & Lamps**  
please visit us at [elcolighting.com](http://elcolighting.com)

Subject to US tariffs. All other standards, terms and conditions apply.  
Please provide your e-mail address to [salesadmin@elcolighting.com](mailto:salesadmin@elcolighting.com). To unsubscribe e-mail: [salesadmin@elcolighting.com](mailto:salesadmin@elcolighting.com)



E-mail your order to: [orderdesk@elcolighting.com](mailto:orderdesk@elcolighting.com)  
Tel: 800.522.2626 • Fax: 800.644.2626

 **ELCO Lighting**  
The Best Choice in Lighting