

Residential & Light Commercial



2" Housing & LED Light Engines

The Alder System

EL **ELCO Lighting**
The Best Choice in Lighting

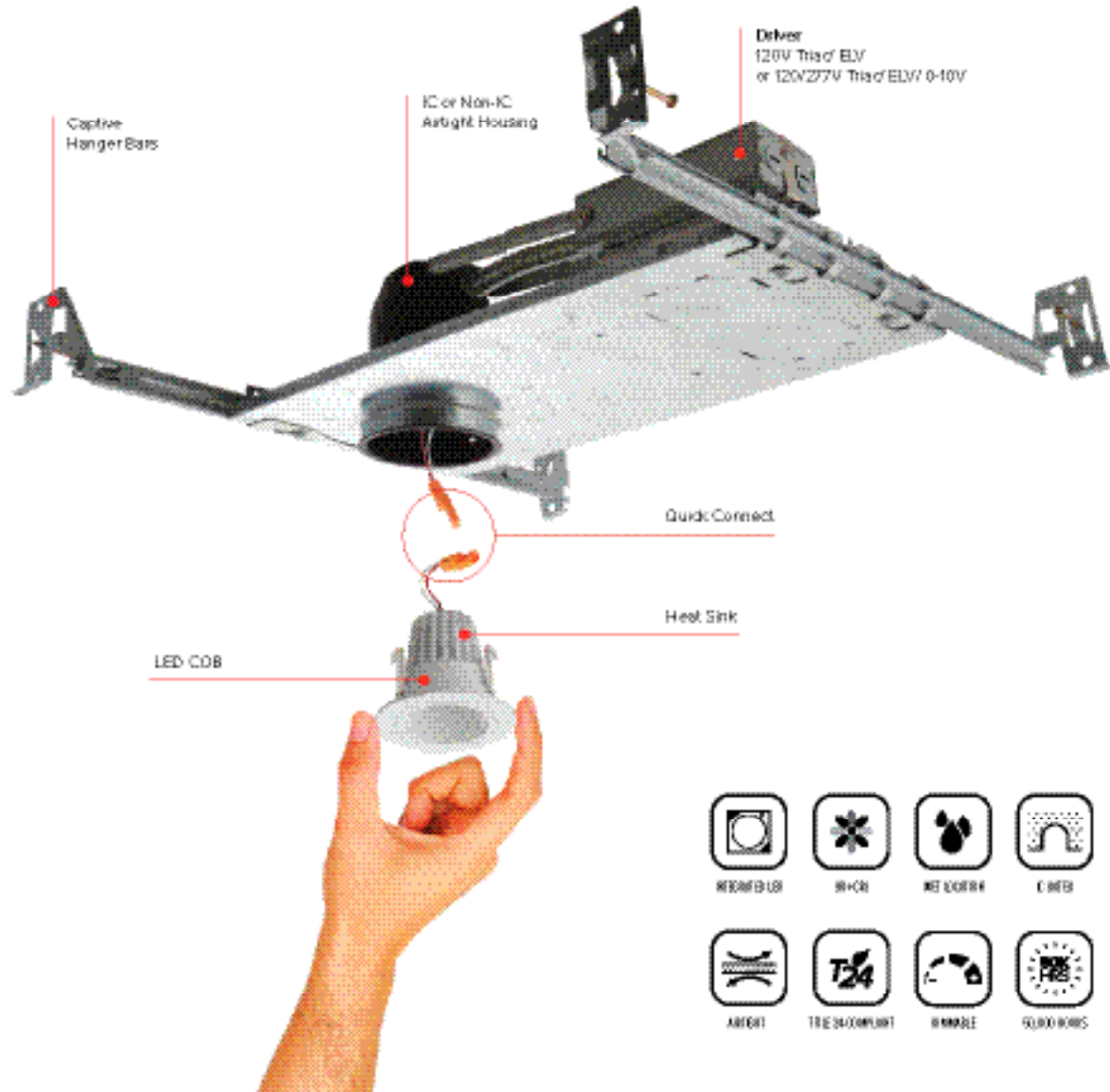


2" Alder System

Our 2" LED downlights bring a simple charm to any room. Tucked neatly into the ceiling, these round or square fixtures are designed to spotlight an area of the wall, the floor, or anything in between. They are style and sophistication combined with the most energy-efficient technology around, providing long life, cool operation, and vivid illumination.

The Alder System

2" Housings & LED Light Engines

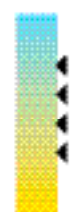
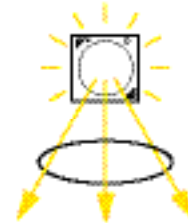


ALDER SYSTEM

STYLES

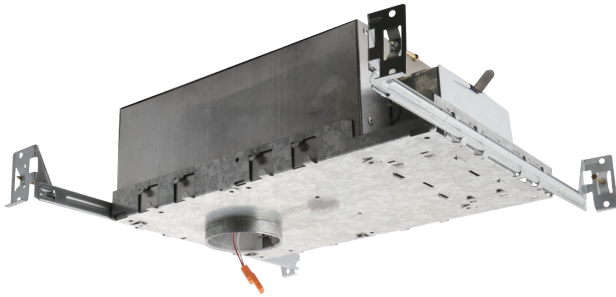
LUMENS

COLOR TEMPERATURE



2" IC Rated Recessed Housings

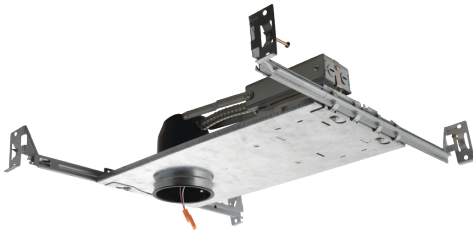
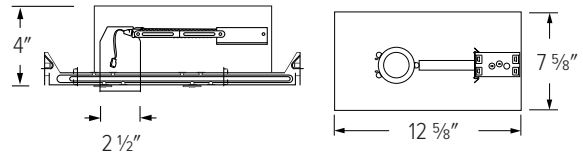
- Housing with quick connect for easy light engine installation
- UL Listed for direct contact with insulation
- Meets restricted airflow requirements (per ASTM E-283)
- Driver included on housing
- California Title 24 Compliant as high efficacy luminaire
- LED Light Engine sold separately
- Patent pending



E2LC106ICA

IC Airtight New Construction Housing

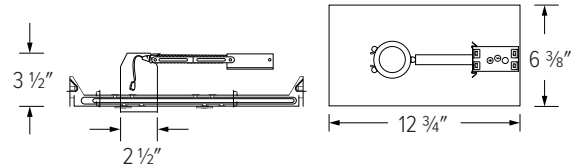
- Double Wall IC rated for use in insulated ceilings
- Captive hangerbars span 24", can be repositioned at 90°
- Height allows for use in 2" x 6" Construction



E2LC175ICA

IC New Construction Housing

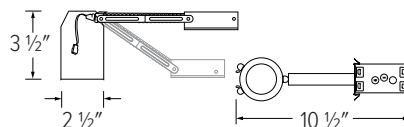
- Single Wall IC
- Height allows for use in 2" x 4" Construction
- Captive hangerbars span 24", can be repositioned at 90°



E2LC175RICA

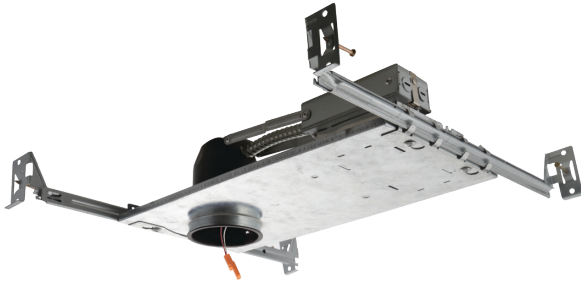
IC Remodel Housing

- Single Wall IC
- Height allows for use in 2" x 4" Construction
- Flexi-joint allows for easy installation and
- solid supporter



2" Non-IC Rated Housings

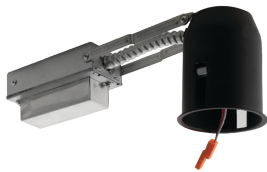
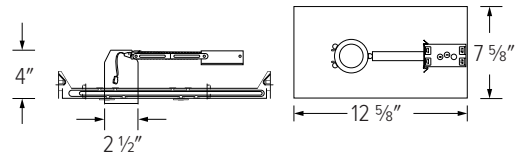
- Housing with quick connect for easy light engine installation
- Meets restricted airflow requirements (per ASTM E-283)
- Height allows for use in 2" x 4" Construction
- Driver included on housing
- California Title 24 Compliant as high efficacy luminaire
- LED Light Engine sold separately



E2LC106

New Construction Housing

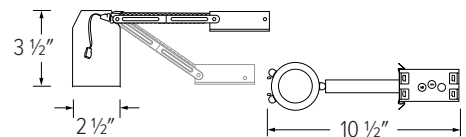
- Captive hangerbars span 24", can be repositioned at 90°



E2LC175ICA

Remodel Housing

- Single Wall IC
- Flexi-joint allows for easy installation and solid supporter



2" Round LED Light Engines

- The diminutive lighting solution that provides smooth and even lumen distribution
- For use with E2LC106ICA, E2LC175ICA, E2LC175RICA, E2LA06, E2LC106, E2LRC106, housings
- Small aperture LED light engine with 600 - 915 lumens of light
- Die-Cast construction provides lasting durability
- Life Span 50,000 Hours L70



E210C0627W

600 lm
2700K
9W

E210C0727W

800 lm
2700K
9W

E210C0630W

640 lm
3000K
9W

E210C0730W

840 lm
3000K
9W

E210C0740W

875 lm
4000K
9W



E214C0627W

600 lm
2700K
9W

E214C0727W

800 lm
2700K
9W

E214C0630W

640 lm
3000K
9W

E214C0730W

840 lm
3000K
9W

E214C0740W

875 lm
4000K
9W



E218C0627W

650 lm
2700K
9W

E218C0727W

850 lm
2700K
9W

E218C0630W

680 lm
3000K
9W

E218C0730W

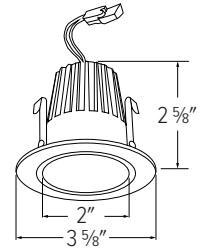
880 lm
3000K
9W

E218C0740W

915 lm
4000K
9W

2" Round Reflector

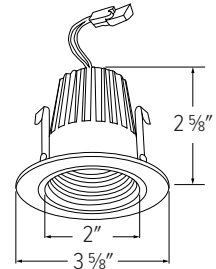
Input Power	9W
Lumens	600 - 875
Color Temp.	2700K - 4000K
CRI	93+
Wet Location	UL Listed
Dimmable	Triac/ELV
Beam Angle	36°



2" Round Baffle

- Baffle reduces stray light

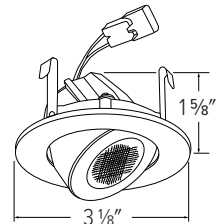
Input Power	9W
Lumens	600 - 875
Color Temp.	2700K - 4000K
CRI	93+
Wet Location	UL Listed
Dimmable	Triac/ELV
Beam Angle	36°



2" Round Adjustable

- 25° adjustability
- *All Lumens are nominal within 7% of allowable tolerance

Input Power	9W
Lumens	650 - 915
Color Temp.	2700K - 4000K
CRI	93+
Wet Location	UL Listed
Dimmable	Triac/ELV
Beam Angle	36°



2" Square LED Light Engines

- The diminutive lighting solution that provides smooth and even lumen distribution
- For use with E2LC106ICA, E2LC175ICA, E2LC175RICA, E2LA06, E2LC106, E2LRC106, housings
- Small aperture LED light engine with 600 - 915 lumens of light
- Die-Cast construction provides lasting durability
- Life Span 50,000 Hours L70



E213C0627W

600 lm
2700K
9W

E213C0727W

800 lm
2700K
9W

E213C0630W

630 lm
3000K
9W

E213C0730W

830 lm
3000K
9W

E213C0740W

860 lm
4000K
9W



E215C0627W

600 lm
2700K
9W

E215C0727W

800 lm
2700K
9W

E215C0630W

630 lm
3000K
9W

E215C0730W

830 lm
3000K
9W

E215C0740W

860 lm
4000K
9W



E219C0627W

650 lm
2700K
9W

E219C0727W

850 lm
2700K
9W

E219C0630W

680 lm
3000K
9W

E219C0730W

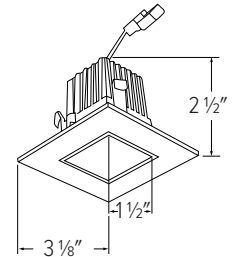
880 lm
3000K
9W

E219C0740W

915 lm
4000K
9W

2" Square Reflector

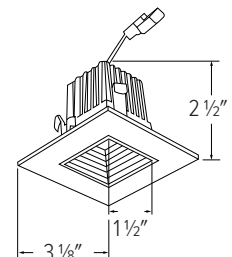
Input Power	9W
Lumens	600 - 860
Color Temp.	2700K - 4000K
CRI	93+
Wet Location	UL Listed
Dimmable	Triac/ELV
Beam Angle	36°



2" Square Baffle

- Baffle reduces stray light

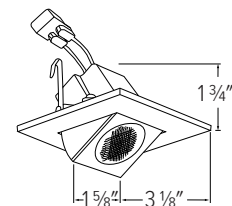
Input Power	9W
Lumens	600 - 860
Color Temp.	2700K - 4000K
CRI	93+
Wet Location	UL Listed
Dimmable	Triac/ELV
Beam Angle	36°



2" Square Adjustable

- 25° adjustability

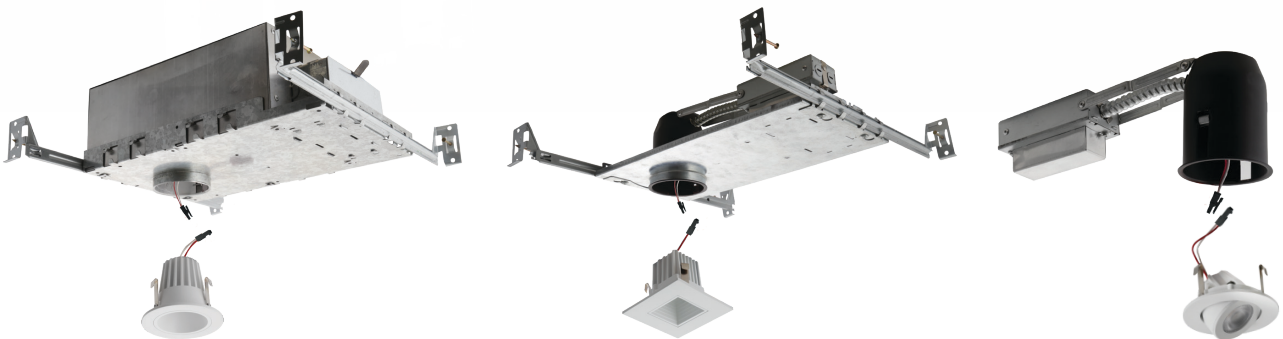
Input Power	9W
Lumens	650 - 915
Color Temp.	2700K - 4000K
CRI	93+
Wet Location	UL Listed
Dimmable	Triac/ELV
Beam Angle	36°



2"

HIGHTECH Housings
+
HIGHLUMEN Modules

ELCO's HighTech Housings and HighLumen 2" Alder System Modules are the brightest addition to our 2" Alder family. The Housings allow for 3-in-1 dimming, Triac, ELV, and 0-10V in both 120V and 277V applications (120/277V). The HighLumen Modules emit more than 1000 lumens of light, and are offered in 2700K, 3000K, 3500K and 4000K to fit any need.

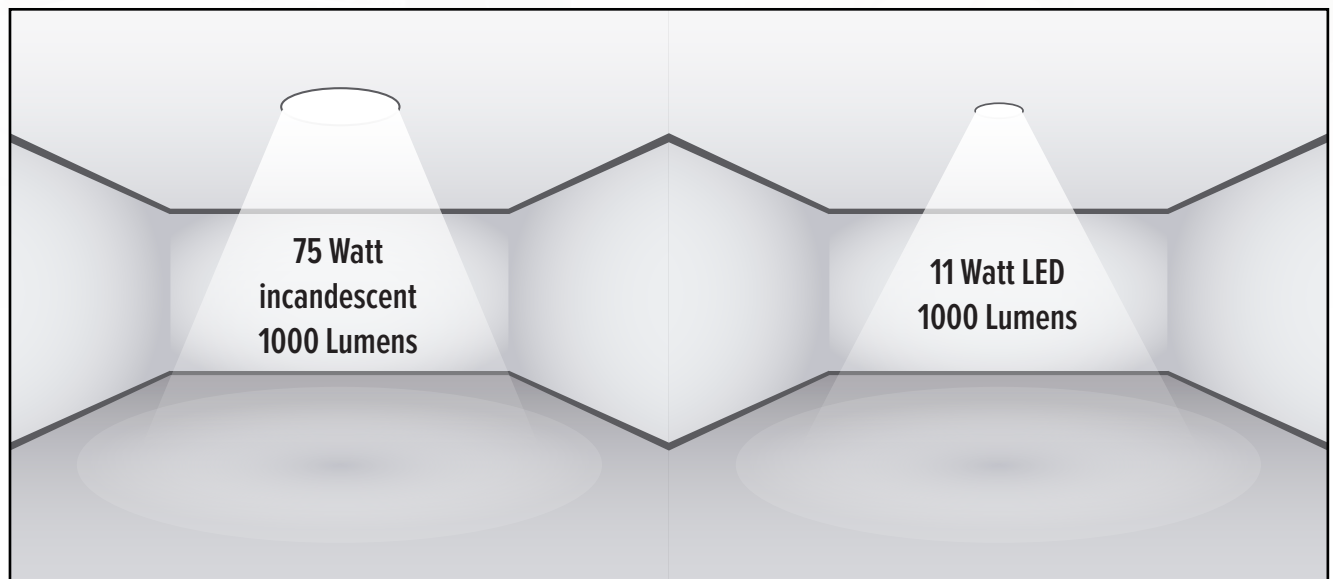




Small Aperture, **Strong Punch.**

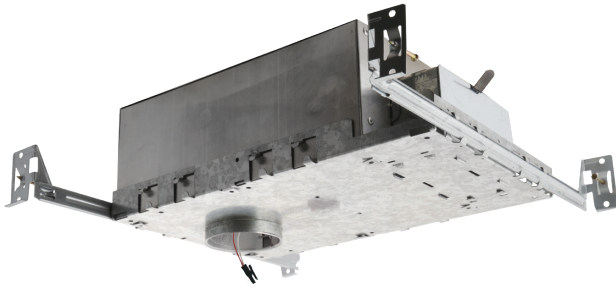
Traditional 6" Downlight
1000 Lumens

ELCO ALDER System 2" LED
1000 Lumens



2" IC Rated **HIGHTECH** Recessed Housings

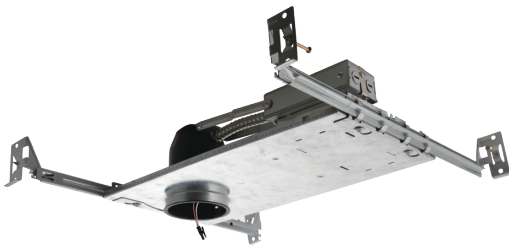
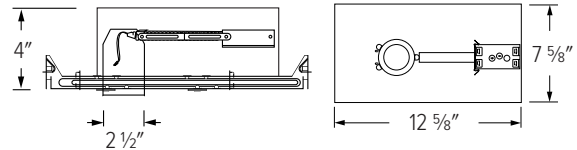
- Housing with quick connect for easy light engine installation
- UL Listed for direct contact with insulation
- 3 in 1 Dimming, 120-277V, Triac (120V only), ELV 0-10V
- Meets restricted airflow requirements (per ASTM E-283)
- Driver included on housing
- California Title 24 Compliant as high efficacy luminaire
- LED Light Engine sold separately
- Patent pending



E2AJU12ICA

IC Airtight New Construction Housing

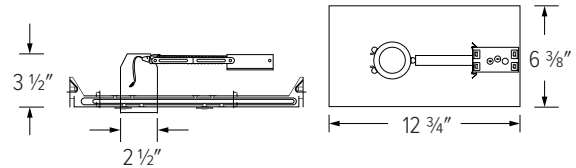
- For foam insulation
- Double Wall IC rated for use in foam insulated ceilings R60
- Captive hangerbars span 24", can be repositioned at 90°
- Height allows for use in 2" x 6" Construction



E2LCU86ICA

IC New Construction Housing

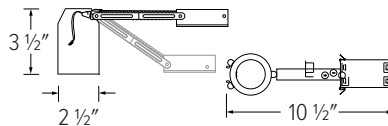
- Single Wall IC
- Height allows for use in 2" x 4" Construction
- Captive hangerbars span 24", can be repositioned at 90°



E2LCU86RICA

IC Remodel Housing

- Single Wall IC
- Height allows for use in 2" x 4" Construction
- Flexi-joint allows for easy installation and
- solid supporter



2" Round **HighLumen** LED Light Engines

- The diminutive lighting solution that provides smooth and even lumen distribution
- For use with High Tech housings E2AJU12ICA, E2LCU86ICA, E2LCU86RICA
- Small aperture LED light engine with 800 - 1135 lumens of light
- Die-Cast construction provides lasting durability
- Life Span 50,000 Hours L70



E210C1827W

1000 lm
2700K
11W

E210C1830W

1050 lm
3000K
11W

E210C1835W

1100 lm
3500K
11W

E210C1827W

1135 lm
4000K
11W

E210C18SDW

800 lm
Sunset
11W



E214C1827W

1000 lm
2700K
11W

E214C1830W

1050 lm
3000K
11W

E214C1835W

1100 lm
3500K
11W

E214C1840W

1135 lm
4000K
11W

E214C18SDW

800 lm
Sunset
11W



E218C1827W

1030 lm
2700K
11W

E218C1830W

1090 lm
3000K
11W

E218C1835W

1140 lm
4000K
11W

E218C1840W

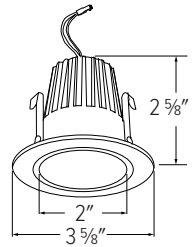
1190 lm
4000K
11W

E218C18SDW

800 lm
Sunset
11W

2" Round Reflector

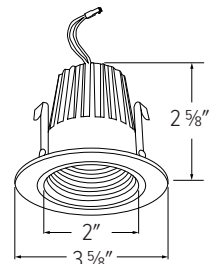
Input Power	11W
Lumens	800 - 1135
Color Temp.	2700K - 4000K
CRI	93+
Wet Location	UL Listed
Dimmable	Triac/ELV
Beam Angle	36°



2" Round Baffle

- Baffle reduces stray light

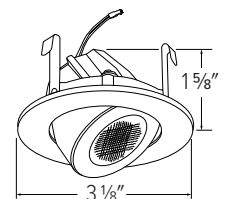
Input Power	11W
Lumens	800 - 1135
Color Temp.	2700K - 4000K
CRI	93+
Wet Location	UL Listed
Dimmable	Triac/ELV
Beam Angle	36°



2" Round Adjustable

- 25° adjustability

Input Power	9W
Lumens	1030 - 915
Color Temp.	2700K - 4000K
CRI	93+
Wet Location	UL Listed
Dimmable	Triac/ELV
Beam Angle	36°



2" Square **HighLumen** LED Light Engines



E213C1827W 1000 lm 2700K 11W	E213C1830W 1040 lm 3000K 11W	E213C1835W 1100 lm 3500K 11W
E213C1840W 1125 lm 4000K 11W	E213C18SDW 800 lm Sunset 11W	



E215C1827W 1000 lm 2700K 11W	E215C1830W 1040 lm 3000K 11W	E215C1835W 1100 lm 3500K 11W
E215C1840W 1125 lm 4000K 11W	E215C18SDW 800 lm Sunset 11W	

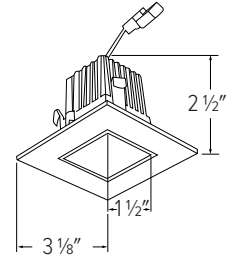


E219C1827W 1030 lm 2700K 11W	E219C1830W 1090 lm 3000K 11W	E219C1835W 1140 lm 3500K 11W
E219C1840W 1190 lm 4000K 11W	E219C18SDW 800 lm Sunset 11W	

- The diminutive lighting solution that provides smooth and even lumen distribution
- For use with High Tech housings E2AJU12ICA, E2LCU86ICA, E2LCU86RICA
- Small aperture LED light engine with 800 - 1190 lumens of light
- Die-Cast construction provides lasting durability
- Life Span 50,000 Hours L70

2" Square Reflector

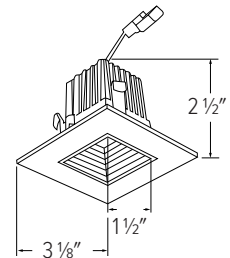
Input Power	9W
Lumens	800 - 1125
Color Temp.	2700K - 4000K
CRI	93+
Wet Location	UL Listed
Dimmable	Triac/ELV
Beam Angle	36°



2" Square Baffle

- Baffle reduces stray light

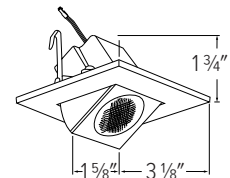
Input Power	11W
Lumens	800 - 1125
Color Temp.	2700K - 4000K
CRI	93+
Wet Location	UL Listed
Dimmable	Triac/ELV
Beam Angle	36°



2" Square Adjustable

- 25° adjustability
- *All Lumens are nominal within 7% of allowable tolerance

Input Power	11W
Lumens	800 - 1190
Color Temp.	2700K - 4000K
CRI	93+
Wet Location	UL Listed
Dimmable	Triac/ELV
Beam Angle	36°



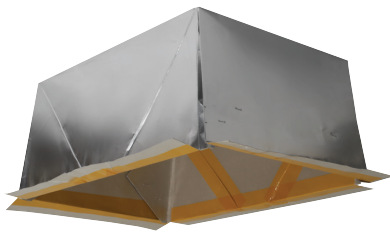
Accessories



FIRECVR

Fire Cover

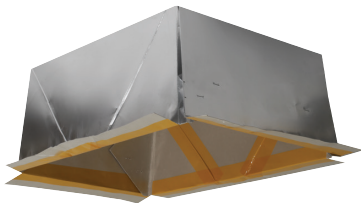
Recessed fire cover stops flame spread and heat transmission for up to 2 hours. UL rated. UL approved for most major ceiling types. Made of heat activated intumescent material. Measures 9 3/4" H x 17" O.D.



FIREENCL

Fire Enclosure

Flexible mica fire enclosure for recessed fixtures. ETL approved for 1-Hour fire resistance. Easy to install. To be used with Mica Fire Tape (sold separately) to seal the power feeding points. Meets the specifications of UL 263, ASTH E119. Bottom Opening: 20 3/8" L x 14 3/8" W - Top Measurement: 19 3/8" L x 13 3/8" W - Height: 9"



FIREENCL-S

Small Fire Enclosure

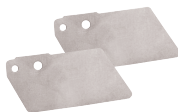
Flexible mica fire enclosure for recessed fixtures. ETL approved for 1-Hour fire resistance. Easy to install. To be used with Mica Fire Tape (sold separately) to seal the power feeding points. Meets the specifications of UL 263, ASTH E119. Bottom Opening: 16" L x 14 3/8" W - Top Measurement: 15" L x 13 3/8" W - Height: 7 1/4"



FIRETAPE

Mica Fire Tape

Fire proof mica adhesive tape helps seal the power feeding point on Fire Enclosure (FIREENCL). Offers outstanding high temperature and flame resistance, and provides excellent electrical insulating. Measures 3/4" W x 16 1/4" L



CLIP2LD

Blade Clip

Set of two blade clips for 2" LED light engines. For optical installation.



KEM-LD3

(8W, Up to 750 lm Emergency Output)

KEM-LD4

(12W, Up to 1100 lm Emergency Output)

Emergency Battery Backup (Double Whip)

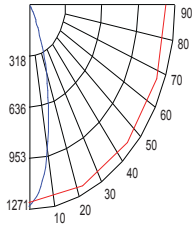
Emergency battery backup. 90 minutes of emergency light. 120V/277V AC, 60Hz.

Alder Photometrics

LED Light Engine Round Baffle Trim CCT Multiplier: 27K = 0.97; 30K = 1

PHOTOMETRIC REPORT

Product #: E214C0627
 Wattage/Lumens: 8.96W / 600.4 lm
 Luminaire LPW: 67 lm/W



CANDLEPOWER SUMMARY

Degrees Vertical	0°
0	1240
5	1128
15	643
25	242
35	58
45	16
55	12
65	7
75	3
85	0
90	0

ILLUMINANCE AT A DISTANCE

Distance to Target Plane	Footcandles Beam Center	Beam Diameter
4'	77.5	2.7'
6'	34.4	4'
8'	19.4	5.4'
10'	12.4	6.7'

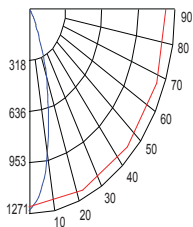
ZONAL LUMEN SUMMARY

Zone	Lumens	%Luminaire
0-30°	491.2	82.4%
0-40°	555.1	93.1%
0-60°	583.2	97.8%
0-90°	595.7	100%

LED Light Engine Round Reflector Trim CCT Multiplier: 27K = 0.97; 30K = 1

PHOTOMETRIC REPORT

Product #: E210C0627
 Wattage/Lumens: 8.96W / 600.4 lm
 Luminaire LPW: 67 lm/W



CANDLEPOWER SUMMARY

Degrees Vertical	0°
0	1240
5	1128
15	643
25	242
35	58
45	16
55	12
65	7
75	3
85	0
90	0

ILLUMINANCE AT A DISTANCE

Distance to Target Plane	Footcandles Beam Center	Beam Diameter
4'	77.5	2.7'
6'	34.4	4'
8'	19.4	5.4'
10'	12.4	6.7'

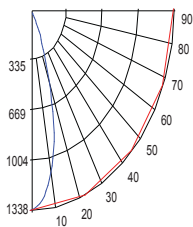
ZONAL LUMEN SUMMARY

Zone	Lumens	%Luminaire
0-30°	491.2	82.4%
0-40°	555.1	93.1%
0-60°	583.2	97.8%
0-90°	595.7	100%

LED Light Engine Square Baffle Trim CCT Multiplier: 27K = 0.97; 30K = 1

PHOTOMETRIC REPORT

Product #: E215C0627
 Wattage/Lumens: 8.84W / 628 lm
 Luminaire LPW: 71 lm/W



CANDLEPOWER SUMMARY

Degrees Vertical	0°
0	1330
5	1266
15	1098
25	846
35	38
45	22
55	18
65	12
75	7
85	2
90	0

ILLUMINANCE AT A DISTANCE

Distance to Target Plane	Footcandles Beam Center	Beam Diameter
4'	83.1	2.6'
6'	36.9	3.8'
8'	20.8	5.1'
10'	13.3	6.4'

ZONAL LUMEN SUMMARY

Zone	Lumens	%Luminaire
0-30°	489.2	82.8%
0-40°	533.8	90.4%
0-60°	568.1	96.2%
0-90°	589.8	100%

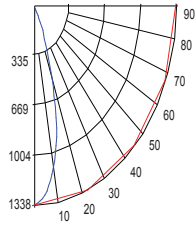
Alder Photometrics

LED Light Engine Square Reflector Trim

CCT Multiplier: 27K = 0.97; 30K = 1

PHOTOMETRIC REPORT

Product #: E213C0627
Wattage/Lumens: 8.84W / 628.02 lm
Luminaire LPW: 71 lm/W



CANDLEPOWER SUMMARY

Degrees Vertical	0°
0	1330
5	1266
15	1098
25	846
35	38
45	22
55	18
65	12
75	7
85	2
90	0

ILLUMINANCE AT A DISTANCE

Distance to Target Plane	Footcandles Beam Center	Beam Diameter
4'	83.1	2.6'
6'	36.9	3.8'
8'	20.8	5.1'
10'	13.3	6.4'

ZONAL LUMEN SUMMARY

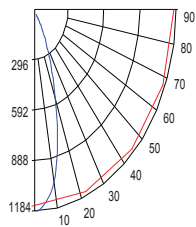
Zone	Lumens	%Luminaire
0-30°	489.2	82.8%
0-40°	533.8	90.4%
0-60°	568.1	96.2%
0-90°	589.8	100%

LED Light Engine Round Adjustable Trim

CCT Multiplier: 27K = 0.97; 30K = 1

PHOTOMETRIC REPORT

Product #: E218C0630
Wattage/Lumens: 9W / 630 Lm
Luminaire LPW: 70 Lm/W



CANDLEPOWER SUMMARY

Degrees Vertical	0°
0	1182
5	1131
15	791
25	378
35	149
45	52
55	22
65	10
75	4
85	1
90	0

ILLUMINANCE AT A DISTANCE

Distance to Target Plane	Footcandles Beam Center	Beam Diameter
4'	73.9	2.6'
6'	34.9	4.0'
8'	18.5	5.3'
10'	11.8	6.6'

ZONAL LUMEN SUMMARY

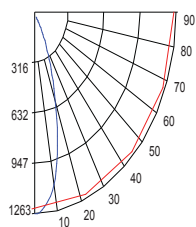
Zone	Lumens	%Luminaire
0-30°	512.4	73.2%
0-40°	613.9	87.8%
0-60°	682.6	97.6%
0-90°	698.7	100%

LED Light Engine Square Adjustable Trim

CCT Multiplier: 27K = 0.97; 30K = 1

PHOTOMETRIC REPORT

Product #: E219C0627
Wattage/Lumens: 8.72W / 662.49 lm
Luminaire LPW: 76 lm/W



CANDLEPOWER SUMMARY

Degrees Vertical	0°
0	1255
5	1202
15	806
25	354
35	142
45	49
55	20
65	10
75	4
85	1
90	0

ILLUMINANCE AT A DISTANCE

Distance to Target Plane	Footcandles Beam Center	Beam Diameter
4'	78.5	2.6'
6'	34.9	4.0'
8'	19.6	5.3'
10'	12.6	6.6'

ZONAL LUMEN SUMMARY

Zone	Lumens	%Luminaire
0-30°	496.2	74.9%
0-40°	588.0	88.7%
0-60°	646.0	97.4%
0-90°	662.2	100%

ELCAT1049



Corporate Headquarters

2042 E. Vernon Ave.
Vernon, CA 90058
Tel: 323.231.2600
Fax: 323.231.3200
elcolighting.com

Customer Service

Tel: 800.522.2626
Fax: 800.644.2626
orderdesk@elcolighting.com
customerservice@elcolighting.com
sales@elcolighting.com

Printed in the U.S.A. 1/19
\$15.00

© ELCO Lighting. The marks appearing in this catalog are registered trademarks of ELCO Lighting. Other marks used herein are recognized trademarks of their respective companies. Products shown in this brochure may be covered by U.S. and international patents. Specifications subject to change without notice.