

INSTALLATION INSTRUCTIONS

4 in LED DOWNLIGHT - MODEL EL475CT5XX

Rated Voltage 120V-277V, 60Hz

XX indicates the finish color of product.

Please read carefully and save these instructions as you may need them at a later date.

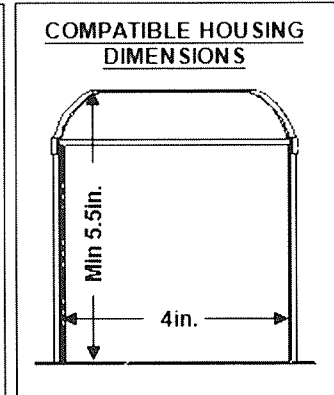
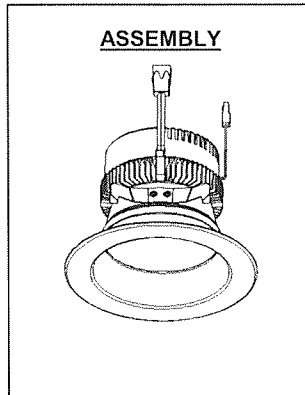
WARNING - RISK OF ELECTRIC SHOCK. DISCONNECT MAIN POWER AT FUSE OR CIRCUIT BREAKER BEFORE INSTALLING OR SERVICING THE FIXTURE.

GENERAL: All electrical connections must be in accordance with local and National Electrical Code (N.E.C.) standards. If you are unfamiliar with proper electrical wiring connections obtain the services of a qualified electrician.

Remove the KIT from the box and make sure that no parts are missing by referencing the PARTS illustrations.

THIS RETROFIT ASSEMBLY IS ACCEPTED AS A COMPONENT OF A LED LUMINAIRE WHERE THE SUITABILITY OF THE COMBINATION SHALL BE DETERMINED BY CSA OR CANADIAN AUTHORITIES HAVING JURISDICTION.

THIS DEVICE IS NOT INTENDED FOR USE WITH EMERGENCY EXITS.



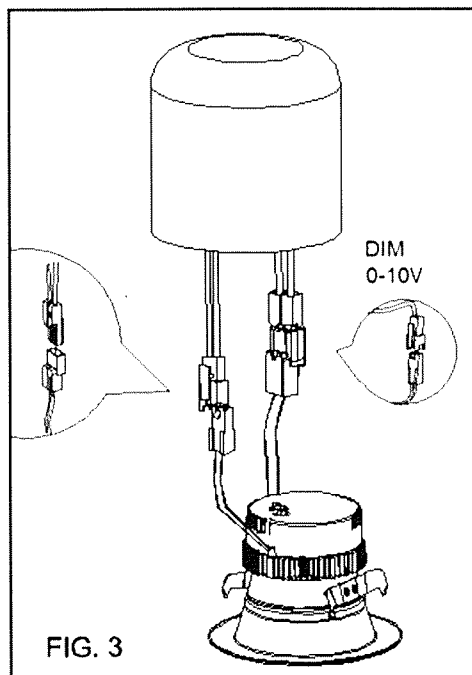
WARNING- RISK OF FIRE OR ELECTRIC SHOCK

- LED Insert installation requires knowledge of luminaires electrical systems. If not qualified, do not attempt installation. Contact a qualified electrician.
- Install this kit only in luminaires that have the construction features and dimensions shown in the photographs and/or drawings and where the input rating of the retrofit kit does not exceed the input rating of the luminaire.
- Do not make or alter any open holes in an enclosure of wiring or electrical components during kit installation.
- To prevent wiring damage or abrasion, do not expose wiring to edges of sheet metal or other sharp objects.
- The inside of the ceiling must be waterproof.

ASSEMBLY AND INSTALLATION

Dedicated LED Housing

1. Mate the **FEMALE ORANGE CONNECTOR** of the LED Insert onto the **MALE ORANGE CONNECTOR** of the LED HOUSING. (FIG. 3)
2. For 0-10V Control wires, mate the **FEMALE BLACK MINI CONNECTOR** of the LED Insert onto the **MALE BLACK MINI CONNECTOR** of the LED HOUSING
3. Squeeze both **FRICTION BLADES** arms together and insert into the CAN. Tuck all wires into the CAN and carefully push the **RETROFIT KIT** into CAN.



DIMMING

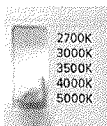
Dimming performance may depend on the dimmer, the dimmer range adjustment setting (for dimmers with brightness range adjustments), the wiring method, and/or the number of LED modules installed onto the dimmer circuit.

- For dimmer selection, it is recommended to use one of the following 0-10V dimmers.
- *PHILIPS – SR1200ZTUNV*
LUTRON – DVSTV-WH, NTSTV-DV-WH
- For best results, it is recommended to install a minimum of four LED modules onto one dimmer.
- Before turning on the LED lights, set dimmer position at maximum before adjusting to a lower light level.
- Please follow the dimming control manufacturer's instructions for the installation of all dimming controls.

EASY INSTALLATION

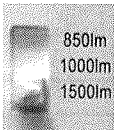
1. Thread the SOCKET ADAPTER into the CAN

2.



Before Installation, select Color of Light With Integrated Switch.

3.



Before Installation, select Lumen of Light with driver Switch 1000lm, 1500lm or 2000lm as you want .

4. Plug the MALE CONNECTOR of the SOCKET ADAPTER to the FEMALE CONNECTOR of top of the Ply™ LED Insert.
5. Tuck all wires into the CAN and carefully push the Ply™ LED Insert into CAN.

FIVE-YEAR LIMITED WARRANTY

ELCO lighting @ warrants this product to be free from defects in material and workmanship for five years from the original date of purchase by the consumer. This warranty is limited to the counter replacement at the time of purchase, with the original purchase receipt. **ELCO lighting** @ will not be liable for the loss or damage of any kind, incidental or consequential damages of any kind, whether based on warranty contract or negligence, and arising in connection with the sale, use or repair of the product claimed to be defective. Some states do not allow the exclusion or limitation of incidental or consequential damages so the above limitation may not apply to you. This warranty gives you specific legal rights and you may also have other rights, which vary from state to state. Misuse, accident, improper installation or maintenance will also void the warranty.

If any questions, please feel free contact ELCO Lighting, address: 2042 East Vernon Avenue Vernon, California 90058, USA

This device complies with part 15 of the FCC Rules. Operation is subject to the following two conditions: 1.

This device may not cause harmful interference, and

2. This device must accept any interference received, including interference that may cause undesired operation.

NOTE: This equipment has been tested and pursuant to Part 15 of the FCC Rules. These limits are designed to provide reasonable protection against harmful interference in a residential installation. This equipment generates, uses and can radiate radio frequency energy and, if not installed and used in accordance with the instructions, may cause harmful interference to radio communications. However, there is no guarantee that interference will not occur in a particular installation. If this equipment does cause harmful interference to radio or television reception, which can be determined by turning the equipment off and on, the user is encouraged to try to correct the interference by one or more of the following measures:

- Reorient or relocate the receiver antenna.
- Increase the separation between the equipment and receiver.
- Install the product onto on a circuit different from that to which the receiver is connected.
- Consult with the dealer or an experienced radio/TV technician for help.

CAUTION: Any changes made to the electronics circuit will void this equipment's compliance with Part 15 of the FCC Rules and should not be operated.