

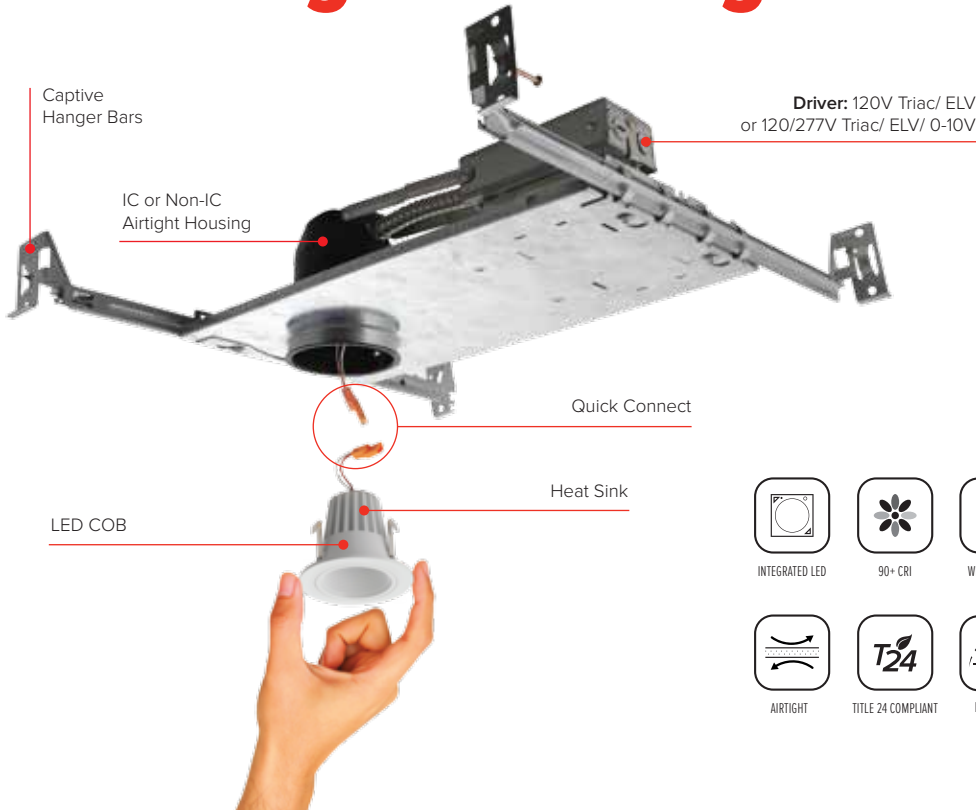
ELCO Lighting presents the **NEW**

See Catalog
ELCAT1049

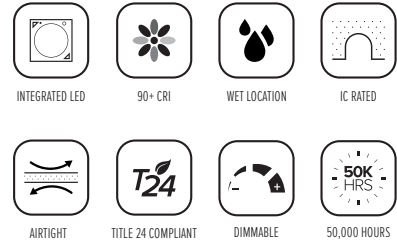


The Alder System

2" Housings & LED Light Engines



Driver: 120V Triac/ ELV
or 120/277V Triac/ ELV/ 0-10V



ALDER SYSTEM

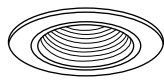
STYLES

LUMENS

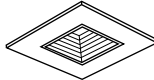
COLOR TEMPERATURE



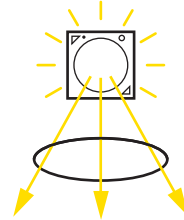
(1000 lm - 1200 lm)



Round



Square



600 lm to 1200 lm



2700K & 4000K



(600 lm - 880 lm)



Round Adjustable



Square Adjustable

Check out our full line of Catalogs at elcolighting.com



1 & 2-Hour Fire Rated Housing & Products



The Alder System



The Cedar System



LED Brick Lights & LED Step Lights



LED Undercabinet



Track Fixtures Brochure



The Elm System



The Laurel System



LED Housings & Inserts



Slope Ceiling Recessed Fixtures



ELCO Lighting
The Best Choice in Lighting

2042 E. Vernon Ave.
Vernon, CA 90058
Tel. 323.231.2600
elcolighting.com