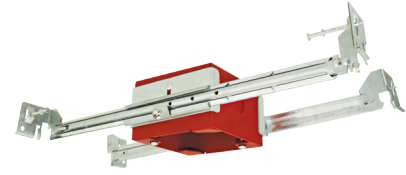


Square New Construction Box

Maximum 2-Hour Fire Rated ceiling assembly can be maintained when installed according to the International Building Code, Section 714.



Features

- The ideal solution for ceiling mount fixtures
- Standard 3 1/2" spaced mounting holes
- Height adjustable bracket for flush alignment even after mounting
- IC Airtight for direct contact with insulation, for use in IC and Non-IC applications
- No need to construct a fire rated box
- Swivel hanger bars for new construction mounting
- Low profile makes ideal in shallow plenum applications
- cUL listed under cUL 514A Standards as a metallic outlet box
- Maximum 2-Hour Fire Rated ceiling assembly can be maintained when installed according to the International Building Code, Section 714

Technical Details

Installation:

- Designed for shallow ceiling plenums.
- High strength swivel hanger bars that can be nailed to joists.
- Height adjustable bracket for flush alignment even after mounting

Junction Box: Positioned to accommodate straight conduit runs. Four 1/2" trade size conduit knockouts (2 on each side, 2 on top).

Hanger Bars: Swivel hanger bars with True Nail for easy installation in regular lumber, engineered lumber, and laminated beams. Integral T-bar slots for easy installation in T-Bars. Hanger bars span 24". Score lines allow for tool-free hanger bar size reduction. Integral leveling flange allows for single-person installation while aligning housing with the joists.

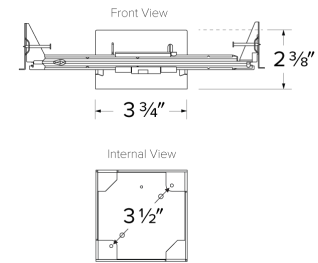
Listings:

- IC Rated for direct contact with insulation
- ASTM E283 Certified Air Tight
- Damp location listed
- cUL listed under cUL 514A Standards as a metallic outlet box

Compatible With:

- LED Disk Lights, LED Sky™ Panels, and LED Ceiling Mount Fixtures

Dimensions



Product Number

Item	Description
ELJ4S	3 3/4" x 3 3/4" x 2 3/8"

Compatible Products



For use with ALO™ Boxes

4" & 6" LED Disk Lights



4" Round Alva™ Disk Light

CAT NO.	SPECIFICATIONS
ELSF4030W, BZ, N	13W, 800 lm, 3000K



6" Round Alva™ Disk Light

CAT NO.	SPECIFICATIONS
ELSF1127W	13W, 900 lm, 2700K
ELSF1130W, BZ, N	13W, 900 lm, 2700K



6" Round Arvid™ Disk Light

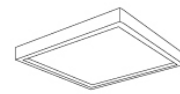
CAT NO.	SPECIFICATIONS
ELSF1030W	11.5W, 850 lm, 3000K

Round & Square LED Sky Panels™



Round LED Sky Panel™

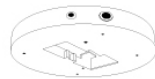
CAT NO.	SPECIFICATIONS
ELSP43CT3W, B	4", 10W, 600 lm, 3000K - 4000K
ELSP6327W, B	6", 15W, 850 lm, 2700K
ELSP63CT3W, B	6", 15W, 900 lm, 3000K - 4000K
ELSP8327W, B	8", 18W, 1150 lm, 2700K
ELSP83CT3W, B	8", 18W, 1200 lm, 3000K - 4000K
ELSP12CT3W, B	12", 22W, 2160 lm, 3000K - 4000K



Square LED Sky Panel™

CAT NO.	SPECIFICATIONS
ELSP4430W, B	4", 10W, 600 lm, 3000K
ELSP4440W, B	4", 10W, 650 lm, 4000K
ELSP6630W, B	6", 15W, 900 lm, 3000K
ELSP6640W, B	6", 15W, 975 lm, 4000K
ELSP8830W, B	8", 18W, 1200 lm, 3000K
ELSP8840W, B	8", 18W, 1300 lm, 4000K
ELSP2230W, B	12", 22W, 2000 lm, 3000K
ELSP2240W, B	12", 22W, 2160 lm, 4000K

Accessories for LED Sky Panels™



Emergency Battery Back-Up

CAT NO.	SPECIFICATIONS
KEM-ELSW	15W, 900 lm, 120V, For use with 4" & 6" Sky Panels™ only

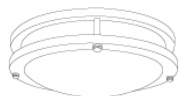
*Finishes: **W** - All White, **B** - All Black, **BZ** - All Bronze, **N** - All Nickel

Compatible Products

For use with ALO™ Boxes

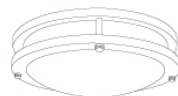


Ceiling Mount LED Fixtures



Darby™ Standard LED Fixtures

CAT NO.	SPECIFICATIONS
ELD11030W	10", 14W, 980 lm, 3000K
ELD11040W	10", 14W, 1010 lm, 4000K
ELD11630W	16", 26W, 1820 lm, 3000K
ELD11640W	16", 26W, 1930 lm, 4000K



Darby™ High Lumen LED Fixtures

CAT NO.	SPECIFICATIONS
ELD21030W, BZ	10", 18W, 1170 lm, 3000K
ELD21040W, BZ	10", 18W, 1260 lm, 4000K
ELD21430W, BZ	14", 26W, 1690 lm, 3000K
ELD21440W, BZ	14", 26W, 1820 lm, 4000K
ELD21630W, BZ	16", 30W, 1950 lm, 3000K
ELD21640W, BZ	16", 30W, 2100 lm, 4000K



Dustin™ Standard LED Fixtures

CAT NO.	SPECIFICATIONS
ELD31230W	12", 14W, 980 lm, 3000K
ELD31240W	12", 14W, 980 lm, 4000K
ELD31430W	14", 18W, 1260 lm, 3000K
ELD31440W	14", 18W, 1260 lm, 4000K



Dustin™ High Lumen LED Fixtures

CAT NO.	SPECIFICATIONS
ELD32230W	12", 22W, 1540 lm, 3000K
ELD32240W	12", 22W, 1540 lm, 4000K
ELD32430W	14", 26W, 1820 lm, 3000K
ELD32440W	14", 26W, 1820 lm, 4000K
ELD32630W	16", 30W, 2100 lm, 3000K
ELD32640W	16", 30W, 2100 lm, 4000K

*Finishes: **W** - All White, **B** - All Black, **BZ** - All Bronze, **N** - All Nickel



Dimmer Compatibility Chart for The Standard Poplar™ System

ELCO Lighting

For Reference Only

Testing conducted by ELCO Lighting is not a substitute for and does not imply certification by an independent laboratory or any other standards certification. Refer to manufacturer specifications for more detailed information on product certifications and standards. Consult the dimmer manufacturer prior to installation to ensure compatibility.

Manufacturer	Product	Part Number	Dimmed Light Output Range
Leviton	SureSlide® Electro-Mechanical Incandescent Slide Dimmer, 600W, 120 VAC 60Hz, Single-Pole	6631	8% - 100%
	SureSlide® 600W, 120 VAC 60Hz, SureSlide Preset Electro-Mechanical Incandescent Slide Dimmer	6633	9% - 100%
	Trimatron Deluxe 3-Way Electro-Mechanical Incandescent Rotary Dimmer with Push ON/OFF	6683-IW	9% - 100%
	IllumaTech Preset Electro-Mechanical, 600W, 120VAC 60Hz, Single-Pole & 3-Way Incandescent Slide Dimmer, LED Locator	IPI06-1LZ	8% - 100%
Lutron	Ariadni® 600W 3-Way Incandescent/Halogen Dimmer	AY-603P	8% - 100%
	Ariadni® C·L Single Pole/3-Way Dimmer. 150W Max for LED/CFL or 600W Incandescent/Halogen	AYCL-153P	5% - 100%
	Ariadni® 600W Single Pole, Magnetic Low Voltage Dimmer	AYLV-600P	7% - 100%
	Skylark Contour® Single Pole/3-Way Incandescent/Halogen or Magnetic Low Voltage, Preset Dimmer	CT-103P	6% - 100%
	Skylark Contour® C·L, Single Pole/3-Way Dimmer. 150W Max LED/CFL or 600W Incandescent/Halogen	CTCL-153P	5% - 100%
	Diva® Series Single Pole Dimmer	DV-600P	10% - 100%
	Diva® (gloss) 3-Way, Electronic Low Voltage Dimmer	DVELV-303P	5% - 100%
	Maestro® C·L Single Pole/3-Way/Multi-Location Dimmer. 150W Max for LED/CFL, or 600W Incandescent/Halogen	MACL-153M	3% - 100%
	Maestro® (Gloss) Single Pole/Multi-Location, Electronic Low Voltage Dimmer	MAELV-600	6% - 100%
	Skylark® Series 600W Single Pole	S-600P	10% - 100%
	Skylark® C·L Single Pole/3-Way Dimmer. 150W Max for LED/CFL or 600W Incandescent/Halogen	SCL-153P	5% - 100%
	Skylark® 300W, Single Pole, Electronic Low Voltage, Preset Dimmer	SELV-300P	4% - 100%

*NOTE: Refer to dimmer manufacturer's documentation for installation instructions and circuit details

Disclaimer: Minimum and maximum loads for LEDs and CFLs are given in number of lamps and may vary depending on the lamp being used. Testing conducted by ELCO Lighting is not a substitute for and does not imply certification by an independent laboratory or any other standards certification. Refer to manufacturer specifications for more detailed information on product certifications and standards.