

# Pex™ 4" Round Trimless Adjustable Smooth Reflector Trim

Pex™ Precision die-cast trims with twist-on system for easy tool-free installation



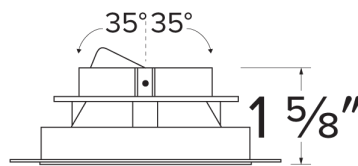
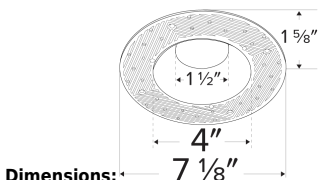
## Features

- 4" Trimless Smooth Reflector.
- ELK430 includes spackle frame
- ELK415 requires spackle frame EL4SFR
- 35° Adjustability.
- Convenient twist-on design for easy installation.
- Damp Location Rated.
- Lamp: Koto™ LED Module and Canless Koto™ LED Module.

## Technical Details

**Installation:** Twist-lock design allows for easy mounting onto the Koto™ LED Module.

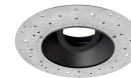
**Lamp:** Koto™ LED Module.



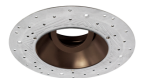
## Options



White



Black



Bronze



ELK415 - Wht Reflector



ELK415 - Black Reflector



ELK415 - Bronze Reflector



ELK415 - Haze Reflector

## Product Number

| Item    | Description                  | Finish    |
|---------|------------------------------|-----------|
| ELK430W | Spackle frame with Reflector | All White |

## Product Number Builder Example: ELK430W

Pex™ 4" Trimless Smooth Reflector

Finish

ELK430

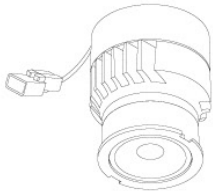
- W** All White
- B** All Black
- BZ** All Bronze
- H** All Haze

# Compatible Products



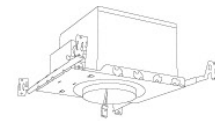
For use with 4" Koto™ Twist-&-Lock Trimless

## Koto™ LED Module & 4" Dedicated LED ICA Housing



**Koto™ LED Module**  
ELK07 - ELK09

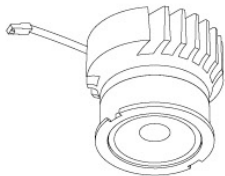
| PRODUCT NUMBER BUILDER |        |                                |                             |
|------------------------|--------|--------------------------------|-----------------------------|
| Koto™ LED Module       | Lumens | Color Temperature              | Beam Angle                  |
| ELK                    |        |                                |                             |
| 07                     | 750 lm | 27 2700K                       | (blank) 38° lens (Standard) |
| 09                     | 950 lm | 30 3000K                       | -S 18° lens                 |
|                        |        | 35 3500K                       | -N 25° lens                 |
|                        |        | 40 4000K                       | -W 60° lens                 |
|                        |        | SD Sunset Dimming (ELK09 Only) |                             |



4" ICA Maximum Adjustability Housing  
**New Construction**

| CAT NO.  | SPECIFICATIONS        |
|----------|-----------------------|
| EL485ICA | Maximum Adjustability |

## Koto™ Architectural LED Light Engine & 4" Architectural ICA Housings

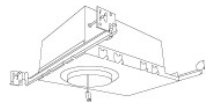


**Koto™ LED Light Engine**  
ELK19 - ELK21

| PRODUCT NUMBER BUILDER |                |                                |                             |
|------------------------|----------------|--------------------------------|-----------------------------|
| Koto™ LED Light Engine | Lumens         | Color Temperature              | Beam Angle                  |
| ELK                    |                |                                |                             |
| 19                     | 750 - 850 lm   | 27D 2700K                      | (blank) 38° lens (Standard) |
| 21                     | 1100 - 1500 lm | 30D 3000K                      | -S 18° lens                 |
|                        |                | 35D 3500K                      | -N 25° lens                 |
|                        |                | 40D 4000K                      | -W 60° lens                 |
|                        |                | SD Sunset Dimming (ELK19 Only) |                             |



4" High Lumen Maximum Adjustability ICA Housing  
1500 lm (18.9W) w/ELK21 Series Module  
Not for use with ELK19 Series Module  
**New Construction**



4" Shallow Maximum Adjustability ICA Housing  
850 lm (14.7W) w/ELK19 Series Module  
1100 lm (14.7W) w/ELK21 Series Module  
**New Construction**

| CAT NO.    | SPECIFICATIONS                      |
|------------|-------------------------------------|
| E4LK47ICA  | 15.7W - 120V - Triac/ELV            |
| E4LK48ICAD | 15.7W - 120/277V<br>0-10V/Triac/ELV |
| E4LK79ICAD | 18.9W - 120/277V<br>0-10V/Triac/ELV |

| CAT NO.    | SPECIFICATIONS             |
|------------|----------------------------|
| E4LK98ICA  | 120V - Triac/ELV           |
| E4LK99ICAD | 120/277V - 0-10V/Triac/ELV |

### ACCESSORIES FOR KOTO™ LED MODULE & KOTO™ ARCHITECTURAL LED LIGHT ENGINE



#### Lens

|        |          |
|--------|----------|
| EP731C | 18° Lens |
| EP732C | 25° Lens |
| EP733C | 38° Lens |
| EP734C | 60° Lens |

\*EP732C, EP733C, EP734C Included



#### Reflectors

|        |     |
|--------|-----|
| EP735C | 15° |
| EP736C | 25° |
| EP737C | 38° |
| EP738C | 60° |



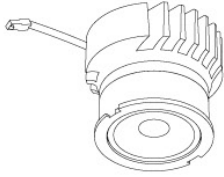
#### Secondary Optics

|     |               |
|-----|---------------|
| L45 | Hex Louver    |
| L46 | Linear Louver |
| L47 | Spread Louver |

# Compatible Products

For use with 4" Koto™ Twist-On Trims

## Koto™ Architectural LED Light Engine



**Koto™ LED Light Engine**  
ELK19 - ELK21

| PRODUCT NUMBER BUILDER |                |                                |                                       |
|------------------------|----------------|--------------------------------|---------------------------------------|
| Koto™ LED Light Engine | Lumens         | Color Temperature              | Beam Angle                            |
| ELK                    |                |                                |                                       |
| 19                     | 750 - 850 lm   | 27D 2700K                      | (blank) 38° lens (Standard)           |
| 21                     | 1100 - 1500 lm | 30D 3000K                      | -S 18° lens                           |
|                        |                | 35D 3500K                      | -N 25° lens                           |
|                        |                | 40D 4000K                      | -W 60° lens                           |
|                        |                | SD Sunset Dimming (ELK19 Only) | -FC 18° - 50° Adjustable (ELK21 Only) |

*\*Standard module includes 38° installed with 25° & 60° field changeable lenses.*

### ACCESSORIES



#### Lens

- EP731C** 18° Lens
  - EP732C** 25° Lens
  - EP733C** 38° Lens
  - EP734C** 60° Lens
- \*EP732C, EP733C, EP734C  
Included with standard module



#### Snoot

- L50W** White
- L50B** Black



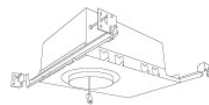
#### Secondary Optics

- L45** Hex Louver
- L46** Linear Lens
- L47** Spread Louver
- L49** Frosted Lens
- L51** Color Shifter

## 4" Koto™ Architectural Recessed Housings



**4" Maximum Adjustability ICA Housing**  
Use with ELK21 Series Module  
Not for use with ELK19 Series Module  
**New Construction**



**4" Shallow Maximum Adjustability ICA Housing**  
1000 lm (14.7W) w/ELK19 Series Module  
1200 lm (14.7W) w/ELK21 Series Module  
**New Construction**

| CAT NO.    | SPECIFICATIONS                            |
|------------|---|
| E4LK47ICA  | 1350 lm, 15.7W, 120V, Triac/ELV           |
| E4LK48ICAD | 1350 lm, 15.7W, 120/277V, 0-10V/Triac/ELV |
| E4LK78ICA  | 1500 lm, 18.9W, 120V, Triac/ELV           |
| E4LK79ICAD | 1500 lm, 18.9W, 120/277V, 0-10V/Triac/ELV |

| CAT NO.    | SPECIFICATIONS            |
|------------|---------------------------|
| E4LK98ICA  | 120V, Triac/ELV           |
| E4LK99ICAD | 120/277V, 0-10V/Triac/ELV |

# Compatible Products

For use with 4" Koto™ Twist-On Trims



## Koto™ 24V DC LED Light Engine



24V DC Koto™ LED Light Engine

| PRODUCT NUMBER BUILDER |        |                   |         |
|------------------------|--------|-------------------|---------|
| Koto™ LED Light Engine | Lumens | Color Temperature | Voltage |
| ELK                    |        |                   |         |

|    |        |    |       |     |        |
|----|--------|----|-------|-----|--------|
| 08 | 800 lm | 27 | 2700K | -24 | 24V DC |
|    |        | 30 | 3000K |     |        |

*\*Standard module includes 38° installed with 25° & 60° field changeable lenses.*

### ACCESSORIES



#### Lens

|        |          |
|--------|----------|
| EP731C | 18° Lens |
| EP732C | 25° Lens |
| EP733C | 38° Lens |
| EP734C | 60° Lens |

*\*EP732C, EP733C, EP734C Included with standard module*



#### Snoot

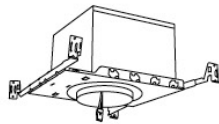
|      |       |
|------|-------|
| L50W | White |
| L50B | Black |



#### Secondary Optics

|     |               |     |                  |
|-----|---------------|-----|------------------|
| L45 | Hex Louver    | L57 | White Hex Louver |
| L46 | Linear Lens   | L52 | Blue Lens        |
| L47 | Spread Louver | L53 | Pink Shifter     |
| L49 | Frosted Lens  |     |                  |
| L51 | Color Shifter |     |                  |

## 4" Koto™ Dedicated LED ICA Housings (24V DC Input)



24V DC 4" ICA Maximum Adjustability Housing  
New Construction

| CAT NO.    | SPECIFICATIONS        |
|------------|-----------------------|
| E24V485ICA | Maximum Adjustability |

*\*Requires 24V DC Transformer*