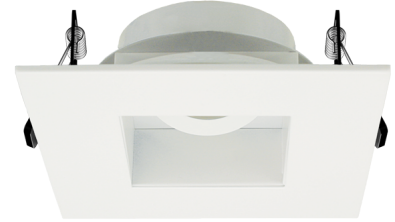


Pex™ 4" Canless Square Adjustable Reflector

Pex™ Precision die-cast adjustable trims with twist-on system for easy Canless Koto™ Module installation



Features

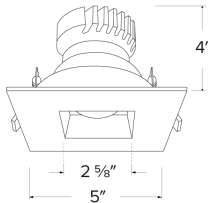
- Works with ceiling thicknesses up to 1.25"
- 358° Rotation, 35° Adjustability
- Convenient twist-on design for easy installation.
- Damp Location Rated.
- Lamp: Canless Koto™ LED Module.

Technical Details

Construction: Diecast aluminum with a powder coated finish.

Installation: Twist-on design allows for easy mounting onto the Canless Koto™ LED Module.

Lamp: Koto™ LED Module and Canless Koto™ LED Module.



Dimensions:

Options



All White



All Bronze

Product Numbers

Item	Finish
EKCL4282W	All White
EKCL4282BZ	All Bronze

Product Number Builder Example: EKCL4282W

Pex™ 4" Canless Square Adjustable Reflector

Finish

EKCL4282

- W** All White
- BZ** All Bronze