

Pex™ 4" Canless Round Adjustable Reflector

Pex™ Precision die-cast adjustable trims with twist-on system for easy Canless Koto™ Module installation



Features

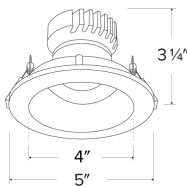
- 4" Round Adjustable Reflector.
- Works with ceiling thicknesses up to 1.25"
- 358° rotation. 25°-35° tilt.
- Convenient twist-on design for easy installation.
- Damp Location Rated.
- Lamp: Canless Koto™ LED Module.

Technical Details

Construction: Diecast aluminum with a powder coated finish.

Installation: Twist-on design allows for easy mounting onto the Canless Koto™ LED Module.

Lamp: Canless Koto™ LED Module.



Dimensions:

Options



All White



All Black



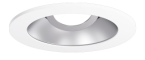
All Bronze



Black with White Ring



Chrome with White Ring



Haze with White Ring

Product Numbers

Item	Finish
EKCL4129W	All White
EKCL4129BB	All Black
EKCL4129BZ	All Bronze
EKCL4129B	Black with White Trim
EKCL4129C	Chrome with White Trim
EKCL4129H	Haze with White Trim

Product Number Builder Example: EKCL4129W

Pex™ 4" Canless Round Adjustable Reflector

Finish

EKCL4129

- W** All White
- BB** All Black
- BZ** All Bronze
- B** Black with White Trim
- C** Chrome with White Trim
- H** Haze with White Trim

