

# Pex™ 3" Canless Adjustable Trimless Reflector

Pex™ Precision die-cast trims with twist-on system for easy tool-free installation



## Features

- 3" Adjustable Trimless Reflector (ELK315)
- 3" Trimless Spackle Frame Ordered Separately (EL3SFR)
- 3" Knife Edge Wood Ceiling Trim Ordered Separately (EL3WCRW, EL3WCRB)
- 35° Adjustability
- Convenient twist-on design for easy installation
- Damp Location Rated
- Lamp: Koto™ LED Module and Canless Koto™ LED Module

## Technical Details

**Installation:** Twist-lock design allows for easy mounting onto the Koto™ LED Module.

**Lamp:** Koto™ LED Module and Canless Koto™ LED Module.

**Listings:** Damp Location Rated.

## Options



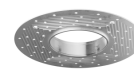
**ELK315 - White Reflector**



**ELK315H - Haze Reflector**



**ELK315B - Black Reflector**



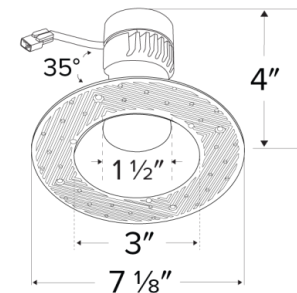
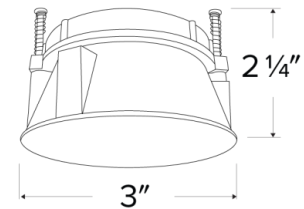
**EL3SFR - Spackle Frame**



**EL3WCRW - White Adaptor with Mounting Clips**



**EL3WCRB - Black Adaptor with Mounting Clips**



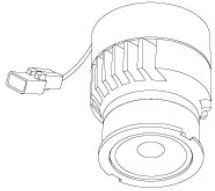
## Product Numbers

<b>Item</b>	<b>Description</b>	<b>Finish</b>
<b>ELK315W</b>	3" Canless Round Adjustable Trimless Reflector	All White
<b>ELK315H</b>	3" Canless Round Adjustable Trimless Reflector	All Haze
<b>ELK315B</b>	3" Canless Round Adjustable Trimless Reflector	All Black
<b>EL35FR</b>	3" Round Trimless Spackle Frame	

# Compatible Products

For use with 3" Koto™ Twist-&-Lock Trimless

## Koto™ LED Module



**Koto™ LED Module**  
ELK07, ELK09, & ELK11

PRODUCT NUMBER BUILDER					
Koto™ LED Module	Lumens	Color Temperature	Beam Angle		
ELK					
07	750 lm	27 2700K	(blank) 38° lens (Standard)		
09	950 lm	30 3000K	-S 18° lens		
11	1150 lm	35 3500K	-N 25° lens		
		40 4000K	-W 60° lens		
		SD Sunset Dimming (For ELK09 & ELK11)	-FC 18° - 50° Adjustable (ELK07 Only)		

### ACCESSORIES



**Lens**

- EP731C** 18° Lens
  - EP732C** 25° Lens
  - EP733C** 38° Lens
  - EP734C** 60° Lens
- EP732C, EP733C, EP734C Included



**Snoot**

- L50W** White
- L50B** Black



**Secondary Optics**

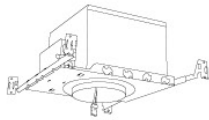
- L45** Hex Louver
- L46** Linear Lens
- L47** Spread Louver
- L49** Frosted Lens
- L51** Color Shifter

**Koto™ LED Module with 5-CCT Switch**

**Product Number**

<b>ELK08CT5</b>	825 lm
<b>ELK10CT5</b>	1000 lm

## 3" Koto™ Dedicated LED ICA Housings



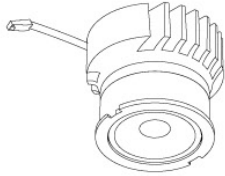
3" ICA Maximum Adjustability Housing  
**New Construction**

CAT NO.	SPECIFICATIONS
EL386ICA	Maximum Adjustability

# Compatible Products

For use with 3" Koto™ Twist-&-Lock Trimless

## Koto™ Architectural LED Light Engine



**Koto™ LED Light Engine**  
ELK19 - ELK21

PRODUCT NUMBER BUILDER			
Koto™ LED Light Engine	Lumens	Color Temperature	Beam Angle
<b>ELK</b>			
<b>19</b>	750 - 850 lm	<b>27D</b> 2700K	<b>(blank)</b> 38° lens (Standard)
<b>21</b>	1100 - 1500lm	<b>30D</b> 3000K	<b>-S</b> 18° lens
		<b>35D</b> 3500K	<b>-N</b> 25° lens
		<b>40D</b> 4000K	<b>-W</b> 60° lens
		<b>SD</b> Sunset Dimming (ELK19 Only)	<b>-FC</b> 18° - 50° Adjustable (ELK21 Only)

### ACCESSORIES

**Lens**

**EP731C** 18° Lens  
**EP732C** 25° Lens  
**EP733C** 38° Lens  
**EP734C** 60° Lens

\*EP732C, EP733C, EP734C Included

**Secondary Optics**

**L45** Hex Louver  
**L46** Linear Lens  
**L47** Spread Louver  
**L49** Frosted Lens  
**L51** Color Shifter

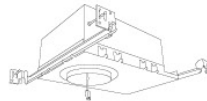
**Shoot**

**L50W** White  
**L50B** Black

## 3" Koto™ Architectural Recessed Housings



3" High Lumen Maximum Adjustability ICA Housing  
1500 lm (18.9W) w/ELK21 Series Module  
Not for use with ELK19 Series Module  
**New Construction**



3" Shallow Maximum Adjustability ICA Housing  
850 lm (14.7W) w/ELK19 Series Module  
1100 lm (14.7W) w/ELK21 Series Module  
**New Construction**

CAT NO.	SPECIFICATIONS
E3LK53ICA	15.7W, 120V, Triac/ELV
E3LK54ICAD	15.7W, 120/277V, 0-10V/Triac/ELV
E3LK54ICAD-L	15.7W, 120/277V, 0-10V/Triac/ELV (Lutron 1% dimming)
E3LK54ICADAL	15.7W, 120/277V, DALI 2
E3LK84ICA	18.9W, 120V, Triac/ELV
E3LK85ICAD	18.9W, 120/277V, 0-10V/Triac/ELV
E3LK85ICAD-L	18.9W, 120/277V, 0-10V/Triac/ELV (Lutron 1% dimming)
E3LK85ICADAL	18.9W, 120/277V, DALI 2

CAT NO.	SPECIFICATIONS
E3LK76ICA	120V, Triac/ELV
E3LK77ICAD	120/277V, 0-10V/Triac/ELV
E3LK77ICADAL	120/277V, DALI 2

# Compatible Products



For use with 3" Koto™ Twist-On Trims

## Koto™ 24V DC LED Light Engine



24V DC Koto™ LED Light Engine

PRODUCT NUMBER BUILDER			
Koto™ LED Light Engine	Lumens	Color Temperature	Voltage
ELK			

08 800 lm      27 2700K      -24 24V DC  
30 3000K

*\*Standard module includes 38° installed with 25° & 60° field changeable lenses.*

### ACCESSORIES



#### Lens

#### Snoot

- EP731C 18° Lens      L50W White
  - EP732C 25° Lens      L50B Black
  - EP733C 38° Lens
  - EP734C 60° Lens
- \*EP732C, EP733C, EP734C Included with standard module



#### Secondary Optics

- L45 Hex Louver      L57 White Hex Louver
- L46 Linear Lens      L52 Blue Lens
- L47 Spread Louver      L53 Pink Shifter
- L49 Frosted Lens
- L51 Color Shifter

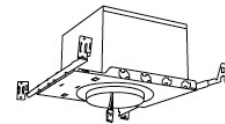
## 3" Koto™ Dedicated LED ICA Housings (24V DC Input)



24V DC 2-Hour Fire Rated 3" ICA Housing  
**New Construction**

CAT NO.	SPECIFICATIONS
E24V39FICA	7 1/2" Height - Sound Rated

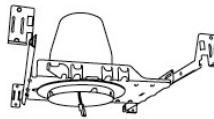
\*Requires 24V DC Transformer



24V DC 3" ICA Maximum Adjustability Housing  
**New Construction**

CAT NO.	SPECIFICATIONS
E24V386ICA	Maximum Adjustability

\*Requires 24V DC Transformer



24V DC 3" ICA Housing  
**New Construction**

CAT NO.	SPECIFICATIONS
E24V390ICA	

\*Requires 24V DC Transformer



24V DC 3" ICA Housing  
**Remodel**

CAT NO.	SPECIFICATIONS
E24V390RICA	

\*Requires 24V DC Transformer