

Oak™ Housings with 12V AC Transformer



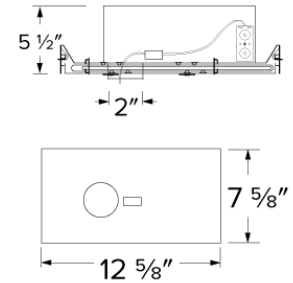
Features

- R60 Insulation housing, IC Airtight
- Includes individual electronic transformer
- 2" cutout for downlight (E1L02, E1L12 and E11F)
- 2 3/8" cutout for adjustable (E1L32 & E2L22)
- 2 1/2" cutout for trimless (EL01SFR + E1L61)
- Suitable for Chicago Plenum construction

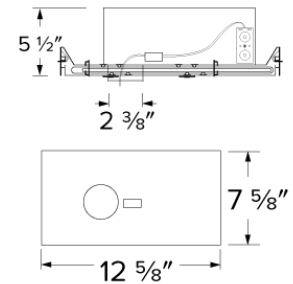
Specifications

Voltage	277V
Dimmable	0-10V

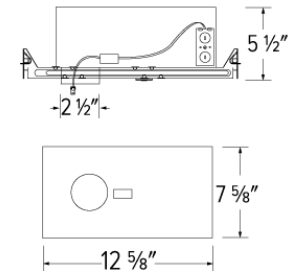
E1LF1



E1LF2



E1LF3TL



Product Number

Item	Description	Voltage	Dimming
E1LF1ICAJDX-7	For Oak Downlight	277V	0-10V

Product Number Builder Example: E1LF1ICAJ

Elco Oak™ Mounting Frame

E1LF

Cutout

- 1** For Oak Downlight
- 2** For Oak Adjustable
- 3TL** For Oak Trimless

IC Airtight

ICAJ ICA

Dimming

- 120V Input/ELV Dimmable
- 7** 277V Input
- DX** 120V Input/0-10V Dimmable
- DX-7** 277V Input/0-10V Dimmable

Compatible Products



For use with 1" Oak™ IC Rated R60 Insulation Housing

1" Oak™ Recessed Downlight LED Light Engines - use with E1LF1CAJ Series



E1L02 Series
Round Downlight
Finishes:
(W, B, BZ, H, BB)



E1L12 Series
Square Downlight
Finishes:
(W, B, BZ, H, BB)



E111
Cove Light
Finishes:
(W)

1" Oak™ Recessed Adjustable LED Light Engines - use with E1LF2CAJ Series

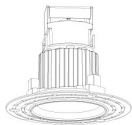


E1L32 Series
Round Gimbal
Finishes:
(W, B, BZ)



E1L22 Series
Square Pull Down
Finishes:
(W, B, BZ)

1" Oak™ Recessed Trimless LED Light Engines - use with E1LF3TLCAJ Series



E1L61 Series
Round Trimless
Finishes:
(W, B, BZ)

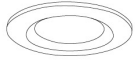
PRODUCT NUMBER BUILDER

Oak™ Light Engine	Style	Beam Angle	Color Temperature	Finish
E1L				
02	Round Downlight	F 38° (Standard)	27 2700K	W All White
12	Square Downlight	NF 28°	30 3000K	B Black
32	Round Gimbal	WF 60°	35 3500K	BZ All Bronze
22	Square Pull Down		40 4000K	H Haze w/White Ring
61	Round Trimless		SD Sunset	BB All Black

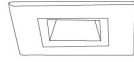
Compatible Products

For use with 1" Oak™ IC Rated R60 Insulation Housing

1" Oak™ Accessories



Downlight Trims
For E1L02 & E1L12



Downlight Trims
For E1L02 & E1L12



Optional Lenses for
E1L02, E1L12, & E1L32

CAT NO.	SPECIFICATIONS	CAT NO.	SPECIFICATIONS	CAT NO.	SPECIFICATIONS
RM1W	All White	RM11W	All White	EP713C	28°
RM1B	Black w/ White Ring	RM11B	Black w/ White Ring	EP715C	50°
RM1BZ	All Bronze	RM11BZ	All Bronze		
RM1H	Haze w/ White Ring	RM11H	Haze w/ White Ring		
RM1BB	All Black	RM11BB	All Black		