

# Oak™ Architectural R60 ICA New Construction Housing for Downlights



R60 Specialty housing for spray in insulation. To be used with Oak™ Architectural LED Downlights only.

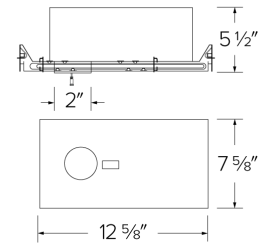
## Features

- R60 Housing designed for speciality spray in insulation
- Housing to be used with Oak™ Architectural Downlights only (E1AK02 & E1AK12)
- UL Listed for direct contact with insulation
- Housing specified for 900 lumens (8W)
- Driver specified for 120V (Triac/ELV) or 120/277V (0-10V/Triac/ELV)
- Damp Location Listed, Wet Location with Wet Location Light Engines
- JA8-2016-E, UL Listed

## Specifications

|                 |                               |
|-----------------|-------------------------------|
| <b>Wattage</b>  | 8W                            |
| <b>Lumens</b>   | 900 lm                        |
| <b>Voltage</b>  | 120/277V or 120V              |
| <b>Dimmable</b> | Triac/ELV,<br>0-10V/Triac/ELV |

## Dimensions



## Technical Details

**Construction:** IC rated for direct contact with insulation. For use in IC and non-IC conditions.

**Installation:** Designed for ceiling plenums where 2x6 joists or taller are used. High strength hanger bars can easily be nailed to joists. Suitable for T-grid and drop ceiling applications. See installation sheet for detailed information.

**Hanger Bars:** Pre Installed hanger bars with True Nail easy installation in regular lumber, engineered lumber, and Laminated Beams. Integral T-bar slots for easy installation in T-Bars. Spans up 24" and can be repositioned 90°. Score lines allow for tool-free hanger bar size reduction. Integral leveling flange allows for single-person installation while easily aligning the housings with the joists.

**Electrical:** Driver is rated for 120V or 120/277V input. High Efficiency driver with a power factor > 0.95.

**Dimmability:** Option Triac/ELV dimming or 0-10V/Triac/ELV dimming can be specified. Can be specified with Lutron drivers.

**Listings:** cUL Listed. UL Listed for Damp Location and for Wet Location with WET location Light Engines. UL Listed for Direct Contact with Insulation and Combustible Material.

## Product Numbers

| Item                 | Lumens | Watts | Voltage  | Dimming         |
|----------------------|--------|-------|----------|-----------------|
| <b>E1DWN08AJIC</b>   | 900 lm | 8W    | 120V     | Triac/ELV       |
| <b>E1DWN08AJICDX</b> | 900 lm | 8W    | 120/277V | 0-10V/Triac/ELV |

## Product Number Builder Example: E1DWN08AJIC

R60 ICA New Construction Housing

Lumens

Dimming

**E1DWN**

**08** 900 lm

**AJIC** Triac/ELV

**AJICDX** 0-10V/Triac/ELV

# Compatible Products

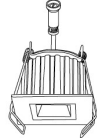


For use with 1" Oak™ Architectural IC Airtight New Construction Housings

## 1" Oak™ Architectural Downlights Use with E1DWN08AJIC (2" Cutout)



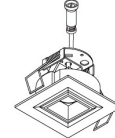
**E1AK02 Series**  
**Round Downlight**  
Finishes:  
(W, B, BZ, H, BB)



**E1AK12 Series**  
**Square Downlight**  
Finishes:  
(W, B, BZ, H, BB)



**E1AK32 Series**  
**Round Gimbal**  
Finishes:  
(W, B)



**E1AK22 Series**  
**Square Pull Down**  
Finishes:  
(W, B)

## 1" Oak™ Architectural Trimless Use with E1TRL08AJIC (2 3/4" Cutout)

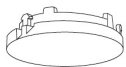


**E1AK61 Series**  
**Round Trimless**  
Finishes:  
(W, B, BZ)

### PRODUCT NUMBER BUILDER

| Oak™ Architectural | Style                      | Beam Angle              | Color Temperature | Finish                     |
|--------------------|----------------------------|-------------------------|-------------------|----------------------------|
| <b>E1AK</b>        |                            |                         |                   |                            |
|                    | <b>02</b> Round Downlight  | <b>F</b> 38° (Standard) | <b>27</b> 2700K   | <b>W</b> All White         |
|                    | <b>12</b> Square Downlight | <b>NF</b> 28°           | <b>30</b> 3000K   | <b>B</b> Black             |
|                    | <b>32</b> Round Gimbal     | <b>WF</b> 50°           | <b>35</b> 3500K   | <b>BZ</b> All Bronze       |
|                    | <b>22</b> Square Pull Down |                         | <b>40</b> 4000K   | <b>H</b> Haze w/White Ring |
|                    |                            |                         | <b>SD</b> Sunset  | <b>BB</b> All Black        |

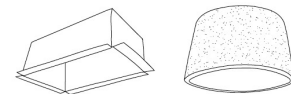
## 1" Oak™ Accessories



Trimless Rings



Lens & Optics



Fire Rated Products

| CAT NO. | SPECIFICATIONS | CAT NO. | SPECIFICATIONS                                  | CAT NO.    | SPECIFICATIONS                            |
|---------|----------------|---------|---|------------|---|
| RM1TLW  | All White      | EP713C  | 28° Lens  | FIREENCL   | Standard - 9" H x 20 3/8" L x 14 3/8" W   |
| RM1TLB  | All Black      | EP714C  | 38° Lens  | FIREENCL-S | Shallow - 7 1/4" H x 16" L x 14 3/8" W    |
| RM1TLBZ | All Bronze     | EP715C  | 50° Lens  |            | 1-Hr Fire Enclosure for Recessed Fixtures |
|         |                | L60     | Frosted Diffuser (For E1AK02, E1AK12, & E1AK32) | FIRECVR    | 9 3/4" H x 17" O.D. x 13" I.D.            |
|         |                | L61     | Hex Louver (For E1AK02, E1AK12, & E1AK32)       |            | 2-Hr Fire Cover for Recessed Fixtures     |



# Dimmer Compatibility Chart

## Architectural Oak™ System

**ELCO Lighting**

For E1DWN08, E1ATB08, E1TRL08, and E1LA08 Series

### For Reference Only

Testing conducted by ELCO Lighting is not a substitute for and does not imply certification by an independent laboratory or any other standards certification. Refer to manufacturer specifications for more detailed information on product certifications and standards. Consult the dimmer manufacturer prior to installation to ensure compatibility.

| Manufacturer                           | Product  | Part Number | Dimmed Light Output Range |
|--|--|-------------|---------------------------|
| <b>For Triac/ELV Dimmers</b>           |  |             |                           |
| Cooper                                 | Slide Dimmer, 277V, 600W Fluorescent/Halogen, Single Pole, 3-Way   | SAL06P      | 10% - 100%                |
| Leviton                                | Decora SureSlide® Single Pole with Slide -to-Off   | 6672        | 10% - 100%                |
| Lutron                                 | Caséta® Wireless Dimmer  | PD-6WCL     | 5% - 100%                 |
|  | Maestro, 120V AC, 50/60Hz, 150W LED/CFL, 600W Incandescent/Halogen, Single Pole, 3-Way, Indoor Application | MA-PRO      | 5% - 100%                 |
|  | Maestro, 120V, 50/60Hz, 150W LED/CFL, Single Pole, 3-Way   | MACL-153M   | 5% - 100%                 |
|  | Diva® Series 150W Single Pole/3-Way Dimmer   | DVCL-153P   | 5% - 100%                 |
|  | Skylark, 120V AC 60Hz, 150W LED/CFL, Single Pole, 3-Way  | SCL-153P    | 5% - 100%                 |
|  | Ariadni®/Toggler® Series 150W Single Pole/3-Way Dimmer   | TGCL-153P   | 5% - 100%                 |
|  | Diva, 120V AC, 60Hz, 600W Incandescent/Halogen, Single Pole, 3-Way, Residential/Commercial Application     | DV-603P     | 5% - 100%                 |
|  | Skylark® Series 600W Single Pole   | S-600P      | 5% - 100%                 |
| <b>For D Version Triac/ELV Dimmers</b> |  |             |                           |
| Leviton                                | Decora SureSlide® Single Pole with Slide -to-Off   | 6672        | 10% - 100%                |
| Lutron                                 | Caséta® Wireless Dimmer  | PD-6WCL     | 1% - 100%                 |
|  | Maestro, 120V AC, 50/60Hz, 150W LED/CFL, 600W Incandescent/Halogen, Single Pole, 3-Way, Indoor Application | MA-PRO      | 1% - 100%                 |
|  | Maestro, 120V, 50/60Hz, 150W LED/CFL, Single Pole, 3-Way   | MACL-153M   | 10% - 100%                |
|  | Diva® Series 150W Single Pole/3-Way Dimmer   | DVCL-153P   | 1% - 100%                 |
|  | Skylark, 120V AC 60Hz, 150W LED/CFL, Single Pole, 3-Way  | SCL-153P    | 1% - 100%                 |
|  | Diva® Series, 120V AC 60Hz, Low Voltage Load Type, 150W Single Pole  | DVLV-600P   | 1% - 100%                 |
|  | Diva, 120V AC, 60Hz, 600W Incandescent/Halogen, Single Pole, 3-Way, Residential/Commercial Application     | DV-603P     | 1% - 100%                 |
|  | Skylark® Series 600W Single Pole   | S-600P      | 1% - 100%                 |
| <b>For D Version 0–10V</b>             |  |             |                           |
| Lutron                                 | Diva®, 120/277V, 0-10V, Single Pole, 3-Way   | DVSTV       | 1% - 100%                 |
| Leviton                                | Decora Illumatech®, 120/277V, 0-10V, Fluorescent/LED Load Type, Single Pole, 3-Way                         | IP710       | 1% - 100%                 |

**\*NOTE: Refer to dimmer manufacturer’s documentation for installation instructions and circuit details**

Disclaimer: Minimum and maximum loads for LEDs and CFLs are given in number of lamps and may vary depending on the lamp being used. Testing conducted by ELCO Lighting is not a substitute for and does not imply certification by an independent laboratory or any other standards certification. Refer to manufacturer specifications for more detailed information on product certifications and standards.

Integrating our lighting with your Smart Home System is a breeze. Simply check your Smart Home system for compatible smart switches and cross reference that with our Dimming Compatibility Chart. Once the switches are integrated with your Smart Home system your lights will be ready to go.



2042 E. Vernon Ave. Vernon CA 90058 Tel 323.231.2600 Fax 323.231.3200 [elcolighting.com](http://elcolighting.com)