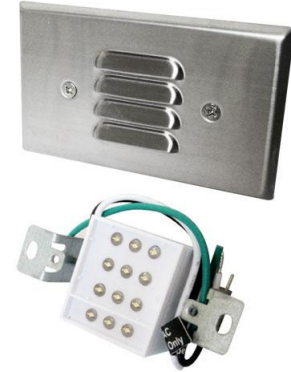


# Mini LED Step Light with Angled Louver

ELCO's Moa Collection consists of damp or wet location standard and mini LED Step Lights with or without a photocell which are offered in 3000K, 120V or 12V AC with an Angled Louver or acrylic lens in a sharp White, Black, Nickel or Bronze powder coated finish.



## Features

- Horizontal mount.
- Galvanized stamped steel housing.
- Powder coated faceplate.
- Integrated LED board and driver.
- Mounts in a standard single gang box.
- Life span of 35,000 hours L70.

## Specifications

<b>Wattage</b>	0.8W
<b>Voltage</b>	12V
<b>Color Temp.</b>	3000K
<b>Lamp Type</b>	LED
<b>CRI</b>	90+
<b>Wet Location</b>	Listed

## Options



**Black**



**Bronze**



**White**

## Technical Details

**Optics:** Louver face directs light downwards to illuminate walkway.

**Construction:** Stamped galvanized steel housing with smooth powder coat finish faceplate. LED Box with bracket for installation. Phillip screws hold faceplate to box.

**Installation:** Easily installs into a standard single gang switch box. Includes installation hardware and bracket.

### Electrical:

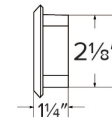
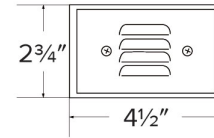
- Ambient operating temperature -23°F (-5°C) to 113°F (45°C).
- 120V ELST65: Driver input of 120V 50/60Hz connects directly to line voltage power.
- 12V ELST75: Input of 12V requires an external transformer.

### LED Technology:

- 90+ CRI for extremely accurate color rendering.
- Lumen Maintenance of 35,000 hours L70 Life.
- 12 LED array.

**Listings:** UL and cULus Listed for Wet Location.

## Dimensions



## Product Number

Item	Lamp type	CCT	Watts	Voltage	Finish
ELST75BZ	LED	3000K	0.8W	12V	All Bronze

**Product Number Builder** Example: **ELST65B**

ELCO Mini LED Step Lights

Voltage

Finish

**ELST**

**65** 120V  
**75** 12V

**W** All White  
**B** All Black  
**BZ** All Bronze