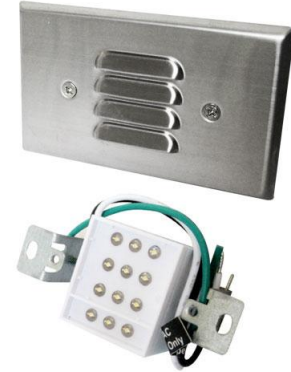


Mini LED Step Light with Angled Louver

ELCO's Moa Collection consists of damp or wet location standard and mini LED Step Lights with or without a photocell which are offered in 3000K, 120V or 12V AC with an Angled Louver or acrylic lens in a sharp White, Black, Nickel or Bronze powder coated finish.



Features

- Horizontal mount.
- Galvanized stamped steel housing.
- Powder coated faceplate.
- Integrated LED board and driver.
- Mounts in a standard single gang box.
- Life span of 35,000 hours L70.

Specifications

| | |
|---------------------|--------|
| Wattage | 0.8W |
| Voltage | 120V |
| Color Temp. | 3000K |
| Lamp Type | LED |
| CRI | 90+ |
| Wet Location | Listed |

Options



Black



Bronze



White

Technical Details

Optics: Louver face directs light downwards to illuminate walkway.

Construction: Stamped galvanized steel housing with smooth powder coat finish faceplate. LED Box with bracket for installation. Phillip screws hold faceplate to box.

Installation: Easily installs into a standard single gang switch box. Includes installation hardware and bracket.

Electrical:

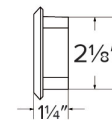
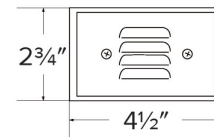
- Ambient operating temperature -23°F (-5°C) to 113°F (45°C).
- 120V ELST65: Driver input of 120V 50/60Hz connects directly to line voltage power.
- 12V ELST75: Input of 12V requires an external transformer.

LED Technology:

- 90+ CRI for extremely accurate color rendering.
- Lumen Maintenance of 35,000 hours L70 Life.
- 12 LED array.

Listings: UL and cULus Listed for Wet Location.

Dimensions



Product Number

| Item | Lamp type | CCT | Watts | Voltage | Finish |
|---------|-----------|-------|-------|---------|-----------|
| ELST65W | LED | 3000K | 0.8W | 120V | All White |

Product Number Builder Example: **ELST65B**

ELCO Mini LED Step Lights

Voltage

Finish

ELST

65 120V
75 12V

W All White
B All Black
BZ All Bronze