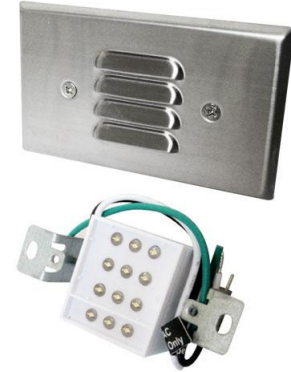


Mini LED Step Light with Angled Louver

ELCO's Moa Collection consists of damp or wet location standard and mini LED Step Lights with or without a photocell which are offered in 3000K, 120V or 12V AC with an Angled Louver or acrylic lens in a sharp White, Black, Nickel or Bronze powder coated finish.



Features

- Horizontal mount.
- Galvanized stamped steel housing.
- Powder coated faceplate.
- Integrated LED board and driver.
- Mounts in a standard single gang box.
- Life span of 35,000 hours L70.

Specifications

Wattage	0.8W
Voltage	120V or 12V
Color Temp.	3000K
Lamp Type	LED
CRI	90+
Wet Location	Listed

Options



Black



Bronze



White

Technical Details

Optics: Louver face directs light downwards to illuminate walkway.

Construction: Stamped galvanized steel housing with smooth powder coat finish faceplate. LED Box with bracket for installation. Phillip screws hold faceplate to box.

Installation: Easily installs into a standard single gang switch box. Includes installation hardware and bracket.

Electrical:

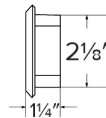
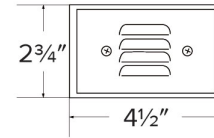
- Ambient operating temperature -23°F (-5°C) to 113°F (45°C).
- 120V ELST65: Driver input of 120V 50/60Hz connects directly to line voltage power.
- 12V ELST75: Input of 12V requires an external transformer.

LED Technology:

- 90+ CRI for extremely accurate color rendering.
- Lumen Maintenance of 35,000 hours L70 Life.
- 12 LED array.

Listings: UL and cULus Listed for Wet Location.

Dimensions



Product Numbers

Item	Lamp type	CCT	Watts	Voltage	Finish
ELST65B	LED	3000K	0.8W	120V	All Black
ELST65BZ	LED	3000K	0.8W	120V	All Bronze
ELST65W	LED	3000K	0.8W	120V	All White
ELST75B	LED	3000K	0.8W	12V	All Black
ELST75BZ	LED	3000K	0.8W	12V	All Bronze
ELST75W	LED	3000K	0.8W	12V	All White

Product Number Builder Example: **ELST65B**

ELCO Mini LED Step Lights

Voltage

Finish

ELST

65 120V
75 12V

W All White
B All Black
BZ All Bronze