

# Flexa™ 4" Round Adjustable Reflector for Canless Koto™ Module



Mix and match any ring finish with any reflector or baffle finish. Twist-on system for easy Canless Koto™ Module installation

## Features

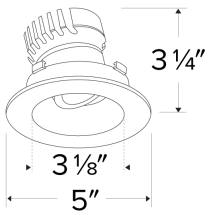
- Works with ceiling thicknesses up to 1.25"
- 2 Piece Flexa™ trims for maximum design flexibility
- Convenient twist-on design for ease of installation
- Diecast construction for lasting quality
- Lamp: Canless Koto™ LED Module
- 35° Adjustability
- 5" O.D. - 3 1/8" I.D. - 3 1/4" H

## Technical Details

**Construction:** Diecast aluminum with a powder coated finish.

**Installation:** Twist-on design allows for easy mounting onto the Canless Koto™ LED Module.

**Lamp:** Koto™ LED Module and Canless Koto™ LED Module.



**Dimensions:**

## Options



All White



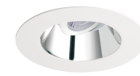
All Black



All Bronze



Black Reflector w/  
White Trim



Chrome Reflector  
w/ White Trim



Haze Reflector w/  
White Trim

## Product Number

| Item       | Finish               |
|------------|----------------------|
| EKCL4721HW | Haze with White Trim |

## Product Number Builder Example: EKCL4721WW

4" Canless Koto™ Flexa™ Trim

Style

Style Finish

Ring Finish

**EKCL472**

1 Reflector

W All White  
B All Black  
BZ All Bronze  
C Chrome  
H Haze

W All White  
B All Black  
BZ All Bronze