

Flexa™ 4" Round Adjustable Reflector for Canless Koto™ Module



Mix and match any ring finish with any reflector or baffle finish. Twist-on system for easy Canless Koto™ Module installation

Features

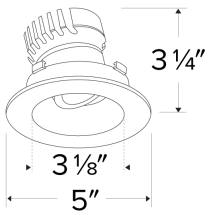
- Works with ceiling thicknesses up to 1.25"
- 2 Piece Flexa™ trims for maximum design flexibility
- Convenient twist-on design for ease of installation
- Diecast construction for lasting quality
- Lamp: Canless Koto™ LED Module
- 35° Adjustability
- 5" O.D. - 3 1/8" I.D. - 3 1/4" H

Technical Details

Construction: Diecast aluminum with a powder coated finish.

Installation: Twist-on design allows for easy mounting onto the Canless Koto™ LED Module.

Lamp: Koto™ LED Module and Canless Koto™ LED Module.

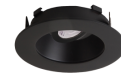


Dimensions:

Options



All White



All Black



All Bronze



Black Reflector w/
White Trim



Chrome Reflector
w/ White Trim



Haze Reflector w/
White Trim

Product Number

Item	Finish
EKCL4721CW	Chrome with White Trim

Product Number Builder Example: EKCL4721WW

4" Canless Koto™ Flexa™ Trim

Style

Style Finish

Ring Finish

EKCL472

1 Reflector

W All White
B All Black
BZ All Bronze
C Chrome
H Haze

W All White
B All Black
BZ All Bronze