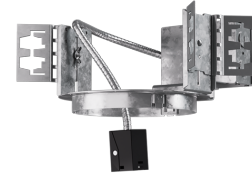


# Birch™ 6" New Construction Architectural Frame



## Features

- Encased Quick Connect for easy module installation and maintenance
- Optional 90 minutes Emergency Battery Backup
- Hanger bars required (sold separately)

## Technical Details

**Construction:** Constructed from 16 gauge galvanized steel for large architectural applications

**Installation:** Designed for commercial architectural buildings. Easily installed with hanger bars (sold separately). Light engine installed into frame

**Junction Box:** Positioned to accommodate straight conduit runs. 1/2" trade size conduit knockouts and pry-out knockout slots for easy romex installation

**Hanger Bars:** Hanger bars sold separately as FB27 - Set of two 27" hanger bars for wood construction or CH26 - Set of two 26" C-Channel hanger bars for T-Bar Ceiling

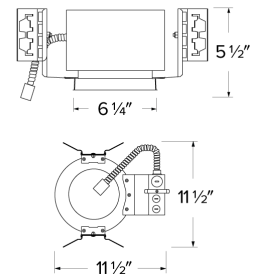
**Warranty:** ELCO Products are built to last. 5-year Limited warranty

## Options



### Optional Battery Backup

## Dimensions



## Product Number

Item	Description
ELB6EH	New Construction Architectural Frame

## Product Number Builder

Birch™ 6" New Construction Architectural Frame

**ELB6EH**

Optional

### No Battery Backup

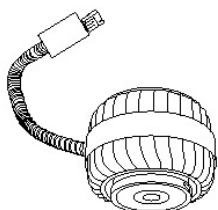
**-EM5** Emergency Battery Backup

# Compatible Products

For use with Birch™ Architectural Frames



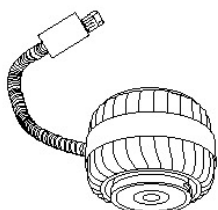
## Birch™ LED Modules



**Birch™ Pro** LED Module with 5-CCT Switch (750 lm - 1500 lm)



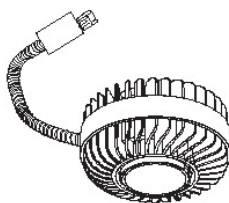
CAT NO.	COLOR TEMPERATURE	SPECIFICATIONS
ELB15RCT5ICA	5-CCT Switch 2700K, 3000K, 3500K, 4000K, 5000K	<ul style="list-style-type: none"><li>• IC Rated, for use in IC and Non-IC applications</li><li>• 750 lm - 1500 lm (10W - 20W)</li><li>• Beam Angle adjustment from 25°-45°</li><li>• 120/277V input with 0-10V dimming</li></ul>



**Birch™ High Lumen** LED Module (1250 lm - 3000 lm)



CAT NO.	COLOR TEMPERATURE	SPECIFICATIONS
ELB30R30	3000K	<ul style="list-style-type: none"><li>• Non-IC, for use in Non-IC applications</li><li>• 1250 lm - 3000 lm (13W - 30W)</li><li>• Beam Angle adjustment from 22°-50°</li><li>• 120/277V input with 0-10V dimming</li></ul>
ELB30R35	3500K	
ELB30R40	4000K	



**Birch™ High Lumen** LED Module (3200 lm - 5000 lm)



CAT NO.	COLOR TEMPERATURE	SPECIFICATIONS
ELB50R30	3000K	<ul style="list-style-type: none"><li>• Non-IC, for use in Non-IC applications</li><li>• 3200 lm - 5000 lm (32W - 55W)</li><li>• Beam Angle adjustment from 22°-50°</li><li>• 120/277V input with 0-10V dimming</li><li>• Works with 6" &amp; 8" Trims (ELB610 &amp; ELB810 only)</li></ul>
ELB50R35	3500K	
ELB50R40	4000K	

## 4", 6", & 8" Birch™ Twist-On Trims



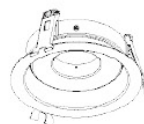
**4" Round Reflector**

CAT NO.	SPECIFICATIONS
ELB410W	All White
ELB410BB	All Black
ELB410H	All Haze (Semi-Specular)
ELB410HW	Haze/White Trim



**6" Round Reflector**

CAT NO.	SPECIFICATIONS
ELB610W	All White
ELB610BB	All Black
ELB610H	All Haze (Semi-Specular)
ELB610HW	Haze/White Trim



**6" Round Adjustable Reflector**

CAT NO.	SPECIFICATIONS
ELB629W	All White
ELB629B	All Black
ELB629H	All Haze (Semi-Specular)

• Not compatible with ELB50R Module Series



**8" Round Reflector**

CAT NO.	SPECIFICATIONS
ELB810W	All White
ELB810H	All Haze (Semi-Specular)

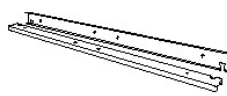
• Not compatible with ELB50R Module Series

## Hanger Bars for Birch™ Architectural Frames



**27" Flat Hanger Bars**

CAT NO.	SPECIFICATIONS
FB27	For wood construction, Set of 2



**26" C-Channel Hanger Bars**

CAT NO.	SPECIFICATIONS
CH26	For T-Bar Ceilings, Set of 2