

Birch™ 4" Square New Construction Plaster Frame



Features

- New Construction Plaster frame with hanger bars
- Encased Quick Connect for easy module installation and maintenance
- Optional 90 minutes Emergency Battery Backup

Technical Details

Construction: Constructed from 16 gauge galvanized steel for large architectural applications

Installation: Designed for commercial buildings. Easily installed with included hanger bars. Light engine installed into frame

Junction Box: Positioned to accommodate straight conduit runs. 1/2" trade size conduit knockouts and pry-out knockout slots for easy romex installation

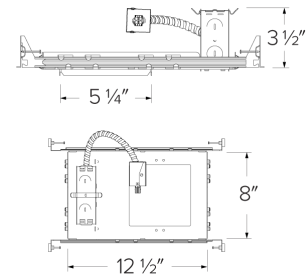
Warranty: ELCO Products are built to last. 5-year Limited warranty

Options



Optional Battery Backup

Dimensions



Product Number

| Item | Description |
|-----------|---------------------------------------|
| ELB44SQPF | Square New Construction Plaster Frame |

Product Number Builder Example: ELB44SQPF

Birch™ 4" Square New Construction Plaster Frame

Optional

ELB44SQPF

No Battery Backup

-EM5 Emergency Battery Backup

Compatible Products

For use with 4" Birch Square Frames

Birch™ LED Modules



Birch™ Pro LED Module with 5-CCT Switch (750 lm - 1500 lm)

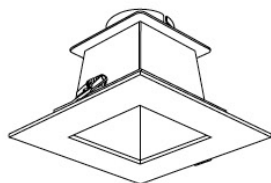
| CAT NO. | COLOR TEMPERATURE | SPECIFICATIONS |
|--------------|--|---|
| ELB15RCT5ICA | 5-CCT Switch 2700K, 3000K, 3500K, 4000K, 5000K | <ul style="list-style-type: none">• IC Rated, for use in IC and Non-IC applications• 750 lm / 1000 lm / 1500 lm (10W / 12W / 20W)• Beam Angle adjustment from 25°-45°• 120/277V input with 0-10V dimming |



Birch™ High Lumen LED Module (1250 lm - 3000 lm)

| CAT NO. | COLOR TEMPERATURE | SPECIFICATIONS |
|----------|-------------------|---|
| ELB30R30 | 3000K | <ul style="list-style-type: none">• Non-IC, for use in Non-IC applications• 1250 lm / 2000 lm / 3000 lm (13W / 20W / 35W)• Beam Angle adjustment from 22°-50°• 120/277V input with 0-10V dimming |
| ELB30R35 | 3500K | |
| ELB30R40 | 4000K | |

4" Birch™ Twist-On Trims



4" Square Reflector Trim

| CAT NO. | SPECIFICATIONS |
|----------|----------------------|
| ELB440W | All White |
| ELB440H | All Haze |
| ELB440HW | Haze with White Trim |
| ELB440BB | All Black |