

Birch™ 4" Square New Construction Plaster Frame



Features

- New Construction Plaster frame with hanger bars
- Encased Quick Connect for easy module installation and maintenance
- Optional 90 minutes Emergency Battery Backup

Technical Details

Construction: Constructed from 16 gauge galvanized steel for large architectural applications

Installation: Designed for commercial buildings. Easily installed with included hanger bars. Light engine installed into frame

Junction Box: Positioned to accommodate straight conduit runs. 1/2" trade size conduit knockouts and pry-out knockout slots for easy romex installation

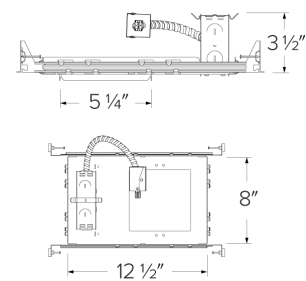
Warranty: ELCO Products are built to last. 5-year Limited warranty

Options



Optional Battery Backup

Dimensions



Product Numbers

Item	Description
ELB44SQPF	Square New Construction Plaster Frame
ELB44SQPF-EM5	Square New Construction Plaster Frame with Emergency Battery Backup

Product Number Builder

Example: ELB44SQPF

Birch™ 4" Square New Construction Plaster Frame

Optional

ELB44SQPF

No Battery Backup
-EM5 Emergency Battery Backup

Compatible Products

For use with 4" Birch Square Frames



Birch™ LED Modules



Birch™ Pro LED Module with 5-CCT Switch (750 lm - 1500 lm)



CAT NO.	COLOR TEMPERATURE	SPECIFICATIONS
ELB15RCT5ICA	5-CCT Switch 2700K, 3000K, 3500K, 4000K, 5000K	<ul style="list-style-type: none">• IC Rated, for use in IC and Non-IC applications• 750 lm / 1000 lm / 1500 lm (10W / 12W / 20W)• Beam Angle adjustment from 25°-45°• 120/277V input with 0-10V dimming

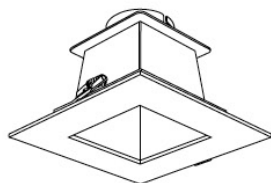


Birch™ High Lumen LED Module (1250 lm - 3000 lm)



CAT NO.	COLOR TEMPERATURE	SPECIFICATIONS
ELB30R30	3000K	<ul style="list-style-type: none">• Non-IC, for use in Non-IC applications• 1250 lm / 2000 lm / 3000 lm (13W / 20W / 35W)• Beam Angle adjustment from 22°-50°• 120/277V input with 0-10V dimming
ELB30R35	3500K	
ELB30R40	4000K	

4" Birch™ Twist-On Trims



4" Square Reflector Trim

CAT NO.	SPECIFICATIONS
ELB440W	All White
ELB440H	All Haze
ELB440HW	Haze with White Trim
ELB440BB	All Black