

# Birch™ 4" New Construction Architectural Frame



## Features

- Encased Quick Connect for easy module installation and maintenance
- Optional 90 minutes Emergency Battery Backup
- Hanger bars required (sold separately)

## Technical Details

**Construction:** Constructed from 16 gauge galvanized steel for large architectural applications

**Installation:** Designed for commercial architectural buildings. Easily installed with hanger bars (sold separately). Light engine installed into frame

**Junction Box:** Positioned to accommodate straight conduit runs. 1/2" trade size conduit knockouts and pry-out knockout slots for easy romex installation

**Hanger Bars:** Hanger bars sold separately as FB27 - Set of two 27" hanger bars for wood construction or CH26 - Set of two 26" C-Channel hanger bars for T-Bar Ceiling

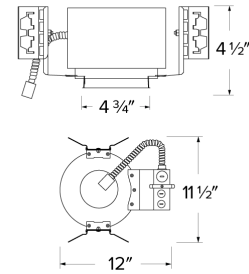
**Warranty:** ELCO Products are built to last. 5-year Limited warranty

## Options



**Optional Battery Backup**

## Dimensions



## Product Number

Item	Description
ELB4EH	New Construction Architectural Frame

## Product Number Builder Example: ELB4EH

Birch™ 4" New Construction Architectural Frame

**ELB4EH**

Optional

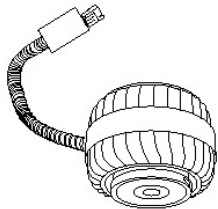
No Battery Backup  
**-EM5** Emergency Battery Backup

# Compatible Products



For use with Birch™ Architectural Frames

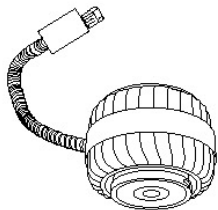
## Birch™ LED Modules



**Birch™ Pro** LED Module with 5-CCT Switch (750 lm - 1500 lm)



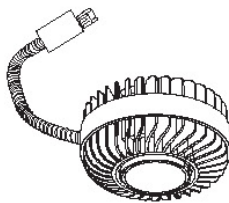
CAT NO.	COLOR TEMPERATURE	SPECIFICATIONS
ELB15RCT5ICA	5-CCT Switch 2700K, 3000K, 3500K, 4000K, 5000K	<ul style="list-style-type: none"> <li>• IC Rated, for use in IC and Non-IC applications</li> <li>• 750 lm - 1500 lm (10W - 20W)</li> <li>• Beam Angle adjustment from 25°-45°</li> <li>• 120/277V input with 0-10V dimming</li> </ul>



**Birch™ High Lumen** LED Module (1250 lm - 3000 lm)



CAT NO.	COLOR TEMPERATURE	SPECIFICATIONS
ELB30R30	3000K	<ul style="list-style-type: none"> <li>• Non-IC, for use in Non-IC applications</li> <li>• 1250 lm - 3000 lm (13W - 30W)</li> <li>• Beam Angle adjustment from 22°-50°</li> <li>• 120/277V input with 0-10V dimming</li> </ul>
ELB30R35	3500K	
ELB30R40	4000K	



**Birch™ High Lumen** LED Module (3200 lm - 5000 lm)



CAT NO.	COLOR TEMPERATURE	SPECIFICATIONS
ELB50R30	3000K	<ul style="list-style-type: none"> <li>• Non-IC, for use in Non-IC applications</li> <li>• 3200 lm - 5000 lm (32W - 55W)</li> <li>• Beam Angle adjustment from 22°-50°</li> <li>• 120/277V input with 0-10V dimming</li> <li>• Works with 6" &amp; 8" Trims (ELB610 &amp; ELB810 only)</li> </ul>
ELB50R35	3500K	
ELB50R40	4000K	

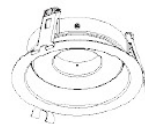
## 4", 6", & 8" Birch™ Twist-On Trims



4" Round Reflector



6" Round Reflector



6" Round Adjustable Reflector



8" Round Reflector

CAT NO.	SPECIFICATIONS	CAT NO.	SPECIFICATIONS	CAT NO.	SPECIFICATIONS	CAT NO.	SPECIFICATIONS
ELB410W	All White	ELB610W	All White	ELB629W	All White	ELB810W	All White
ELB410BB	All Black	ELB610BB	All Black	ELB629B	All Black	ELB810H	All Haze (Semi-Specular)
ELB410H	All Haze (Semi-Specular)	ELB610H	All Haze (Semi-Specular)	ELB629H	All Haze (Semi-Specular)		
ELB410HW	Haze/White Trim	ELB610HW	Haze/White Trim				

• Not compatible with ELB50R Module Series

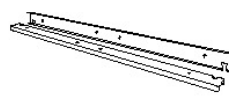
• Not compatible with ELB50R Module Series

## Hanger Bars for Birch™ Architectural Frames



27" Flat Hanger Bars

CAT NO.	SPECIFICATIONS
FB27	For wood construction, Set of 2



26" C-Channel Hanger Bars

CAT NO.	SPECIFICATIONS
CH26	For T-Bar Ceilings, Set of 2