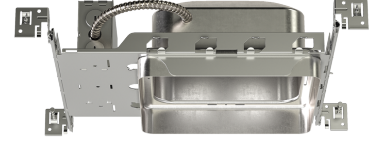


# 8" Incandescent Square Housing



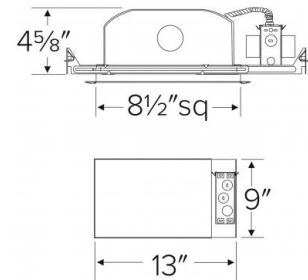
## Features

- Square Housing, Airtight (with lensed trims).
- Single wall aluminum construction.
- Integral thermal protector.
- Supplied with captive bar hangers for 24" max joist spacing.
- Lamp: 120V 75W MAX A19.
- cUL listed for Damp Location and for Feed Through.

## Specifications

<b>Wattage</b>	75W
<b>Voltage</b>	120V
<b>Lamp Type</b>	Medium Base (E26)
<b>Damp Location</b>	Listed

## Dimensions



## Technical Details

### Construction:

- Housing adjusts in frame to accommodate up to 1 1/4" ceiling thickness.
- Airtight housing with lensed trims to restrict airflow in accordance with ASTM E-283 air-tight requirements.
- Aluminum housing for greater heat dissipation. Stamped galvanized steel frame.

**Installation:** Designed for ceiling plenums where 2x8 joists or taller are used. High strength hanger bars can easily be nailed to joists. Maximum hole cutout is 8 1/2". Suitable for T-grid and drop ceiling applications. See installation sheet for detailed information.

**Junction Box:** Positioned to accommodate straight conduit runs. Seven 1/2" trade size pryout conduit knockouts, 4 Romex pryouts with strain relief.

**Hanger Bars:** Pre-installed hanger bars with True Nail facilitate easy installation in regular lumber, engineered lumber, and laminated beams. Integral T-bar slots for easy installation in T-grids. Spans up to 24" and can be repositioned 90°. Score lines allow for tool-free hanger bar size reduction. Integral leveling flange allows for single-person installation while aligning the housing with the joists.

**Electrical:** Input Voltage: 120V AC. Thermally protected against improper lamping.

**Trims:** Compatible with EL10W, EL11W, EL15W, EL88130W.

**Lamp:** Designed for use with Medium Base (E26) PAR lamps up to 75W.

### Listings:

- cUL Listed for Damp Location.
- cUL Listed for Feed Through.

**Warranty:** ELCO Lighting warrants products will be free from defects in materials and workmanship for a period of 3 years.

## Product Number

Item	Lamp type	Watts	Voltage
EL8SQ	Medium Base (E26)	75W	120V

# Compatible Products

For use with 8" Square E26 Base Housings

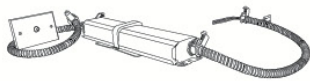
## 8" Square LED Retrofit Insert



Square LED Insert

CAT NO.	SPECIFICATIONS
EL88130W	19W, 1460 lm, 3000K, 120/277V, Triac/ELV
EL88140W	19W, 1520 lm, 4000K, 120/277V, Triac/ELV

## 8" Accessories



Emergency Battery Backup

CAT NO.	SPECIFICATIONS
KEM-LD5	8W, 120/277V



Fire Cover

CAT NO.	SPECIFICATIONS
FIRECVR	9 3/4" H x 17" O.D.



Fire Enclosure

CAT NO.	SPECIFICATIONS
FIREENCL	20 3/8" L x 14 3/8" W
FIREENCL-S	Shallow, 16" L x 14 3/8" W



Mica Fire Tape

CAT NO.	SPECIFICATIONS
FIRETAPE	3/4" W x 16' L