

# 6" 0-10V LED Shallow Fire Rated ICA New Construction Housing

6" 0-10V 2-Hour fire rated new construction LED shallow housing. Compatible with 6" 0-10V LED inserts and 0-10V Koto™ Module.



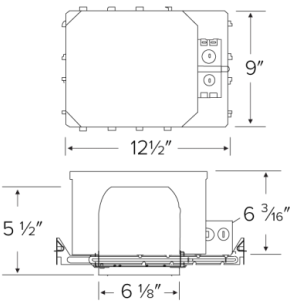
## Features

- 24W MAX.
- 2-Hour Fire Rated housing
- Wired for 0-10V Dimming
- IC Airtight Rated for direct contact with insulation
- 120/277V Input , 60Hz
- Meets Title 24 High Efficacy requirements
- Housing Meets Restricted Air Flow requirements (per ASTM E-283)
- cUL Listed for damp locations
- cUL Listed for wet locations
- Heigh: 6 3/16"

## Specifications

Wattage	24W
Voltage	120/277V
Dimmable	0-10V/Triac/ELV
Damp Location Listed	

## Dimensions



## Technical Details

### Construction:

- Double wall IC rated for direct contact with insulation. For use in IC and non-IC conditions.
- Housing adjusts in frame to accommodate up to 1 1/2" ceiling thickness.
- Airtight housing with gasket to restrict airflow in accordance with ASTM E-283 air-tight requirements.

### Installation:

- Designed for ceiling plenums where 2x8 joists or taller are used.
- High strength hanger bars can easily be nailed to joists.
- Suitable for T-grid and drop ceiling applications.
- See installation sheet for detailed information.

**Junction Box:** Positioned to accommodate straight conduit runs. Two 3/4" knockouts, Seven 1/2" trade size conduit knockouts, One 3/8" knockout. Four Pry-out knockout slots for easy romex installation.

**Emergency Battery Pack:** Optional 90 minute battery pack available with test indicator switch. Note that double wall housings require Access From Above Ceiling for Battery Maintenance.

**Hanger Bars:** Pre Installed hanger bars with True Nail easy installation in regular lumber, engineered lumber, and Laminated Beams. Integral T-bar slots for easy installation in T-Bars. Spans up 24" and can be repositioned 90°. Score lines allow for tool-free hanger bar size reduction. Integral leveling flange allows for single-person installation while easily aligning the housings with the joists.

**Lamp:** Designed for use with ELCO 6" 0-10V LED inserts and 0-10V Koto™ Module.

**Listings:** cUL Listed for Damp Location and for Wet Location with select trims. cUL Listed for Direct Contact with Insulation and Combustible Material. cUL Listed for Feed Through.

## Product Number

Item	Watts	Voltage	Dimming
EL75FICDXAS	24W	120/277V	0-10V/Triac/ELV

# Compatible Products

For use with Dedicated 6" IC LED Housings



## 6" Ply™ 120/277V LED Inserts



Round Insert with 5-CCT  
and 3-Lumen Switch

**EL685CT5D**

Finishes:  
(W, BB, CW, HW)



Round Insert

**EL695**

Finishes:  
(DCW)

\*Finishes: **W** - All White, **BB** - All Black, **H** - All Haze, **HW** - Haze w/White Ring

*\*Must be used with PLY™ Housings for 0-10V dimmability (EL770ICDXA, EL770RICDXA, EL76FICDXA, EL760ICDXA, EL760RICDXA).  
With non-ply housing this is non-dimmable, 120-277V input only.*

## 6" Ply™ 120/277V Adjustable LED Inserts



Round Adjustable Pull Down

**EL697**

Finishes:  
(DXW, DXB, DXBZ)

### ACCESSORIES



Interchangeable Lens  
(For EL697 Series only)

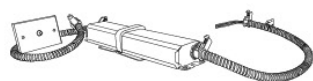
**EP710C** 20° Beam  
**EP712C** 60° Beam

### PRODUCT NUMBER BUILDER

6" 120/277V Adjustable LED Inserts	Style	Color Temperature	Finish
<b>EL6</b>	<b>97</b> Round Adjustable	<b>27D</b> 2700K (850 lm) <b>30D</b> 3000K (900 lm)	<b>DXW</b> All White <b>DXB</b> All Black <b>DXBZ</b> All Bronze

*\*Must be used with PLY™ Housings for 0-10V dimmability (EL770ICDXA, EL770RICDXA, EL76FICDXA, EL760ICDXA, EL760RICDXA).  
With non-ply housing this is non-dimmable, 120-277V input only.*

## 6" Accessories



Emergency Battery Backup



Fire Cover



Fire Enclosure



Mica Fire Tape

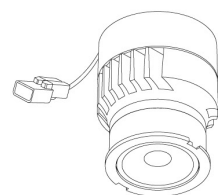
CAT NO.	SPECIFICATIONS	CAT NO.	SPECIFICATIONS	CAT NO.	SPECIFICATIONS	CAT NO.	SPECIFICATIONS
KEM-LD5	8W, 120/277V	FIRECVR	9 3/4" H x 17" O.D.	FIREENCL	20 3/8" L x 14 3/8" W	FIRETAPE	3/4" W x 16' L
				FIREENCL-S	Shallow, 16" L x 14 3/8" W		

# Compatible Products

For use with Dedicated 6" 0-10V Koto ICAD LED Housings



## 0-10V Koto™ LED Module



0-10V Koto™  
LED Module  
ELK10DX

PRODUCT NUMBER BUILDER				
0-10V Koto™ LED Module	Lumens	Voltage	Color Temperature	Beam Angle
ELK				
	10 1000 lm	DX 120/277V	27 2700K	(blank) 38° lens (Standard)
			30 3000K	-S 18° lens
			35 3500K	-N 25° lens
			40 4000K	-W 60° lens
			SD Sunset Dimming	

### ACCESSORIES



#### Lens

EP731C 18° Lens  
EP732C 25° Lens  
EP733C 38° Lens  
EP734C 60° Lens

\*EP732C, EP733C, EP734C Included



#### Snoot

L50W White  
L50B Black



#### Secondary Optics

L45 Hex Louver  
L46 Linear Lens  
L47 Spread Louver  
L49 Frosted Lens  
L51 Color Shifter

## 6" Twist-On Trims



Round Deep Reflector

ELK6418

Finishes:

(W, BB, BZ, H)



Round Reflector

ELK610

Finishes:

(WW, BB, BZBZ, BW,  
CC, CW, CN, HW)



Adj. Round Reflector

ELK629

Finishes:

(WW, BB, BZBZ,  
BW, CW, HW)



Adj. Round Baffle

ELK693

Finishes:

(WW, BB, BZBZ, BW)



Adj. Slot Aperture

ELK6420

Finishes:

(W)

## 6" Unique™ Twist-On Trims

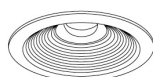


Round Reflector

ELK6710

Finishes:

(W, B, BZ)



Round Baffle

ELK6713

Finishes:

(W, BZ)



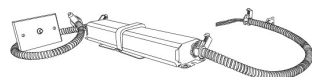
Round Wall Wash

ELK6715

Finishes:

(W, BZ)

## 6" Accessories



Emergency Battery Backup

CAT NO.	SPECIFICATIONS
---------	----------------

KEM-LD5	8W, 120/277V
---------	--------------

\* Requires access from above



Fire Cover

CAT NO.	SPECIFICATIONS
---------	----------------

FIRECVR	9 3/4" H x 17" O.D.
---------	---------------------

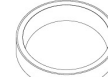


Fire Enclosure

CAT NO.	SPECIFICATIONS
---------	----------------

FIREENCL	20 3/8" L x 14 3/8" W
----------	-----------------------

FIREENCL-S	Shallow, 16" L x 14 3/8" W
------------	----------------------------



Mica Fire Tape

CAT NO.	SPECIFICATIONS
---------	----------------

FIRETAPE	3/4" W x 16' L
----------	----------------