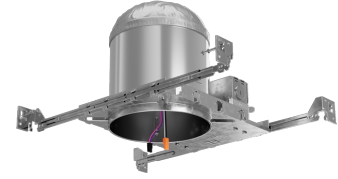


6" 0-10V IC New Construction Dedicated LED Housing



Features

- Wired for 0-10V Dimming
- Single Wall IC Airtight rated for direct contact with insulation
- 120/277V Input
- Meets restricted air flow requirements (per ASTM E-283)
- cUL listed for direct contact with insulation
- cUL listed for wet locations with wet location inserts
- cUL listed for feed through
- CA Title 24 compliant

Specifications

Voltage	120/277V
Dimmable	0-10V/Triac/ELV

Options



Emergency Backup

Technical Details

Construction: Single wall IC rated for direct contact with insulation, for use in IC or non-IC conditions. Housing adjusts in frame to accommodate up to 1 1/4" ceiling thickness. Airtight housing with gasket to restrict airflow in accordance with ASTM E-283 air-tight requirements. Steel housing for greater heat dissipation. Stamped galvanized steel frame.

Installation: Designed for ceiling plenums where 2x6 joists or taller joists are used. High strength hanger bars can easily be nailed to joists. Maximum hole cutout is 6 1/4". Suitable for T-grid and drop ceiling applications. See installation sheet for detailed information.

Junction Box: Positioned to accommodate straight conduit runs. Seven 1/2" trade size conduit knockouts, four 3/4" knockouts. Pry-out knockout slots. 4 Romex pryouts with strain relief.

Hanger Bars: Pre-installed hanger bars with TrueNail facilitate easy installation in regular lumber, engineered lumber, and laminated beams. Integral T-bar slots for easy installation in T-bars. Spans up to 24" and can be repositioned 90°. Score lines allow for tool-free hanger bar size reduction. Integral leveling flange allows for single-person installation while aligning the housings with the joists.

Electrical: Input Voltage: 120/277V. Inherently protected. Fixture rated for 24W MAX. LED insert

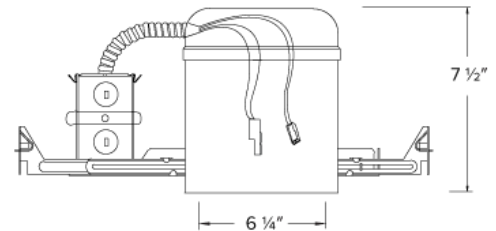
Trims: Compatible with ELCO 6" 0-10V LED Inserts and 0-10V Koto™ Module.

Dimmability: Dimmability based on insert used.

Listings: cUL Listed for Damp Location. cUL Listed for Wet Location with select trims. cUL Listed for Feed Through. cUL Listed for Direct Contact with Insulation and Combustible Material. Airtight per ASTM E-283. JA8-2016-E Title 24 Compliant.

Warranty: ELCO Lighting warrants products will be free from defects in materials and workmanship for a period of 5 years.

Dimensions



Product Numbers

Item	Description	Voltage	Dimming
EL770ICDXA		120/277V	0-10V/Triac/ELV
EL770ICDXA-EM5	Emergency Backup	120/277V	0-10V/Triac/ELV

Compatible Products

For use with Dedicated 6" IC LED Housings



6" Ply™ 0-10V Dimmable, 120/277V LED Inserts



Round Insert

EL695

Finishes:

(DW, DHW, DCW)

PRODUCT NUMBER BUILDER			
6" 120/277V LED Inserts	Color Temperature		Finish
EL695			
	30	3000K (1350 lm)	DW All White
	35	3500K (1425 lm)	DHW Haze w/White Ring
	40	4000K (1500 lm)	DCW Chrome w/White Ring

6" Ply™ 0-10V Dimmable, 120/277V Adjustable LED Inserts



Round Adjustable Pull Down

EL697

Finishes:

(DXW, DXB, DXBZ, DXN)

ACCESSORIES



Interchangeable Lens
(For EL697 Series only)

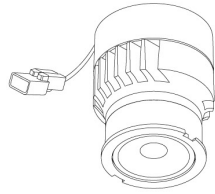
EP710C 20° Beam
EP712C 60° Beam

PRODUCT NUMBER BUILDER			
6" 120/277V Adjustable LED Inserts	Style	Color Temperature	Finish
EL6			
	97 Round Adjustable	27D 2700K (850 lm)	DXW All White
		30D 3000K (900 lm)	DXB All Black
			DXBZ All Bronze
			DXBN All Nickel

Compatible Products

For use with Dedicated 6" 0-10V Koto ICAD LED Housings

0-10V Koto™ LED Module

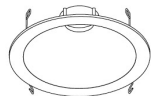


0-10V Koto™
LED Module
ELK10DX

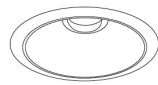
PRODUCT NUMBER BUILDER				
0-10V Koto™ LED Module	Lumens	Voltage	Color Temperature	Beam Angle
ELK				
	10 1000 lm	DX 120/277V	27 2700K	(blank) 38° lens (Standard)
			30 3000K	-S 18° lens
			35 3500K	-N 25° lens
			40 4000K	-W 60° lens
			SD Sunset Dimming	

ACCESSORIES	
Lens	Snoot
EP731C 18° Lens	L50W White
EP732C 25° Lens	L50B Black
EP733C 38° Lens	
EP734C 60° Lens	
<small>*EP732C, EP733C, EP734C Included</small>	
Secondary Optics	
L45 Hex Louver	
L46 Linear Lens	
L47 Spread Louver	
L49 Frosted Lens	
L51 Color Shifter	

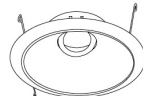
6" Twist-On Trims



Round Deep Reflector
ELK6418
Finishes:
(W, BB, BZ, H)



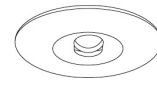
Round Reflector
ELK610
Finishes:
(WW, BB, BZBZ, BW, CC, CW, CN, HW)



Adj. Round Reflector
ELK629
Finishes:
(WW, BB, BZBZ, BW, CW, HW)

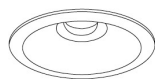


Adj. Round Baffle
ELK693
Finishes:
(WW, BB, BZBZ, BW)

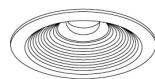


Adj. Slot Aperture
ELK6420
Finishes:
(W)

6" Unique™ Twist-On Trims



Round Reflector
ELK6710
Finishes:
(W, B, BZ)

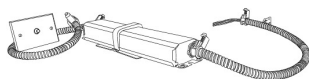


Round Baffle
ELK6713
Finishes:
(W, BZ)



Round Wall Wash
ELK6715
Finishes:
(W, BZ)

6" Accessories



Emergency Battery Backup

CAT NO.	SPECIFICATIONS
KEM-LD5	8W, 120/277V

* Requires access from above



Fire Cover

CAT NO.	SPECIFICATIONS
FIRECVR	9 3/4" H x 17" O.D.



Fire Enclosure

CAT NO.	SPECIFICATIONS
FIREENCL	20 3/8" L x 14 3/8" W
FIREENCL-S	Shallow, 16" L x 14 3/8" W



Mica Fire Tape

CAT NO.	SPECIFICATIONS
FIRETAPE	3/4" W x 16' L