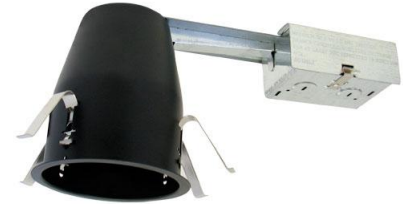


# 4" Remodel Non-IC Housing for GU10 Base MR16



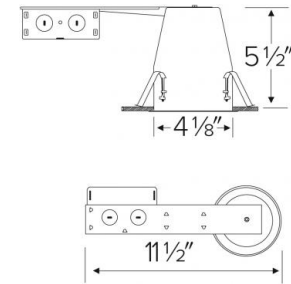
## Features

- Single Wall Remodel Airtight Housing with thermal protector.
- Flicker Free LED Dimming.
- Lamp: 120V, 50W MAX MR16 GU10 LED (not included).
- Lamp Holder: Twist-and-lock GU10 MR16 lamp holder.
- Trims sold separately.

## Specifications

<b>Wattage</b>	50W
<b>Voltage</b>	120V
<b>Lamp Type</b>	GU10

## Dimensions



## Technical Details

### Construction:

- Single Wall Airtight Remodel Housing with thermal protector.
- Housing adjusts in frame to accommodate up to 1 1/4" ceiling thickness.
- Airtight housing with gasket to restrict airflow in accordance with ASTM E-283 air-tight requirements.
- Steel housing for greater heat dissipation. Stamped galvanized steel frame.

**Installation:** Designed for ceiling plenums where 2x6 joists or taller joists are used. Maximum hole cutout is 4 1/4". Remodel clips secure housing, suitable for T-grid and drop ceiling applications. See installation sheet for detailed information.

### Electrical:

- Input Voltage: 120V AC.
- Thermally protected against improper lamping.

**Trims:** Compatible with ELCO 4" MR16 trims.

### Dimmability:

- Dimmability based on lamp.

**Lamp:** Designed for use with GU10 MR16 LED lamps.

### Listings:

- UL Listed for Damp Location.
- UL Listed for Wet Location with select trims.
- UL Listed for Feed Through.
- Airtight per ASTM E-283.
- Install a JA8-2016-E lamp/luminaire for Title 24 Compliance.

**Warranty:** ELCO Lighting warrants products will be free from defects in materials and workmanship for a period of 3 years.

## Product Numbers

Item	Lamp type	Watts	Voltage
EL49RA	GU10	50W	120V