

4" Reflector with Adjustable Socket Holder Bracket



Features

- Reflector with Bracket, 25° tilt.
- Lamp: 50W PAR20, 55W PAR16.
- O.D.: 4 3/4".

Technical Details

Construction:

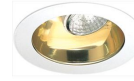
- Meticulously manufactured trim with a powder coated or anodized finish.
- Integral gimbal ring holds lamp and allows for 25° internal adjustability while keeping a flush look on the ceiling.

Installation: Clips securely mount trim into the housing and keeps ring flush with ceiling.

Compatible Housing: Compatible with 4" Line Voltage IC and Non-IC versions.

Lamp: Compatible with Medium base (E26) PAR type.

Options



Gold w/White Trim **Black w/White Trim**

All White



Chrome w/White Trim

Product Numbers

Item	Finish
EL977G	Gold with White Trim
EL977B	Black with White Trim
EL977W	All White
EL977C	Chrome with White Trim

Product Number Builder Example: EL977G

4" Reflector with Bracket

Finish

EL977

- W** All White
- B** Black with White Trim
- G** Gold with White Trim
- C** Chrome with White Trim

Compatible Products

For use with 4" Trims for PAR Lamps

4" Line Voltage ICA Housings



4" Airtight IC Housing
Double Wall Construction

CAT NO.	SPECIFICATIONS
EL99ICA	Lamp: 50W MAX.



4" Airtight Housing
New Construction

CAT NO.	SPECIFICATIONS
EL99A	Lamp: 50W MAX.



4" Airtight IC Housing
New Construction

CAT NO.	SPECIFICATIONS
EL99LDICA	Lamp: LED 12W MAX.



4" Airtight IC Housing with GU24 Base Socket
New Construction

CAT NO.	SPECIFICATIONS
EL99ICA-G24	Lamp: 18W MAX.



4" Airtight IC 2-Hour Fire Rated Housing
New Construction

CAT NO.	SPECIFICATIONS
EL99FICA	Lamp: 35W MAX.

4" Accessories



Fire Cover

CAT NO.	SPECIFICATIONS
FIRECVR	9 3/4" H x 17" O.D.



Fire Enclosure

CAT NO.	SPECIFICATIONS
FIREENCL	20 3/8" L x 14 3/8" W
FIREENCL-S	Shallow, 16" L x 14 3/8" W



Mica Fire Tape

CAT NO.	SPECIFICATIONS
FIRETAPE	3/4" W x 16' L