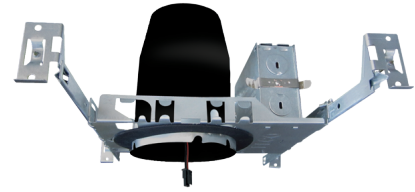


4" Recessed New Construction Housing for Commercial Construction Koto™ LED Engine



Features

- Koto™ Commercial Housing: 120/277V 0-10V/Triac/ELV or 120V Triac/ELV with optional Emergency Battery Backup.
- Must be used with Commercial Construction Koto™ LED Light Engines (ELK19 or ELK21 Series).
- Lumen output based on module

Specifications

Lumens	850/1100 lm
Voltage	120/277V or 120V
Dimmable	Triac/ELV, 0-10V/Triac/ELV

Product Numbers

Item	Description	Lumens	Voltage	Dimming
E4LK88ICA		850/1100 lm	120V	Triac/ELV
E4LK88ICAD		850/1100 lm	120/277V	0-10V/Triac/ELV
E4LK88ICAD-EM1	with Emergency Battery Back-up	850/1100 lm	120/277V	0-10V/Triac/ELV

Technical Details

Lamp: Designed for use with ELCO Commercial Construction Koto™ LED Light Engines (ELK19 or ELK21 Series)

Construction:

- Single wall IC rated for direct contact with insulation, for use in IC or non-IC conditions.
- Housing adjusts in frame to accommodate up to 1 1/2" ceiling thickness.
- Airtight housing with gasket to restrict airflow in accordance with ASTM E-283 air-tight requirements.

Installation: Designed for ceiling plenums where 2x6 joists or taller joists are used. High strength hanger bars can easily be nailed to joists. Maximum hole cutout is 4 1/4". Suitable for t-grid and drop ceiling applications. See installation sheet for detailed information.

Junction Box: Positioned to accommodate straight conduit runs. Seven 1/2" trade size conduit knockouts, four 3/4" knockouts. Pry-out knockout slots. 4 Romex pryouts with strain relief.

Hanger Bars: Pre-installed hanger bars with True Nail facilitate easy installation in regular lumber, engineered lumber, and laminated beams. Integral T-bar slots for easy installation in T-bars. Spans up to 24" and can be repositioned 90°. Score lines allow for tool-free hanger bar size reduction. Integral leveling flange allows for single-person installation while aligning the housings with the joists.

Electrical:

- Input Voltage: 120/277V or 120V
- High efficiency driver with power factor > 0.9

Dimmability:

- Triac/ELV/0-10V or Triac/ELV

Listings:

- UL Listed for Damp Location.
- UL Listed for Wet Location with select trims.
- UL Listed for Feed Through.
- UL Listed for Direct Contact with Insulation.
- Airtight per ASTM E-283.
- Install a JA8-2016-E lamp/luminaire for Title 24 Compliance.

Warranty: ELCO Lighting warrants products will be free from defects in materials and workmanship for a period of 5 years.