

4" Phenolic Step Baffle Trim



Features

- Phenolic Step, Metal Ring.
- Lamp: 32W MAX CFL (PL-T) or 50W MAX PAR20 or R20.
- O.D.: 4 3/4".

Technical Details

Construction:

- Meticulously manufactured trim with a powder coated or anodized finish.
- Baffle helps reduce glare.

Installation: Clips securely mount trim into the housing and keeps ring flush with ceiling.

Compatible Housing: Compatible with 4" Line Voltage IC and Non-IC versions.

Lamp: Compatible with Medium base (E26) PAR type.

Options



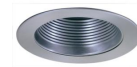
All White



Black w/White Trim



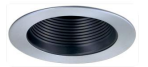
All Bronze



All Nickel



All Black



Black w/Nickel Ring



White w/Nickel Trim



Nickel w/White Trim



Black w/Bronze Trim



Bronze w/White Trim



White w/Bronze Trim

Product Number

Item	Finish
EL993WBZ	White with Bronze Trim

Product Number Builder

Example: **EL993B**

4" Phenolic Baffle Metal Trim

Finish

EL993

- B** Black with White Trim
- BZ** All Bronze
- W** All White
- N** All Nickel
- BB** All Black
- BN** Black with Nickel Trim
- WN** White with Nickel Trim
- NW** Nickel with White Trim
- BBZ** Black with Bronze Trim
- BZW** Bronze with White Trim
- WBZ** White with Bronze Trim

Compatible Products

For use with 4" Trims for PAR Lamps

4" Line Voltage ICA Housings



4" Airtight IC Housing
Double Wall Construction

CAT NO.	SPECIFICATIONS
EL99ICA	Lamp: 50W MAX.



4" Airtight Housing
New Construction

CAT NO.	SPECIFICATIONS
EL99A	Lamp: 50W MAX.



4" Airtight IC Housing
New Construction

CAT NO.	SPECIFICATIONS
EL99LDICA	Lamp: LED 12W MAX.



4" Airtight IC Housing with GU24 Base Socket
New Construction

CAT NO.	SPECIFICATIONS
EL99ICA-G24	Lamp: 18W MAX.



4" Airtight IC 2-Hour Fire Rated Housing
New Construction

CAT NO.	SPECIFICATIONS
EL99FICA	Lamp: 35W MAX.

4" Accessories



Fire Cover

CAT NO.	SPECIFICATIONS
FIRECVR	9 3/4" H x 17" O.D.



Fire Enclosure

CAT NO.	SPECIFICATIONS
FIREENCL	20 3/8" L x 14 3/8" W
FIREENCL-S	Shallow, 16" L x 14 3/8" W



Mica Fire Tape

CAT NO.	SPECIFICATIONS
FIRETAPE	3/4" W x 16' L