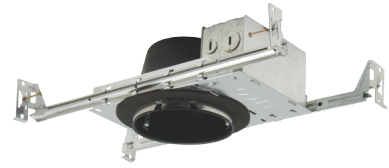


4" New Construction Shallow Housing

4" New Construction Shallow Housing featuring a twist and lock socket for use with 120V GU10 MR16 LED lamps.



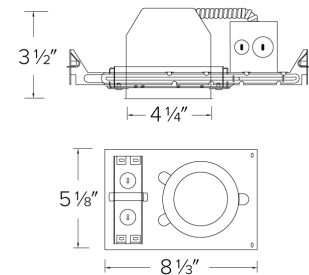
Features

- Single Wall IC Construction, for use in insulated ceilings.
- Flicker free LED dimming.
- Lamp: 120V, MR16 GU10 LED (not included).
- Lamp Holder: Twist-and-lock GU10 MR16 lamp holder.
- Trims sold separately.

Specifications

Wattage	12W
Voltage	120V
Lamp Type	GU10
Wet Location	Listed with Shower Trims
Damp Location	Listed

Dimensions



Technical Details

Construction:

- Single wall IC rated for direct contact with insulation, for use in IC or Non-IC conditions.
- Housing adjusts in frame to accommodate up to 1 1/4" ceiling thickness.
- Airtight housing with gasket to restrict airflow in accordance with ASTM E-283 air-tight requirements.
- Steel housing for greater heat dissipation. Stamped galvanized steel frame.

Installation: Designed for ceiling plenums where 2x4 joists or taller joists are used. High strength hanger bars can easily be nailed to joists. Maximum hole cutout is 4 1/4". Suitable for T-grid and drop ceiling applications. See installation sheet for detailed information.

Junction Box: Positioned to accommodate straight conduit runs. Seven 1/2" trade size conduit knockouts, four 3/4" knockouts with pry-out knockout slots. 4 Romex pryouts with strain relief.

Hanger Bars: Pre-installed hanger bars with True Nail facilitate easy installation in regular lumber, engineered lumber, and laminated beams. Integral T-bar slots for easy installation in T-bars. Spans up to 24" and can be repositioned 90°. Score lines allow for tool-free hanger bar size reduction. Integral leveling flange allows for single-person installation while aligning the housings with the joists.

Electrical: Input Voltage: 120V AC. Thermally protected against improper lamping.

Trims: Compatible with ELCO 4" MR16 Trims: EL2488, EL2440, EL2443, EL1488, EL1433, EL2482, EL2483, EL2484, EL1415 EL1421.

Dimmability: Dimmability based on lamp.

Lamp: Designed for use with GU10 MR16 LED lamps.

Listings:

- cUL Listed for Damp Location.
- cUL Listed for Wet Location with select trims.
- cUL Listed for Feed Through.
- cUL Listed for Direct Contact with Insulation and Combustible Material.
- Airtight per ASTM E-283.
- Install a JA8-2016-E lamp/luminaire for Title 24 Compliance.

Warranty: ELCO Lighting warrants products will be free from defects in materials and workmanship for a period of 3 years.

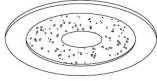
Product Numbers

Item	Lamp type	Watts	Voltage
EL49LDICAS	GU10	12W	120V

Compatible Products

For use with 4" IC Airtight GU10 Housings

4" MR16 Trims



Clear Reflector Shower Trim with Frosted Glass Pinhole

CAT NO.	SPECIFICATIONS
EL1415W	White
EL1415B	Black
EL1415G	Gold
EL1415N	Nickel
EL1415BZ	Bronze
EL1415SH	Lexan



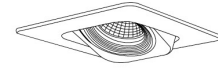
Gimbal Ring Baffle Trim (25°)

CAT NO.	SPECIFICATIONS
EL1433W	All White
EL1433B	White/Black Ring



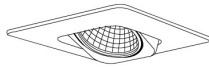
Die-Cast Adjustable Spot Trim (0-30°)

CAT NO.	SPECIFICATIONS
EL1488W	All White
EL1488B	All Black
EL1488BZ	All Bronze



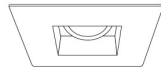
Square Adjustable Gimbal Baffle Trim (25°)

CAT NO.	SPECIFICATIONS
EL2440W	All White
EL2440B	All Black
EL2440BZ	All Bronze



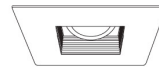
Square Adjustable Gimbal Trim (25°)

CAT NO.	SPECIFICATIONS
EL2443W	All White
EL2443B	All Black



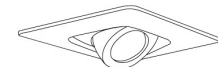
Steel Construction Square Adjustable Reflector Trim

CAT NO.	SPECIFICATIONS
EL2482W	All White
EL2482CN	Clear/White Ring



Die-Cast Aluminum Square Adjustable Baffle Trim

CAT NO.	SPECIFICATIONS
EL2484W	All White
EL2484B	All Black
EL2484BZ	All Bronze



Die-Cast Adjustable with Square Trim

CAT NO.	SPECIFICATIONS
EL2488W	All White
EL2488B	All Black
EL2488BZ	All Bronze



Adjustable Reflector Trim (25°)

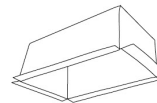
CAT NO.	SPECIFICATIONS
EL1421W	All White
EL1421WN	White/Nickel Ring
EL1421WBZ	White/Bronze Ring
EL1421B	Black/White Ring
EL1421BB	All Black
EL1421BN	Black/Nickel Ring
EL1421BZ	All Bronze
EL1421C	Chrome/White Ring
EL1421CN	Chrome/Nickel Ring
EL1421H	Haze/White Ring
EL1421DC	Clear/White Ring

Accessories



Fire Cover

CAT NO.	SPECIFICATIONS
FIRECVR	9 3/4" H x 17" O.D.



Fire Enclosure

CAT NO.	SPECIFICATIONS
FIREENCL	20 3/8" L x 14 3/8" W
FIREENCL-S	Shallow, 16" L x 14 3/8" W



Mica Fire Tape

CAT NO.	SPECIFICATIONS
FIRETAPE	3/4" W x 16' L