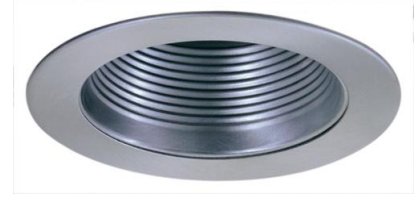


4" Metal Step Baffle Trim with Socket Bracket



Features

- Baffle Trim.
- Integral Socket Bracket to control lamp height.
- Lamp: 40W MAX A19 or R16, 50W MAX PAR20 or R20.
- O.D.: 4 3/4".

Technical Details

Construction:

- Meticulously manufactured trim with a powder coated or anodized finish.
- Baffle helps reduce glare.

Installation: Clips securely mount trim into the housing and keeps ring flush with ceiling.

Compatible Housing: Compatible with 4" Line Voltage IC and Non-IC versions.

Lamp: Compatible with Medium base (E26) PAR type.

Options



Black w/White Trim



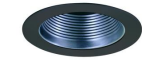
White



Nickel



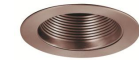
Black w/Nickel Trim



Nickel w/Black Trim



Nickel w/White Trim



Copper



Bronze

Product Number

Item	Finish
EL993KW	All White

Product Number Builder Example: EL993KB

4" Baffle Trim with Socket Bracket

Socket Bracket

Finish

EL993

K

B

no Socket Bracket

K Socket Bracket

B Black w/White Ring

W All White

N All Nickel

BN Black with Nickel Trim

NB Nickel with Black Trim

NW Nickel with White Trim

CP All Copper

BZ All Bronze

Compatible Products

For use with 4" Trims for PAR Lamps

4" Line Voltage ICA Housings



4" Airtight IC Housing
Double Wall Construction

CAT NO.	SPECIFICATIONS
EL99ICA	Lamp: 50W MAX.



4" Airtight Housing
New Construction

CAT NO.	SPECIFICATIONS
EL99A	Lamp: 50W MAX.



4" Airtight IC Housing
New Construction

CAT NO.	SPECIFICATIONS
EL99LDICA	Lamp: LED 12W MAX.



4" Airtight IC Housing with GU24 Base Socket
New Construction

CAT NO.	SPECIFICATIONS
EL99ICA-G24	Lamp: 18W MAX.



4" Airtight IC 2-Hour Fire Rated Housing
New Construction

CAT NO.	SPECIFICATIONS
EL99FICA	Lamp: 35W MAX.

4" Accessories



Fire Cover

CAT NO.	SPECIFICATIONS
FIRECVR	9 3/4" H x 17" O.D.



Fire Enclosure

CAT NO.	SPECIFICATIONS
FIREENCL	20 3/8" L x 14 3/8" W
FIREENCL-S	Shallow, 16" L x 14 3/8" W



Mica Fire Tape

CAT NO.	SPECIFICATIONS
FIRETAPE	3/4" W x 16' L