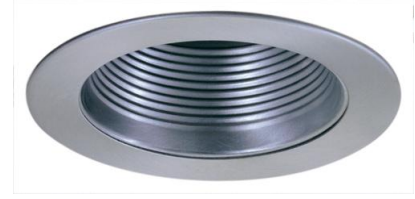


# 4" Metal Step Baffle Trim with Socket Bracket



## Features

- Baffle Trim.
- Integral Socket Bracket to control lamp height.
- Lamp: 40W MAX A19 or R16, 50W MAX PAR20 or R20.
- O.D.: 4 3/4".

## Technical Details

### Construction:

- Meticulously manufactured trim with a powder coated or anodized finish.
- Baffle helps reduce glare.

**Installation:** Clips securely mount trim into the housing and keeps ring flush with ceiling.

**Compatible Housing:** Compatible with 4" Line Voltage IC and Non-IC versions.

**Lamp:** Compatible with Medium base (E26) PAR type.

## Options



**Black w/White Trim**



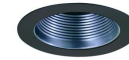
**White**



**Nickel**



**Black w/Nickel Trim**



**Nickel w/Black Trim**



**Nickel w/White Trim**



**Copper**



**Bronze**

## Product Number

Item	Finish
<b>EL993KNB</b>	Nickel with Black Trim

## Product Number Builder Example: **EL993KB**

4" Baffle Trim with Socket Bracket

Socket Bracket

Finish

**EL993**

**K**

**B**

no Socket Bracket

**K** Socket Bracket

**B** Black w/White Ring

**W** All White

**N** All Nickel

**BN** Black with Nickel Trim

**NB** Nickel with Black Trim

**NW** Nickel with White Trim

**CP** All Copper

**BZ** All Bronze

# Compatible Products

For use with 4" Trims for PAR Lamps

## 4" Line Voltage ICA Housings



4" Airtight IC Housing  
**Double Wall Construction**

CAT NO.	SPECIFICATIONS
EL99ICA	Lamp: 50W MAX.



4" Airtight Housing  
**New Construction**

CAT NO.	SPECIFICATIONS
EL99A	Lamp: 50W MAX.



4" Airtight IC Housing  
**New Construction**

CAT NO.	SPECIFICATIONS
EL99LDICA	Lamp: LED 12W MAX.



4" Airtight IC Housing with GU24 Base Socket  
**New Construction**

CAT NO.	SPECIFICATIONS
EL99ICA-G24	Lamp: 18W MAX.



4" Airtight IC 2-Hour Fire Rated Housing  
**New Construction**

CAT NO.	SPECIFICATIONS
EL99FICA	Lamp: 35W MAX.

## 4" Accessories



**Fire Cover**

CAT NO.	SPECIFICATIONS
FIRECVR	9 3/4" H x 17" O.D.



**Fire Enclosure**

CAT NO.	SPECIFICATIONS
FIREENCL	20 3/8" L x 14 3/8" W
FIREENCL-S	Shallow, 16" L x 14 3/8" W



**Mica Fire Tape**

CAT NO.	SPECIFICATIONS
FIRETAPE	3/4" W x 16' L