

4" LED Light Engine with Trimless Reflector Square

The perfect lighting solution for high-end residential and light commercial projects.



Features

- High efficacy LED module.
- Triac/ELV/0-10V dimming.
- Must be used with ELCO 4" Cedar™ System Housings.
- Life span of 50,000 hours L70.
- USA designed and assembled.
- Limited 5 year warranty.
- Spackle frame included.
- 2 at the end of the item number denotes Generation 2. Please note Gen 2 and Gen 1 are not cross compatible.

Specifications

Wattage	8.76W
Lumens	850 lm
Color Temp.	3000K
Lamp Type	LED
Beam Angle	60°
CRI	93+
Wet Location	Listed

Options



All White



All Black



All Bronze

Technical Details

Optics: Frosted polycarbonate module lens diffuses light evenly throughout while reducing glare with LED technology.

Trim Construction: Reflector is two piece trim for maximum color versatility. Design allows for minimal glare and a strong glare cut-off. Trim is constructed of metal for lasting durability.

Installation: Must be installed on a Cedar™ System housing with compatible lumen rating. Frames are available for New Construction and Remodel as IC or non-IC.

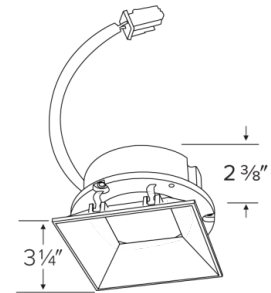
LED Technology:

- Extremely accurate Color Rendering Index of 93+.
- Efficacy of 97 lumens per watt.
- Lumen Maintenance of 50,000 hours L70 Life based on LM80 standardized test results.
- Superior Thermal Management by utilizing ELCO Red heat sink.
- Instant On to Full Brightness technology.
- No LED pixilation.

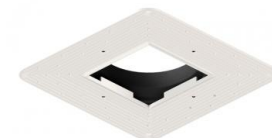
Sunset: Sunset color temperature is our dim-to-warm LED technology that allows the color temperature to become warmer as the product is dimmed. Our SUNSET items start at 3000K and go as low as 1800K when dimmed. For Sunset dim technology be sure to order an item with "Sunset" in the Color Temperature (CCT) attribute.

Listings: cUL Listed for Wet Location. RoHS Compliant.

Dimensions



Spackle Frame Included



Product Number Builder Example: E444C0827W2

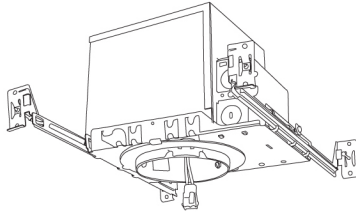
ELCO 4" Trimless Square	Lumens	Color Temp.	Finish	Generation	Beam Angle
E444C	08 850 lm	27 2700K 30 3000K 35 3500K 40 4000K 50 5000K SD Sunset ¹	W All White BZ All Bronze B All Black	2 Gen 2 1 Gen 1	60° lens -F 38° lens -N 24° lens -S 15° lens

¹ Sunset, Dim to Warm technology, automatically transitions from 3000K to 1800K when dimmed

Compatible Products

For use with 4" Cedar™ Trimless Light Engines

4" Cedar™ Dedicated Trimless LED ICA Housings



4" IC Housing
New Construction

CAT NO.	SPECIFICATIONS
E4TL	Up to 1600lm

PRODUCT NUMBER BUILDER

Housing Type	Lumen	IC Airtight	Dimming	Optional
E4TL	<p>08 850 lm</p> <p>12 1250 lm</p> <p>16 1600 lm</p>	ICA	<p>(Blank) 120V Triac/ELV</p> <p>D 120/277V Triac/ELV/0-10V</p> <p>SD Sunset</p> <p>L Lutron</p>	<p>EM1 Emergency Backup up to 700 lm</p> <p>EM2 Emergency Backup up to 1100 lm</p>