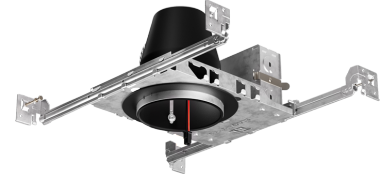


4" ICA Airtight New Construction Housing for Architectural Koto™ LED Engine



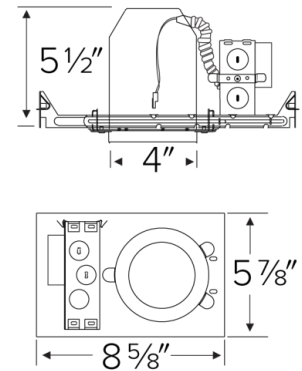
Features

- IC Airtight for direct contact with insulation.
- Koto™ Architectural Housing: 120/277V 0-10V/Triac/ELV or 120V Triac/ELV with optional Emergency Battery Backup.
- Must be used with Architectural Koto™ LED Light Engines (ELK19, ELK21, or ELK24 Series).
- Lumen output based on module

Specifications

Wattage	11.8W (12.6W MAX. with ELK19, ELK21 & ELK24)W
Lumens	750 (ELK19) - 950 (ELK21) - 1100 (ELK24) lm
Voltage	120/277V or 120V
Dimmable	Triac/ELV, 0-10V/Triac/ELV (1% Dimming)

Dimensions



Technical Details

Lamp: Designed for use with ELCO Architectural Koto™ LED Light Engines (ELK19, ELK21, or ELK24 Series)

Construction: Single Wall IC Rated for direct contact with insulation, for use in IC or non-IC conditions. Housing adjusts in frame to accommodate up to 1 1/2" ceiling thickness. Airtight housing with gasket to restrict airflow in accordance with ASTM E-283 air-tight requirements.

Installation: Designed for ceiling plenums where 2x6 joists or taller joists are used. High strength hanger bars can easily be nailed to joists. Maximum hole cutout is 4 1/4". Suitable for t-grid and drop ceiling applications. See installation sheet for detailed information.

Junction Box: Positioned to accommodate straight conduit runs. Seven 1/2" trade size conduit knockouts, four 3/4" knockouts. Pry-out knockout slots. 4 Romex pryouts with strain relief.

Hanger Bars: Pre-installed hanger bars with True Nail facilitate easy installation in regular lumber, engineered lumber, and laminated beams. Integral T-bar slots for easy installation in T-bars. Spans up to 24" and can be repositioned 90°. Score lines allow for tool-free hanger bar size reduction. Integral leveling flange allows for single-person installation while aligning the housings with the joists.

Electrical: Input Voltage: 120V or 120/277V. High efficiency driver with power factor > 0.9

Dimmability: Triac/ELV or Triac/ELV/0-10V (1% dimming)

Listings: cUL Listed for Damp Location. cUL Listed for Wet Location with select trims. cUL Listed for Feed Through. cUL Listed for Direct Contact with Insulation. Airtight per ASTM E-283. Install a JA8-2016-E lamp/luminaire for Title 24 Compliance.

Warranty: ELCO Lighting warrants products will be free from defects in materials and workmanship for a period of 5 years.

Product Numbers

Item	Description	Lumens	Watts	Voltage	Dimming
E4LK87ICA	New Construction	750 (ELK19) - 950 (ELK21) - 1100 (ELK24) lm	11.8W (12.6W MAX. with ELK19, ELK21 & ELK24)	120V	Triac/ELV
E4LK88ICAD	New Construction	750 (ELK19) - 950 (ELK21) - 1100 (ELK24) lm	11.8W (12.6W MAX. with ELK19, ELK21 & ELK24)	120/277V	0-10V/Triac/ELV (1% Dimming)
E4LK87ICA-EM1	with 90 min. Emergency Battery Back-Up	750 (ELK19) - 950 (ELK21) - 1100 (ELK24) lm	11.8W (12.6W MAX. with ELK19, ELK21 & ELK24)	120V	Triac/ELV
E4LK88ICAD-EM1	with 90 min. Emergency Battery Back-Up	750 (ELK19) - 950 (ELK21) - 1100 (ELK24) lm	11.8W (12.6W MAX. with ELK19, ELK21 & ELK24)	120/277V	0-10V/Triac/ELV (1% Dimming)

Product Number Builder

Example: **E4LK87ICA**

4" Koto™ Standard ICA Housing

Voltage

Dimming

E4LK

87 120V (11.8W) ¹

88 120/277V (11.8W) ²

ICA Triac/ELV

ICAD 0-10V/Triac/ELV ³

¹ Available as 120V, Triac/ELV only

² Available as 120/277V, 0-10V/Triac/ELV only

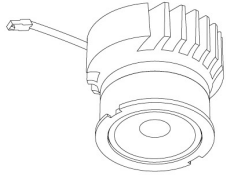
³ 1% Dimming

Compatible Products

For use with Dedicated 4" Architectural ICA LED Housings



Koto™ Architectural LED Light Engine



Koto™ LED Light Engine
ELK19 - ELK21

PRODUCT NUMBER BUILDER			
Koto™ LED Light Engine	Lumens	Color Temperature	Beam Angle
ELK			
19	750 - 850 lm ¹	27D 2700K	(blank) 38° lens (Standard)
21	1100 - 1500 lm ¹	30D 3000K	-S 18° lens
24	1100 - 1800 lm ¹	35D 3500K	-N 25° lens
		40D 4000K	-W 60° lens
		SD Sunset Dimming (ELK19 Only)	-FC 18° - 50° Adjustable (ELK21 Only)

¹Wattage based on housing.

ACCESSORIES



Lens

- EP731C 18° Lens
- EP732C 25° Lens
- EP733C 38° Lens
- EP734C 60° Lens

^{*}EP732C, EP733C, EP734C Included



Snoot

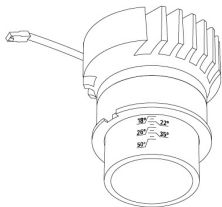
- L50W White
- L50B Black



Secondary Optics

- L45 Hex Louver
- L46 Linear Lens
- L47 Spread Louver
- L49 Frosted Lens
- L51 Color Shifter

Koto™ FOCUS Architectural LED Light Engine

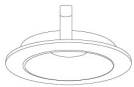


Koto™ FOCUS LED Light Engine

PRODUCT NUMBER BUILDER			
Koto™ FOCUS LED Light Engine	Lumens	Color Temperature	Beam Angle
ELK			
21	1100 - 1500 lm	27D 2700K	-FC 18° - 50° Adjustable Focus
		30D 3000K	
		35D 3500K	
		40D 4000K	

¹Wattage based on housing.

4" Pex™ Twist-On Trims



Shallow Reflector

ELK4116
Finishes:
(W, H)



Reflector

ELK4118
Finishes:
(W, BB, BZ, B, C, H)



Adjustable Gimbal

ELK4129
Finishes:
(W, BB, BZ, B, C, H)



Adjustable Pinhole

ELK4127
Finishes:
(W, B, BB, BZ, N, CP)



Adjustable Baffle

ELK4193
Finishes:
(W, BB, B)



Rotatable Slot Aperture

ELK4120
Finishes:
(W)



Slot Aperture

ELK4130
Finishes:
(W)



Adjustable Spot

ELK4188
Finishes:
(W, B, BZ)

Compatible Products



For use with Dedicated 4" Architectural ICA LED Housings & ALO™ Box

4" Pex™ Twist-On Trims



Shallow Reflector

ELK4216

Finishes:

(W, H)



Reflector

ELK4218

Finishes:

(W, BB, BZ, B, C, H)

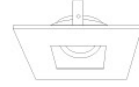


Adjustable Gimbal

ELK4229

Finishes:

(W, BB, BZ, B, C, H)



Adjustable Pinhole

ELK4227

Finishes:

(W, B, BB, BZ, N)



Adjustable Slot Rotatable

ELK4220

Finishes:

(W)

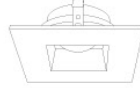


Adjustable Phenolic Baffle

ELK4293

Finishes:

(W, BB, B)

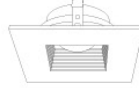


Adjustable Reflector

ELK4282

Finishes:

(W, BZ)



Adjustable Baffle

ELK4284

Finishes:

(W, B, BZ)

*Finishes: **W** - All White, **BB** - All Black, **BZ** - All Bronze, **B** - Black Reflector w/White Ring, **C** - Chrome Reflector w/White Ring, **H** - Haze Reflector w/White Ring

4" Flexa™ Twist-On Trims



Round Reflector

ELK4721

Finishes:

(WW, BB, BZBZ, BW, CC, CW, HW, CN)

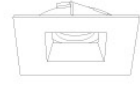


Round Baffle

ELK4723

Finishes:

(WW, BB, BZBZ, BW)



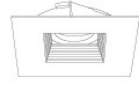
Square Reflector

ELK4741

Finishes:

(WW, BB, BZBZ, BW, HW)

**Not for Remodel Housing*



Square Baffle

ELK4743

Finishes:

(WW, BB, BZBZ, BW)

**Not for Remodel Housing*



Adjustable Sq. Reflector

ELK4759

Finishes:

(WW, BB, B, H)

*Finishes: **W** - All White, **BB** - All Black, **BZ** - All Bronze, **B** - Black Reflector w/White Ring, **C** - Chrome Reflector w/White Ring, **H** - Haze Reflector w/White Ring