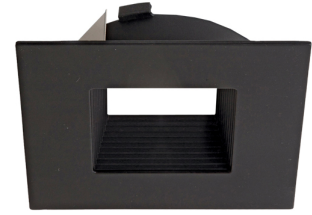


# 4" Diecast Square Baffle Flexa™ Trim



## Features

- 2 Piece E.L.L. trims for maximum design flexibility.
- Convenient twist-lock design for ease of installation.
- Diecast construction for lasting quality.

## Technical Details

**Construction:** Diecast aluminum with a powder coated finish.

**Installation:** Twist-lock design allows for easy mounting onto the E.L.L. LED Module. Clips securely mount trim into the housing and keep ring flush with the ceiling.

**Compatible housing:** Compatible with 4" IC and non-IC housing (non-shallow).

**Lamp:** E.L.L. LED Module only (ELL08, ELL11).

## Specifications

## Options



All White



All Bronze



Black w/ White



All Black

## Product Numbers

Item	Finish
ELL4643WW	All White
ELL4643BZBZ	All Bronze
ELL4643BW	Black w/ White
ELL4643BB	All Black

## Product Number Builder Example: ELL4643WW

4" Square Baffle Flexa™ Trim	Baffle	Ring
ELL4643		
<b>W</b> White <b>BZ</b> Bronze <b>B</b> Black		<b>W</b> White <b>BZ</b> Bronze <b>B</b> Black