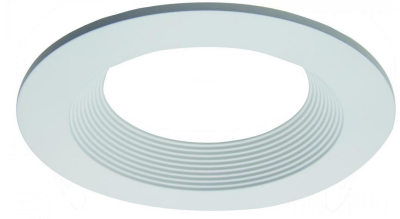


4" Die-cast Round Baffle Trim for PAR LAMPS

4" diecast round baffle trim. For use with PAR 20 Lamp.



Features

- 4" Round Baffle
- Lamp: PAR 20 Lamp.

Technical Details

Construction: Diecast aluminum with a powder-coated finish.

Compatible Housing: Compatible with 4" IC and Non-IC housings (non-shallow).

Lamp: PAR 20 Lamp.

Options

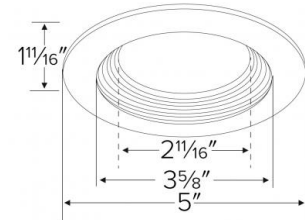


White



Bronze

Dimensions



Product Numbers

Item	Finish
ELL4813W	All White
ELL4813BZ	All Bronze

Product Number Builder Example: ELL4813W

4" Round Baffle Trim

Finish

ELL4813

W All White

BZ All Bronze

Compatible Products

For use with 4" Trims for PAR Lamps

4" Line Voltage ICA Housings



4" Airtight IC Housing
Double Wall Construction

CAT NO.	SPECIFICATIONS
EL99ICA	Lamp: 50W MAX.



4" Airtight Housing
New Construction

CAT NO.	SPECIFICATIONS
EL99A	Lamp: 50W MAX.



4" Airtight IC Housing
New Construction

CAT NO.	SPECIFICATIONS
EL99LDICA	Lamp: LED 12W MAX.



4" Airtight IC Housing with GU24 Base Socket
New Construction

CAT NO.	SPECIFICATIONS
EL99ICA-G24	Lamp: 18W MAX.



4" Airtight IC 2-Hour Fire Rated Housing
New Construction

CAT NO.	SPECIFICATIONS
EL99FICA	Lamp: 35W MAX.

4" Accessories



Fire Cover

CAT NO.	SPECIFICATIONS
FIRECVR	9 3/4" H x 17" O.D.



Fire Enclosure

CAT NO.	SPECIFICATIONS
FIREENCL	20 3/8" L x 14 3/8" W
FIREENCL-S	Shallow, 16" L x 14 3/8" W



Mica Fire Tape

CAT NO.	SPECIFICATIONS
FIRETAPE	3/4" W x 16' L