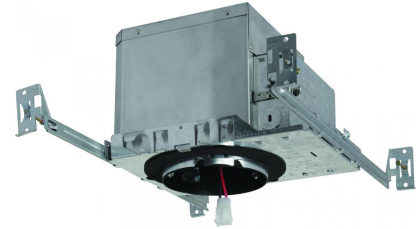


# 4" Cedar System Non-IC New Construction LED Double Wall Housing w/ Driver



Non-IC Airtight housing for high-end residential and light commercial, 1600 lumens.

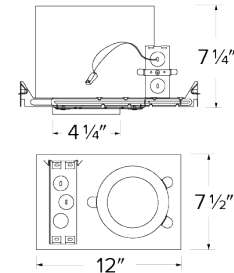
## Features

- USA designed and assembled.
- Limited 5 year warranty.
- For use with ELCO Cedar™ System 4" LED Light Engines.
- 2 at the end of the item number denotes Generation 2. Please note Gen 2 and Gen 1 are not cross compatible.

## Specifications

|                 |                                       |
|-----------------|---------------------------------------|
| <b>Lumens</b>   | 1600 lm                               |
| <b>Voltage</b>  | 120/277V or 120V                      |
| <b>Dimmable</b> | Triac/ELV,<br>Triac/ELV/0-10V, Sunset |

## Dimensions



## Technical Details

**Construction:** Non-IC Frame for non-IC conditions. Housing adjusts in frame to accommodate up to 1 1/2" ceiling thickness.

**Installation:** Designed for ceiling plenums where 2x6 joists or taller are used. High strength hanger bars can easily be nailed to joists. Suitable for T-grid and drop ceiling applications. See installation sheet for detailed information.

**Junction Box:** Positioned to accommodate straight conduit runs. Two 3/4" knockouts, Seven 1/2" trade size conduit knockouts, One 3/8" knockout. Four Pry-out knockout slots for easy romex installation.

**Hanger Bars:** Pre Installed hanger bars with True Nail easy installation in regular lumber, engineered lumber, and Laminated Beams. Integral T-bar slots for easy installation in T-Bars. Spans up 24" and can be repositioned 90°. Score lines allow for tool-free hanger bar size reduction. Integral leveling flange allows for single-person installation while easily aligning the housings with the joists.

**Electrical:** Driver is rated for 120V and 277V input (120/277V). High Efficiency driver with a power factor > 0.95.

**Dimmability:** 3 in 1 dimming: Triac, ELV and 0-10V dimming in one driver. 0-10V dimming down to 5% with a compatible dimmer. Can be specified with Lutron drivers for 0.1% and 1% dimming. For a full list of dimmers refer to the Dimmer Compatibility List.

**Emergency Battery Pack:** Optional 90 minute battery pack available with test indicator switch. Note that double wall housings require Access From Above Ceiling for Battery Maintenance.

**Listings:** cUL Listed for Damp Location and for Wet Location with select trims. cUL Listed for Feed Through.

## Product Numbers

| Item            | Lumens  | Voltage  | Dimming         |
|-----------------|---------|----------|-----------------|
| <b>E4LC162</b>  | 1600 lm | 120V     | Triac/ELV       |
| <b>E4LC16D2</b> | 1600 lm | 120/277V | Triac/ELV/0-10V |
| <b>E4LC16SD</b> | 1600 lm | 120/277V | Sunset          |

## Product Number Builder Example: E4LC162

| ELCO Cedar 4" Housing | Lumens            | Dimming  | Generation              | Optional   |
|-----------------------|-------------------|--|-------------------------|--|
| <b>E4LC</b>           | <b>16</b> 1600 lm | 120V Triac/ELV<br><b>D</b> 120/277V Triac/ELV/0-10V<br><b>SD</b> Sunset<br><b>L</b> Lutron | <b>2</b> Gen 2<br>Gen 1 | No EM<br><b>EM1</b> Em. battery up to 700 lm<br><b>EM2</b> Em. battery up to 1100 lm |

# Compatible Products



For use with 4" Cedar™ Non-IC LED housings

## 4" Cedar™ LED Light Engines



**Round Reflector Trim**

**E410C**

Finishes:

(W, B, C, H, BZ, BB, MW, MB)



**Wall Wash Reflector Trim**

**E411C**

Finishes:

(W, B, C, H, BZ, BB, MW, MB)



**Drop Glass Reflector Trim**

**E412C**

Finishes:

(W, B, C, H, BB, MW, MB)



**Round Baffle Trim**

**E414C**

Finishes:

(W, B, BZ, BB)



**Round Pinhole Trim**

**E429C**

Finishes:

(W, B, C)



**Square on Sq. Baffle Trim**

**E415C**

Finishes:

(W, BZ)



**Square on Sq. Reflector Trim**

**E417C**

Finishes:

(W, BZ)



**Round on Sq. Reflector Trim**

**E420C**

Finishes:

(W, C, H, BZ, BB)



**Round on Sq. Baffle Trim**

**E424C**

Finishes:

(W, B, BZ, BB)



**Round Adjustable Trim**

**E418C**

Finishes:

(W, C, BB, BZ)



**Square Adjustable Trim**

**E428C**

Finishes:

(W, C, BB, BZ)

### PRODUCT NUMBER BUILDER

| 4" Cedar™ Trim | Style                             | Lumen                   | Color Temperature        | Finish                       |
|----------------|-----------------------------------|-------------------------|--------------------------|------------------------------|
| <b>E4</b>      |                                   |                         |                          |                              |
|                | <b>10C</b> Reflector              | <b>16</b> 1600 lm (18W) | <b>27</b> 2700K          | <b>W</b> All White           |
|                | <b>11C</b> Wall Wash              |                         | <b>30</b> 3000K          | <b>B</b> Black w/White Ring  |
|                | <b>12C</b> Drop Glass             |                         | <b>35</b> 3500K          | <b>BZ</b> All Bronze         |
|                | <b>14C</b> Baffle                 |                         | <b>40</b> 4000K          | <b>BB</b> All Black          |
|                | <b>15C</b> Sq. on Sq. Baffle      |                         | <b>50</b> 5000K          | <b>C</b> Chrome w/White Ring |
|                | <b>17C</b> Sq. on Sq. Reflector   |                         | <b>SD</b> Sunset Dimming | <b>H</b> Haze w/White Ring   |
|                | <b>18C</b> Round Adjustable       |                         |                          | <b>MW</b> Matte White        |
|                | <b>20C</b> Round on Sq. Reflector |                         |                          | <b>MB</b> Matte Black        |
|                | <b>24C</b> Round on Sq. Baffle    |                         |                          |                              |
|                | <b>28C</b> Square Adjustable      |                         |                          |                              |

# Compatible Products

For use with 4" Cedar™ Non-IC LED housings



## 4" Accessories

---



**Fire Cover**

| CAT NO. | SPECIFICATIONS      |
|---------|---------------------|
| FIRECVR | 9 3/4" H x 17" O.D. |



**Fire Enclosure**

| CAT NO.    | SPECIFICATIONS                |
|------------|-------------------------------|
| FIREENCL   | 20 3/8" L x 14 3/8" W         |
| FIREENCL-S | Shallow,<br>16" L x 14 3/8" W |



**Mica Fire Tape**

| CAT NO.  | SPECIFICATIONS |
|----------|----------------|
| FIRETAPE | 3/4" W x 16' L |