

# 4" Cedar System New Construction 2-Hour Fire Rated Housing w/Driver

2-Hour Fire Rated for use with Cedar System LED Light Engines.



## Features

- cUL Listed for 2-Hour Fire Resistance to meet and exceed strict fire safety codes.
- Integrated Non-combustible insulation acts as a sound barrier minimizing sound transfer between floors.
- Optional 90 minutes, 120/277 VAC, 60Hz, Emergency Backup.
- Flicker-Free Dimming.
- USA designed and assembled.
- Limited 5 year warranty.
- For use with ELCO Cedar™ System 4" LED Light Engines.
- 2 at the end of the item number denotes Generation 2. Please note Gen 2 and Gen 1 are not cross compatible.

## Specifications

<b>Lumens</b>	850 lm
<b>Voltage</b>	120V
<b>Dimmable</b>	Triac/ELV
<b>Power Factor</b>	≥0.95
<b>Damp Location Listed</b>	

## Options



**Optional Butterfly Bracket**

## Technical Details

### Construction:

- Double wall IC rated for direct contact with insulation. For use in IC and non-IC conditions.
- Housing adjusts in frame to accommodate up to 1 1/2" ceiling thickness.
- Airtight housing with gasket to restrict airflow in accordance with ASTM E-283 air-tight requirements.

### Installation:

- Designed for ceiling plenums where 2x8 joists or taller are used.
- High strength hanger bars can easily be nailed to joists.
- Suitable for T-grid and drop ceiling applications.
- See installation sheet for detailed information.
- Emergency Battery Back-up Option requires access from above

**Junction Box:** Positioned to accommodate straight conduit runs. Two 3/4" knockouts, Seven 1/2" trade size conduit knockouts, One 3/8" knockout. Four Pry-out knockout slots for easy romex installation.

**Hanger Bars:** Pre Installed hanger bars with True Nail easy installation in regular lumber, engineered lumber, and Laminated Beams. Integral T-bar slots for easy installation in T-Bars. Spans up 24" and can be repositioned 90°. Score lines allow for tool-free hanger bar size reduction. Integral leveling flange allows for single-person installation while easily aligning the housings with the joists.

### Electrical:

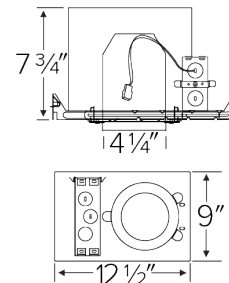
- Driver is rated for 120V and 277V input (120/277V).
- High Efficiency driver with a power factor > 0.95.

**Emergency Battery Pack:** Optional 90 minute battery pack available with test indicator switch. Note that double wall housings require Access From Above Ceiling for Battery Maintenance.

### Dimmability:

- 3 in 1 dimming: Triac, ELV and 0-10V dimming in one driver.
- 0-10V dimming down to 5% with a compatible dimmer.
- Can be specified with Lutron drivers for 0.1% and 1% dimming.
- For a full list of dimmers refer to the Dimmer Compatibility List.

## Dimensions



## Product Number

Item	Lumens	Voltage	Dimming
<b>E4FH08ICA2</b>	850 lm	120V	Triac/ELV

**Listings:** cUL Listed for Damp Location and for Wet Location with select trims. cUL Listed for Direct Contact with Insulation and Combustible Material. cUL Listed for Feed Through.

**Product Number Builder**    Example: **E4FH08ICA2**

ELCO Cedar 4" Fire Housing	Lumens	IC Airtight	Dimming	Generation	Optional
<div>E4FH</div>	<div>08 850 lm</div>	<div>ICA ICA</div>	<div>120V Triac/ELV D 120/277V Triac/ELV/0-10V SD Sunset L Lutron</div>	<div>2 Gen 2 Gen 1</div>	<div>No EM EM1 Emer. Backup up to 700 lm EM2 Emer. Backup to 1100 lm</div>

# Compatible Products

For use with 4" Cedar™ IC LED housings



## 4" Cedar™ LED Light Engines



**Round Reflector Trim**

**E410C**

Finishes:

(W, B, C, H, BZ, BB, MW, MB)



**Wall Wash Reflector Trim**

**E411C**

Finishes:

(W, B, C, H, BZ, BB, MW, MB)



**Drop Glass Reflector Trim**

**E412C**

Finishes:

(W, B, C, H, BB, MW, MB)



**Round Baffle Trim**

**E414C**

Finishes:

(W, B, BZ, BB)



**Round Pinhole Trim**

**E429C**

Finishes:

(W, B, C)



**Square on Sq. Baffle Trim**

**E415C**

Finishes:

(W, BZ)



**Square on Sq. Reflector Trim**

**E417C**

Finishes:

(W, BZ)



**Round on Sq. Reflector Trim**

**E420C**

Finishes:

(W, C, H, BZ, BB)



**Round on Sq. Baffle Trim**

**E424C**

Finishes:

(W, B, BZ, BB)



**Round Adjustable Trim**

**E418C**

Finishes:

(W, C, BB, BZ)



**Square Adjustable Trim**

**E428C**

Finishes:

(W, C, BB, BZ)

### PRODUCT NUMBER BUILDER

4" Cedar™ Trim	Style	Lumen	Color Temperature	Finish
<b>E4</b>				
	<b>10C</b> Reflector	<b>08</b> 850 lm (8.76W)	<b>27</b> 2700K	<b>W</b> All White
	<b>11C</b> Wall Wash		<b>30</b> 3000K	<b>B</b> Black w/White Ring
	<b>12C</b> Drop Glass		<b>35</b> 3500K	<b>BZ</b> All Bronze
	<b>14C</b> Baffle		<b>40</b> 4000K	<b>BB</b> All Black
	<b>15C</b> Sq. on Sq. Baffle		<b>50</b> 5000K	<b>C</b> Chrome w/White Ring
	<b>17C</b> Sq. on Sq. Reflector		<b>SD</b> Sunset Dimming	<b>H</b> Haze w/White Ring
	<b>18C</b> Round Adjustable			<b>MW</b> Matte White
	<b>20C</b> Round on Sq. Reflector			<b>MB</b> Matte Black
	<b>24C</b> Round on Sq. Baffle			
	<b>28C</b> Square Adjustable			

# Compatible Products

For use with 4" Cedar™ IC LED housings



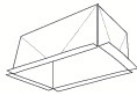
## 4" Accessories

---



Fire Cover

CAT NO.	SPECIFICATIONS
FIRECVR	9 3/4" H x 17" O.D.



Fire Enclosure

CAT NO.	SPECIFICATIONS
FIREENCL	20 3/8" L x 14 3/8" W
FIREENCL-S	Shallow, 16" L x 14 3/8" W



Mica Fire Tape

CAT NO.	SPECIFICATIONS
FIRETAPE	3/4" W x 16' L