

# 4" Baffle Trim with Socket Bracket



## Features

- Baffle Trim with Socket Bracket, 25-30° tilt.
- Lamp: 55W PAR16, 50W PAR20 or R20.
- O.D.: 4 3/4".

## Technical Details

### Construction:

- Meticulously manufactured trim with a powder coated or anodized finish.
- Baffle helps reduce glare.

**Installation:** Clips securely mount trim into the housing and keeps ring flush with ceiling.

**Compatible Housing:** Compatible with 4" Line Voltage IC and Non-IC versions.

**Lamp:** Compatible with Medium base (E26) PAR type.

## Options



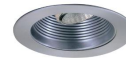
White



Black w/White Trim



Copper



Nickel



Bronze

## Product Number

Item	Finish
EL995N	Nickel

## Product Number Builder Example: EL995BZ

4" Baffle Trim with Socket Bracket

Finish

EL995

<p><b>BZ</b> All Bronze</p> <p><b>CP</b> All Copper</p> <p><b>N</b> Nickel</p> <p><b>W</b> All White</p> <p><b>B</b> Black with White Trim</p>
--

# Compatible Products

For use with 4" Trims for PAR Lamps

## 4" Line Voltage ICA Housings



4" Airtight IC Housing  
Double Wall Construction

CAT NO.	SPECIFICATIONS
EL99ICA	Lamp: 50W MAX.



4" Airtight Housing  
New Construction

CAT NO.	SPECIFICATIONS
EL99A	Lamp: 50W MAX.



4" Airtight IC Housing  
New Construction

CAT NO.	SPECIFICATIONS
EL99LDICA	Lamp: LED 12W MAX.



4" Airtight IC Housing with GU24 Base Socket  
New Construction

CAT NO.	SPECIFICATIONS
EL99ICA-G24	Lamp: 18W MAX.



4" Airtight IC 2-Hour Fire Rated Housing  
New Construction

CAT NO.	SPECIFICATIONS
EL99FICA	Lamp: 35W MAX.

## 4" Accessories



Fire Cover

CAT NO.	SPECIFICATIONS
FIRECVR	9 3/4" H x 17" O.D.



Fire Enclosure

CAT NO.	SPECIFICATIONS
FIREENCL	20 3/8" L x 14 3/8" W
FIREENCL-S	Shallow, 16" L x 14 3/8" W



Mica Fire Tape

CAT NO.	SPECIFICATIONS
FIRETAPE	3/4" W x 16' L