

4" Baffle Trim with Socket Bracket



Features

- Baffle Trim with Socket Bracket, 25-30° tilt.
- Lamp: 55W PAR16, 50W PAR20 or R20.
- O.D.: 4 3/4".

Technical Details

Construction:

- Meticulously manufactured trim with a powder coated or anodized finish.
- Baffle helps reduce glare.

Installation: Clips securely mount trim into the housing and keeps ring flush with ceiling.

Compatible Housing: Compatible with 4" Line Voltage IC and Non-IC versions.

Lamp: Compatible with Medium base (E26) PAR type.

Options



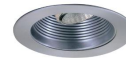
White



Black w/White Trim



Copper



Nickel



Bronze

Product Numbers

Item	Finish
EL995BZ	All Bronze
EL995CP	Copper
EL995N	Nickel
EL995W	All White
EL995B	Black with White Trim

Product Number Builder Example: EL995BZ

4" Baffle Trim with Socket Bracket

Finish

EL995

- BZ** All Bronze
- CP** All Copper
- N** Nickel
- W** All White
- B** Black with White Trim

Compatible Products

For use with 4" Trims for PAR Lamps

4" Line Voltage ICA Housings



4" Airtight IC Housing
Double Wall Construction

CAT NO.	SPECIFICATIONS
EL99ICA	Lamp: 50W MAX.



4" Airtight Housing
New Construction

CAT NO.	SPECIFICATIONS
EL99A	Lamp: 50W MAX.



4" Airtight IC Housing
New Construction

CAT NO.	SPECIFICATIONS
EL99LDICA	Lamp: LED 12W MAX.



4" Airtight IC Housing with GU24 Base Socket
New Construction

CAT NO.	SPECIFICATIONS
EL99ICA-G24	Lamp: 18W MAX.



4" Airtight IC 2-Hour Fire Rated Housing
New Construction

CAT NO.	SPECIFICATIONS
EL99FICA	Lamp: 35W MAX.

4" Accessories



Fire Cover

CAT NO.	SPECIFICATIONS
FIRECVR	9 3/4" H x 17" O.D.



Fire Enclosure

CAT NO.	SPECIFICATIONS
FIREENCL	20 3/8" L x 14 3/8" W
FIREENCL-S	Shallow, 16" L x 14 3/8" W



Mica Fire Tape

CAT NO.	SPECIFICATIONS
FIRETAPE	3/4" W x 16' L