

4" Adjustable Spot Cylinder Trim



Features

- Adjustable Spot Cylinder, 25° tilt.
- O.D.: 4 3/4".

Technical Details

Construction:

- Meticulously manufactured trim with a powder coated or anodized finish.
- Diecast trim ring for durability and lasting quality.

Installation: Clips securely mount trim into the housing and keeps ring flush with ceiling.

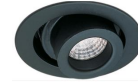
Compatible Housing: Compatible with 4" Line Voltage IC and Non-IC versions.

Lamp: 120V 50W MAX MR16 (need PSA28, not for use in IC housings) or 50W JDR.

Options



White



Black

Product Numbers

Item	Finish
EL955B	All Black
EL955W	All White

Product Number Builder Example: EL955B

4" Adjustable Spot Cylinder Trim

Finish

EL955

- B** All Black
- W** All White