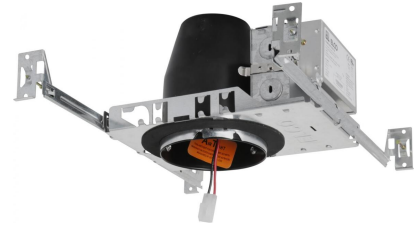


3" Non-IC Airtight Single Wall Housing with Driver

Non-IC Airtight housing for high-end residential and light commercial, 850 to 1250 lumens.



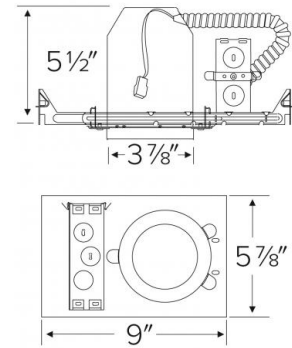
Features

- Optional 90 minutes, 120/277 VAC, 60Hz, Emergency Backup.
- Flicker-Free Dimming.
- USA designed and assembled.
- Limited 5 year warranty.
- For use with ELCO Cedar™ System 3" LED Light Engines.
- 2 at the end of the item number denotes Generation 2. Please note Gen 2 and Gen 1 are not cross compatible.

Specifications

Lumens	1000 lm
Voltage	120V
Dimmable	Triac/ELV
Power Factor	≥0.95
Damp Location	Listed

Dimensions



Technical Details

Construction:

- Non-IC Frame for non-IC conditions.
- Housing adjusts in frame to accommodate up to 1 1/2" ceiling thickness.

Installation:

- Designed for ceiling plenums where 2x6 joists or taller are used.
- High strength hanger bars can easily be nailed to joists.
- Suitable for T-grid and drop ceiling applications.
- See installation sheet for detailed information.

Junction Box: Positioned to accommodate straight conduit runs. Two 3/4" knockouts, Seven 1/2" trade size conduit knockouts, One 3/8" knockout. Four Pry-out knockout slots for easy romex installation.

Hanger Bars: Pre Installed hanger bars with True Nail easy installation in regular lumber, engineered lumber, and Laminated Beams. Integral T-bar slots for easy installation in T-Bars. Spans up 24" and can be repositioned 90°. Score lines allow for tool-free hanger bar size reduction. Integral leveling flange allows for single-person installation while easily aligning the housings with the joists.

Electrical:

- Driver is rated for 120V and 277V input (120/277V).
- High Efficiency driver with a power factor > 0.95.

Emergency Battery Pack: Optional 90 minute battery pack available with test indicator switch. Note that double wall housings require Access From Above Ceiling for Battery Maintenance.

Dimmability:

- 3 in 1 dimming: Triac, ELV and 0-10V dimming in one driver.
- 0-10V dimming down to 5% with a compatible dimmer.
- Can be specified with Lutron drivers for 0.1% and 1% dimming.
- For a full list of dimmers refer to the Dimmer Compatibility List.

Listings: cUL Listed for Damp Location and for Wet Location with select trims. cUL Listed for Feed Through.

Product Number

Item	Lumens	Voltage	Dimming
E3LC102	1000 lm	120V	Triac/ELV

Product Number Builder

Example: **E3LC082**

ELCO Cedar 3" Housing

Lumens

Dimming

Generation

Optional

E3LC

08 850 lm

10 1000 lm

120V Triac/ELV

D 120/277V Triac/ELV/0-10V

SD Sunset

L Lutron

2 Gen 2

Gen 1

No EM

EM1 Emer. Backup up to 700 lm

EM2 Emer. Backup to 1100 lm

Compatible Products



For use with 3" Cedar™ Non-IC LED housings

3" Cedar™ LED Light Engines



Round Reflector Trim

E310C

Finishes:

(W, B, BB, BZ, C, H)



Round Baffle Trim

E314C

Finishes:

(W, B, BB, BZ)



Square Pinhole Trim

E315C

Finishes:

(W, B, C)



Square Reflector Trim

E320C

Finishes:

(W, BB, BZ, C)



Round Pinhole Trim

E329C

Finishes:

(W, B, C)

PRODUCT NUMBER BUILDER

3" Cedar™ Trim	Style	Lumen	Color Temperature	Finish
E3				
	10C Round Reflector	08 850 lm	27 2700K	W All White
	14C Round Baffle	10 1000 lm	30 3000K	B Black w/White Ring
	15C Square Pinhole		35 3500K	BB All Black
	20C Square Reflector		40 4000K	BZ All Bronze
	29C Pinhole Trim		50 5000K	C Chrome w/White Ring
			SD Sunset Dimming	H Haze w/White Ring

3" Accessories



Fire Cover

CAT NO.	SPECIFICATIONS
FIRECVR	9 3/4" H x 17" O.D.



Fire Enclosure

CAT NO.	SPECIFICATIONS
FIREENCL	20 3/8" L x 14 3/8" W
FIREENCL-S	Shallow, 16" L x 14 3/8" W



Mica Fire Tape

CAT NO.	SPECIFICATIONS
FIRETAPE	3/4" W x 16' L