

# 3" Non-IC Airtight Remodel Housing with Driver



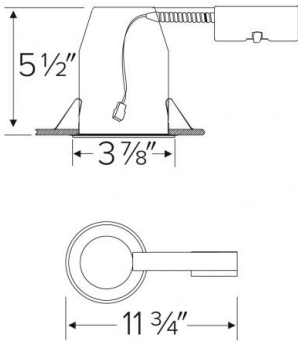
## Features

- Optional 90 minutes, 120/277 VAC, 60Hz, Emergency Backup.
- Flicker-Free Dimming.
- USA designed and assembled.
- Limited 5 year warranty.
- For use with ELCO Cedar™ System 3" LED Light Engines.
- 2 at the end of the item number denotes Generation 2. Please note Gen 2 and Gen 1 are not cross compatible.

## Specifications

Lumens	850 lm
Voltage	120/277V
Dimmable	Sunset
Power Factor	≥0.95
Damp Location	Listed

## Dimensions



## Technical Details

### Construction:

- Non-IC Frame for non-IC conditions.
- Airtight housing with gasket to restrict airflow in accordance with ASTM E-283 air-tight requirements.

### Installation:

- Designed for ceiling plenums where 2x6 joists or taller are used.
- Suitable for T-grid and drop ceiling applications.
- See installation sheet for detailed information.

**Junction Box:** Positioned to accommodate straight conduit runs. Two 3/4" knockouts, Seven 1/2" trade size conduit knockouts, One 3/8" knockout. Four Pry-out knockout slots for easy romex installation.

### Electrical:

- Driver is rated for 120V and 277V input (120/277V).
- High Efficiency driver with a power factor > 0.95.

### Dimmability:

- 3 in 1 dimming: Triac, ELV and 0-10V dimming in one driver.
- 0-10V dimming down to 5% with compatible dimmer.
- Can be specified with Lutron drivers for 0.1% and 1% dimming.
- For full list of dimmers refer to the Dimmer Compatibility List.

**Listings:** cUL Listed for Damp Location and for Wet Location with select trims. cUL Listed for Feed Through.

## Product Number

Item	Lumens	Voltage	Dimming
E3LRC08SD	850 lm	120/277V	Sunset

## Product Number Builder Example: E3LRC082

ELCO Cedar 3" Remodel Housing

Lumens

Dimming

Generation

Optional

E3LRC				
08 850 lm	120V Triac/ELV	2 Gen 2	No EM	
10 1000 lm	D 120/277V Triac/ELV0-10V	Gen 1	EM1 Emer. Backup up to 700 lm	
	SD Sunset		EM2 Emer. Backup to 1100 lm	
	L Lutron			

# Compatible Products

For use with 3" Cedar™ Non-IC LED housings



## 3" Cedar™ LED Light Engines



Round Reflector Trim

**E310C**

Finishes:

(W, B, BB, BZ, C, H)



Round Baffle Trim

**E314C**

Finishes:

(W, B, BB, BZ)



Square Pinhole Trim

**E315C**

Finishes:

(W, B, C)



Square Reflector Trim

**E320C**

Finishes:

(W, BB, BZ, C)



Round Pinhole Trim

**E329C**

Finishes:

(W, B, C)

### PRODUCT NUMBER BUILDER

3" Cedar™ Trim	Style	Lumen	Color Temperature	Finish
<b>E3</b>				
	<b>10C</b> Round Reflector	<b>08</b> 850 lm	<b>27</b> 2700K	<b>W</b> All White
	<b>14C</b> Round Baffle	<b>10</b> 1000 lm	<b>30</b> 3000K	<b>B</b> Black w/White Ring
	<b>15C</b> Square Pinhole		<b>35</b> 3500K	<b>BB</b> All Black
	<b>20C</b> Square Reflector		<b>40</b> 4000K	<b>BZ</b> All Bronze
	<b>29C</b> Pinhole Trim		<b>50</b> 5000K	<b>C</b> Chrome w/White Ring
			<b>SD</b> Sunset Dimming	<b>H</b> Haze w/White Ring

## 3" Accessories



Fire Cover

CAT NO.	SPECIFICATIONS
FIRECVR	9 3/4" H x 17" O.D.



Fire Enclosure

CAT NO.	SPECIFICATIONS
FIREENCL	20 3/8" L x 14 3/8" W
FIREENCL-S	Shallow, 16" L x 14 3/8" W



Mica Fire Tape

CAT NO.	SPECIFICATIONS
FIRETAPE	3/4" W x 16' L