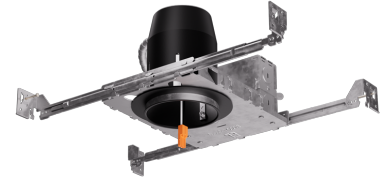


# 3" New Construction Dedicated LED IC Airtight Housing



3" new construction dedicated LED housing. Compatible with MR16 LED lamps with PSA37 or 3" LED inserts.

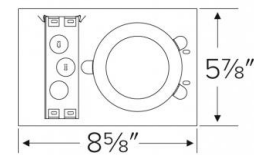
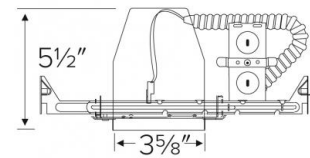
## Features

- Single Wall IC Airtight Housing for use in insulated ceilings.
- Flicker Free LED Dimming.
- Transformer (EL390ICA-7 only): 277V to 120V step-down transformer.
- Trims and inserts sold separately, MR16 LED with PSA37 or 3" Insert.

## Specifications

<b>Wattage</b>	14W MAXW
<b>Voltage</b>	120/277V or 277V
<b>Wet Location</b>	Listed with Shower Trims
<b>Damp Location</b>	Listed

## Dimensions



## Technical Details

**Lamp:** Designed for use with ELCO 3" LED inserts, LED modules, or PSA37 with 3" MR16 trims.

### Construction:

- Single wall IC rated for direct contact with insulation, for use in IC or non-IC conditions.
- Housing adjusts in frame to accommodate up to 1 1/2" ceiling thickness.
- Airtight housing with gasket to restrict airflow in accordance with ASTM E-283 air-tight requirements.
- Steel housing for greater heat dissipation. Stamped galvanized steel frame.

**Installation:** Designed for ceiling plenums where 2x6 joists or taller joists are used. High strength hanger bars can easily be nailed to joists. Maximum hole cutout is 3 5/8". Suitable for t-grid and drop ceiling applications. See installation sheet for detailed information.

**Junction Box:** Positioned to accommodate straight conduit runs. Seven 1/2" trade size conduit knockouts, four 3/4" knockouts. Pry-out knockout slots. 4 Romex pryouts with strain relief.

**Hanger Bars:** Pre-installed hanger bars with True Nail facilitate easy installation in regular lumber, engineered lumber, and laminated beams. Integral T-bar slots for easy installation in T-bars. Spans up to 24" and can be repositioned 90°. Score lines allow for tool-free hanger bar size reduction. Integral leveling flange allows for single-person installation while aligning the housings with the joists.

**Electrical:** • Input Voltage: 120V AC. • Inherently protected.

**Dimmability:** Dimmability based on lamp.

### Listings:

- cUL Listed for Damp Location.
- cUL Listed for Wet Location with select trims.
- cUL Listed for Feed Through.
- cUL Listed for Direct Contact with Insulation and Combustible Material.
- Airtight per ASTM E-283.
- Install a JA8-2016-E lamp/luminaire for Title 24 Compliance.

**Warranty:** ELCO Lighting warrants products will be free from defects in materials and workmanship for a period of 3 years.

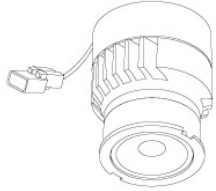
## Product Numbers

Item	Description	Watts	Voltage
<b>EL390ICA</b>		14W MAX	120V
<b>EL390ICA-7</b>	with 277V to 120V Step-Down Transformer	14W MAX	277V
<b>EL390ICA-EMS</b>	Emergency Battery Backup (90 minute)	14W MAX	120/277V

# Compatible Products

For use with Dedicated 3" IC LED Housings

## Koto™ LED Module



**Koto™ LED Module**  
ELK07, ELK09, & ELK11

PRODUCT NUMBER BUILDER					
Koto™ LED Module	Lumens	Color Temperature	Beam Angle		
ELK					
07	750 lm	27 2700K	(blank) 38° lens (Standard)		
09	950 lm	30 3000K	-S 18° lens		
11	1150 lm	35 3500K	-N 25° lens		
		40 4000K	-W 60° lens		
		SD Sunset Dimming (For ELK09 & ELK11)	-FC 18° - 50° Adjustable (ELK07 Only)		

### ACCESSORIES

**Lens**

**EP731C** 18° Lens  
**EP732C** 25° Lens  
**EP733C** 38° Lens  
**EP734C** 60° Lens  
\*EP732C, EP733C, EP734C Included

**Snoot**

**L50W** White  
**L50B** Black

**Secondary Optics**

**L45** Hex Louver  
**L46** Linear Lens  
**L47** Spread Louver  
**L49** Frosted Lens  
**L51** Color Shifter

**Koto™ LED Module with 5-CCT Switch**

**Product Number**

<b>ELK08CT5</b>	825 lm
<b>ELK10CT5</b>	1000 lm

## 3" Pex™ Twist-On Trims

**Deep Reflector**  
**ELK3618**  
 Finishes:  
 (W, BB, BZ, B, C, H)

**Adjustable Gimbal**  
**ELK3629**  
 Finishes:  
 (W, BB, BZ, B, C, H)

**Adjustable Pinhole**  
**ELK3627**  
 Finishes:  
 (B, BB, BZ)

**Adjustable Baffle**  
**ELK3693**  
 Finishes:  
 (W)

**Sq. Deep Reflector**  
**ELK3318**  
 Finishes:  
 (W, BB, BZ, B, C, H)

**Sq. Adjustable Gimbal**  
**ELK3329**  
 Finishes:  
 (W, BB, BZ, B, C, H)

**Sq. Adjustable Baffle**  
**ELK3393**  
 Finishes:  
 (W)

**Sq. Adjustable Pinhole**  
**ELK3327**  
 Finishes:  
 (B, BB, BZ)

**Square Reflector**  
**ELK3341**  
 Finishes:  
 (W, B, BB, BZ)

\*Finishes: **W** - All White, **BB** - All Black, **BZ** - All Bronze, **B** - Black Reflector w/White Ring, **C** - Chrome Reflector w/White Ring, **H** - Haze Reflector w/White Ring

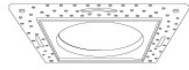
# Compatible Products

For use with Dedicated 3" IC LED Housings

## 3" Flush Mount Trim Adaptors • For use with ELK36 & ELK33 Trims



**Round Flush Mount**  
EL3FMR



**Square Flush Mount**  
EL3FMS

## 3" LED Light Engines



**Round Baffle**

CAT NO.	SPECIFICATIONS
EL311CT3W, BZ	9W, 700 lm, 2700K - 3500K
EL311CT5W	10W, 700 lm, 2700K - 5000K



**Round Reflector**

CAT NO.	SPECIFICATIONS
EL312CT3W, BZ	9W, 700 lm, 2700K - 3500K
EL312CT5W	10W, 710 lm, 2700K - 5000K



**Round Gimbal**

CAT NO.	SPECIFICATIONS
EL313CT3W	9W, 700 lm, 2700K - 3500K
EL313CT5W	10W, 700 lm, 2700K - 5000K



**Square Baffle**

CAT NO.	SPECIFICATIONS
EL331CT3W	12W, 700 lm, 2700K - 3500K



**Square Reflector**

CAT NO.	SPECIFICATIONS
EL33230BZ	9W, 640 lm, 3000K
EL332CT3W, BZ	9W, 700 lm, 2700K - 3500K

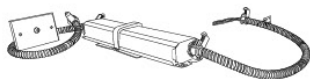


**Pull Down Adjustable**

CAT NO.	SPECIFICATIONS
EL39727W, BZ, N	10.8W, 800 lm, 2700K
EL39730W, B, BZ, N	10.8W, 800 lm, 3000K

\*Finishes: **W** - All White, **B** - All Black, **BZ** - All Bronze, **N** - All Nickel

## 3" Accessories



**Emergency Battery Backup**

CAT NO.	SPECIFICATIONS
KEM-LD5	8W, 120/277V

\* Requires access from above



**Fire Cover**

CAT NO.	SPECIFICATIONS
FIRECVR	9 3/4" H x 17" O.D.



**Fire Enclosure**

CAT NO.	SPECIFICATIONS
FIREENCL	20 3/8" L x 14 3/8" W
FIREENCL-S	Shallow, 16" L x 14 3/8" W



**Mica Fire Tape**

CAT NO.	SPECIFICATIONS
FIRETAPE	3/4" W x 16' L