

# 3" Koto Sylo™ Pendant



## Features

- Modern Pendant Die-Cast aluminum fixture for easy maintenance and upgrades
- Available with 120" Field Cuttable Cable or Stems (12", 24", 36", 48", 60", 72" and 84")
- Includes Standard 38° lens, with 25° and 60° lenses. Optional: 15° and 18° lenses available
- Fits 3 1/2" and 4" Octagon and Round Junction boxes
- Sunset option dims from 3000K to 1800K
- Human Centric option dims from 4000K to 2200K
- Energy Star Certified. Title 24 JA8-2019 Compliant
- Life span of 50,000 hours L70

## Specifications

|                    |           |
|--------------------|-----------|
| <b>Wattage</b>     | 10.5W     |
| <b>Lumens</b>      | 950 lm    |
| <b>Voltage</b>     | 120V      |
| <b>Color Temp.</b> | 2400KK    |
| <b>Dimmable</b>    | Triac/ELV |
| <b>Lamp Type</b>   | LED       |
| <b>Beam Angle</b>  | 38°       |
| <b>CRI</b>         | 95+       |

## Options



## Technical Details

**Optics:** Polycarbonate module lens diffuses light evenly throughout while reducing glare with LED technology.

**Construction:** Integrated driver and light engine with quick connect. Diecast aluminum body with heat fins allows for efficient cooling.

**Installation:** Twist-on design for toolless module installation.

**Electrical:** Module connects to 120V power supply. High-efficiency driver with a power factor >0.9. Start time of less than 0.75 seconds.

**LED Technology:** Extremely accurate Color Rendering Index of 95+. Lumen Maintenance of 50,000 hours L70 Life based on LM80 standardized test results. Superior Thermal Management by utilizing integrated heat sink. Instant On to Full Brightness technology. No LED pixelation.

### Delivered Lumens:

**0327** 2700K/442.8 lm/5W **0330** 3000K/461.2 lm/5W

**0727** 2700K/770 lm/10.5W **0730** 3000K/800 lm/10.5W **0735** 3500K/830 lm/10.5W **0740** 4000K/860 lm/10.5W

**08CT5** 2700K/728.5 lm/10.5W **08CT5** 3000K/886 lm/10.5W **08CT5** 3500K/902 lm/10.5W  
**08CT5** 4000K/920 lm/10.5W **08CT5** 5000K/931 lm/10.5W

**0927** 2700K/912 lm/10.5W **0930** 3000K/950 lm/10.5W **0935** 3500K/990 lm/10.5W **0940** 4000K/1030 lm/10.5W **095D** Sunset/940 lm/10.5W

**10CT5** 2700K/908 lm/12.5W **10CT5** 3000K/1012 lm/12.5W **10CT5** 3500K/1038 lm/12.5W  
**10CT5** 4000K/1040 lm/12.5W **10CT5** 5000K/1032 lm/12.5W

**1124** 2400K/730 lm/12.5W **1127** 2700K/1068 lm/12.5W **1130** 3000K/1112 lm/12.5W **1135** 3500K/1156 lm/12.5W

## Dimensions



5W **1140** 4000K/1202 lm/12.5W **11SD** Sunset/1050 lm/12.5W **11HC** Human Centric/1050 lm/12.5W

**1327** 2700K/1260 lm/12.5W **1330** 3000K/1312 lm/12.5W **1335** 3500K/1365 lm/12.5W **1340** 4000K/1420 lm/12.5W

**1527** 2700K/1439 lm/14.7W **1530** 3000K/1501 lm/14.7W **1535** 3500K/1565 lm/14.7W **1540** 4000K/1627 lm/14.7W

**Dimmability:** For full list of dimmers, refer to the Dimmer Compatibility List. Industry-leading dimming that dims smoothly with no hot spots or flickering.

**Listings:** cUL Listed for Damp Locations. RoHS Compliant. Meets Energy Star & California Title 24 JA8-2019 standards.

**Warranty:** ELCO Products are built to last with a 5-year Limited Warranty.

## Product Number Builder Example: E36PW-0727

| Koto Sylo™ | Style            | Finish  | Koto™ Module  | Color Temp.   | Voltage   | Beam Angle   | Length  |
|------------|------------------|---|---|---|---|--|---|
| <b>E36</b> | <b>P</b> Pendant | <b>W</b> All White<br><b>B</b> All Black<br><b>S</b> All Silver | <b>-03</b> 350 lm (5W) <sup>1, 2</sup><br><b>-07</b> 750 lm (10.5W)<br><b>-09</b> 950 lm (10.5W)<br><b>-11</b> 1150 lm (12.5W)<br><b>-13</b> 1350 lm (12.5W)<br><b>-15</b> 1500 lm (14.7W)<br><b>-18</b> 1800 lm (18.9W)<br>825 lm<br><b>-08</b> (10.5W)(CT5 Only) <sup>1, 3</sup><br>1000 lm<br><b>-10</b> (12.5W)(CT5 Only) <sup>1, 3</sup> | <b>24</b> 2400K<br><b>27</b> 2700K<br><b>30</b> 3000K<br><b>35</b> 3500K<br><b>40</b> 4000K<br><b>SD</b> Sunset <sup>4, 5</sup><br><b>HC</b> Human Centric (-11 only) <sup>1, 6, 7</sup><br><b>CT5</b> <sub>8</sub> 2700K - 5000K <sup>1,</sup> | 120V, Triac/ELV<br><b>D</b> 120/277V, 0-10V/Triac/ELV | 38° lens <sup>9</sup><br><b>-S</b> 18° lens<br><b>-N</b> 25° lens<br><b>-W</b> 60° lens<br><b>-T</b> 10° lens <sup>1, 10</sup> | 120" Cable Mount <sup>11</sup><br><b>-12</b> 12" Stem <sup>12</sup><br><b>-24</b> 24" Stem <sup>12</sup><br><b>-36</b> 36" Stem <sup>12</sup><br><b>-48</b> 48" Stem <sup>12</sup><br><b>-60</b> 60" Stem <sup>12</sup><br><b>-72</b> 72" Stem <sup>12</sup><br><b>-84</b> 84" Stem <sup>12</sup> |

<sup>1</sup> Available as 120V, Triac/ELV only

<sup>2</sup> Available with 2400K, 2700K and 3000K Color Temperature Only

<sup>3</sup> Available with CT5 color temperature only

<sup>4</sup> Available with -09, -11, -13 and -15 lumen outputs only

<sup>5</sup> Sunset, Dim to Warm technology, automatically transitions from 3000K to 1800K when dimmed

<sup>6</sup> Available with 1150 lumen (-11) outputs only

<sup>7</sup> Human Centric, Dim to Warm technology, automatically transitions from 4000K to 2200K when dimmed

<sup>8</sup> Available with -08 and -10 lumen outputs only

<sup>9</sup> Includes 25° and 60° lens in the box

<sup>10</sup> Available with 350 and 750 lumen, 2700K and 3000K options only

<sup>11</sup> 120 inch field cuttable cable

<sup>12</sup> Stem is not field cuttable

# Compatible Products



For use with Dedicated **Koto Sylo™** Fixtures

## Junction Boxes for Koto Sylo™ Ceiling Mount Fixtures



Junction Box with Hanger Bars  
**New Construction**

| CAT NO. | SPECIFICATIONS           |
|---------|--------------------------|
| ELJ4S   | 3 3/4" x 3 3/4" x 2 3/8" |



Junction Box without Hanger Bars  
**New Construction**

| CAT NO. | SPECIFICATIONS           |
|---------|--------------------------|
| ELJ332  | 3 3/4" x 3 3/4" x 2 3/8" |

### Accessories



**Hard Wire Adapter**

| CAT NO. | SPECIFICATIONS |
|---------|----------------|
| PSA38   | Socket Adapter |



**4" Hard Wire Adapter**

| CAT NO. | SPECIFICATIONS |
|---------|----------------|
| PSA38-4 | 4"             |

### Other Compatible Junction Boxes



3 1/2" & 4" Octagon  
**Steel Junction Boxes**

- 4" x 4" x 1 1/2"
- 4" x 4" x 2 1/8"
- 3 1/2" x 3 1/2" x 1 1/2"



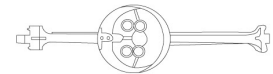
4" Round Surface  
**Mount Box**

4" O.D. x 1 1/2"



3 1/2" Round Old Work  
**(Non-Metallic)**

4 1/4" O.D. x 3 1/2" I.D. x 2 5/8"



3 1/2" & 4" Round New Work  
**(Non-Metallic)**

4" O.D. x 2 3/16"  
3 1/2" O. D x 2 3/4"

## Accessories



**Emergency Battery Backup**

| CAT NO. | SPECIFICATIONS |
|---------|----------------|
| KEM-ERT | 25W, 120/277V  |

## Koto™ LED Module Accessories



**Lens**

|               |          |
|---------------|----------|
| <b>EP731C</b> | 18° Lens |
| <b>EP732C</b> | 25° Lens |
| <b>EP733C</b> | 38° Lens |
| <b>EP734C</b> | 60° Lens |

*\*EP732C, EP733C, EP734C Included*



**Reflectors**

|               |     |
|---------------|-----|
| <b>EP735C</b> | 15° |
| <b>EP736C</b> | 25° |
| <b>EP737C</b> | 38° |
| <b>EP738C</b> | 60° |



**Secondary Optics**

|            |               |
|------------|---------------|
| <b>L45</b> | Hex Louver    |
| <b>L46</b> | Linear Louver |
| <b>L47</b> | Spread Louver |
| <b>L49</b> | Frosted Lens  |
| <b>L51</b> | Color Shifter |



**Snoot**

|             |       |
|-------------|-------|
| <b>L50W</b> | White |
| <b>L50B</b> | Black |



**ELCO Lighting**

# Dimmer Compatibility Chart

## Standard Koto™ LED Modules

For ELK07, ELK08CT5, ELK09, ELK10CT5,  
ELK11 & ELK13 Series

### For Reference Only

Testing conducted by ELCO Lighting is not a substitute for and does not imply certification by an independent laboratory or any other standards certification. Refer to manufacturer specifications for more detailed information on product certifications and standards. Consult the dimmer manufacturer prior to installation to ensure compatibility.

| Manufacturer  | Product   | Part Number                                   | Dimmed Light Output Range |
|---|---|---|---------------------------|
| Leviton   | Decora SureSlide® Single Pole with Slide -to-Off  | 6672  | 15% - 100%                |
|   | Leviton Dimmer  | 1K3502  | 5% - 100%                 |
| Lutron  | Vive, 120V, 150W LED/CFL, 600W Incandescent/Halogen, FP, Single Pole/Multi-Location Dimmer, Commercial Application                    | MRF2S-6CL                                     | 12% - 91%                 |
|   | Panel Model, Commercial/Residential Application, FP   | GP (Harrier) Card                             | 10% - 94%                 |
|   | Grafik QS/Mailbox Power Module, 120/220 to 240V AC, LED/Incandescent/Halogen Load Type, Commercial/Residential Indoor Application, FP | LQRJ-WPM-6P                                   | 10% - 95%                 |
|   | Grafik Eye 3000/HomeWorks, 120V, Incandescent/Fluorescent Load Type, Commercial/Residential Application, FP                           | HWI-WPM-6D-120                                | 10% - 95%                 |
|   | Panel Dimming Module, 120V, Commercial/Residential Application, FP  | HW/LP-RPM-4U-120                              | 10% - 95%                 |
|   | Panel Adaptive Dimming Module, 120V, Commercial/Residential Application, FP   | HW/LP-RPM-4A-120                              | 9% - 95%                  |
|   | HomeWorks® QS for CFL/LED loads, 120V, RP, Commercial/Residential Application   | LQSE-4A1-D/MQSE-4A1-D/<br>MQSE-3A1/MQSE-2A1-D | 8% - 95%                  |
|   | Energi Savr Node LED+ Phase Adaptive, Commercial Application, Reverse Phase, (Zone 1) (Zones 2-4)                                     | QSN-4A5-S                                     | 8% - 95%                  |
|   | Energi Savr Node LED+ Phase Adaptive, Commercial Application, Forward Phase, (Zone 1) (Zones 2-4)                                     | QSN-4A5-S                                     | 10% - 97%                 |
|   | RadioRA®2, 120V, 50/60-Hz, 150W LED or 600W Incandescent/Halogen, 3-Way & 4-Way, Residential Application                              | RRD-6CL                                       | 10% - 95%                 |
|   | RadioRA®3, 120V, 250W LED/CFL or 500W Incandescent/Halogen, Single Pole, Multi-Location   | RRST-PRO-N                                    | 10% - 95%                 |
|   | HomeWorks® QS, 120V, 60-Hz, 150W LED/CFL or 600W Incandescent/Halogen/MLV, Residential Application                                    | HQRD-6CL(H2)<br>HQRA-6CL(H2)                  | 10% - 95%                 |
|   | Homeworks QS, Residential Application, Reverse Phase  | LQSE-4A-120-D                                 | 8% - 89%                  |
|   | HomeWorks® for LED/Incandescent/Halogen loads, Reverse Phase, (Zone 1) (Zones 2-4)  | LQSE-4A5-120-D                                | 8% - 89%                  |
|   | HomeWorks® for LED/Incandescent/Halogen loads, Forward Phase, (Zone 1) (Zones 2-4)  | LQSE-4A5-120-D                                | 10% - 100%                |
|   | Ariadni® C-L Single Pole/3-Way, 150W LED/CFL or 600W Incandescent/Halogen   | AYCL-153P                                     | 10% - 100%                |
|   | Skylark Contour® C-L, Single Pole/3-Way, 150W LED/CFL or 600W Incandescent/Halogen  | CTCL-153P                                     | 10% - 100%                |
| Skylark® C-L Single Pole/3-Way, 150W LED/CFL or 600W Incandescent/Halogen | SCL-153P  | 10% - 100%                                    |                           |

Integrating our lighting with your Smart Home System is a breeze. Simply check your Smart Home system for compatible smart switches and cross reference that with our Dimming Compatibility Chart. Once the switches are integrated with your Smart Home system your lights will be ready to go.



2042 E. Vernon Ave. Vernon CA 90058 Tel 323.231.2600 Fax 323.231.3200 elcolighting.com

| Manufacturer | Product   | Part Number | Dimmed Light Output Range |
|--------------|---|-------------|---------------------------|
| Lutron       | Diva® Series 150W Single Pole/3-Way Dimmer  | DVCL-153P   | 10% - 100%                |
|              | Skylark Contour® Single Pole/3-Way 1000W Incandescent/Halogen   | CT-103P     | 10% - 100%                |
|              | Skylark® Single Pole 300W ELV Preset Dimmer   | SELV-300P   | 5% - 100%                 |
|              | Skylark® Single Pole 600W Incandescent/Halogen, Slide-to-Off Dimmer   | S-600P      | 5% - 100%                 |
|              | Diva® 300W Single Pole/3-Way ELV Dimmer   | DVELV-303P  | 10% - 100%                |
|              | Diva® 600W Single Pole Incandescent/Halogen Preset Dimmer   | DV-600P     | 5% - 100%                 |
|              | Ariadni® 600W Single Pole Magnetic Low Voltage Dimmer   | AYLV-600P   | 5% - 100%                 |
|              | Ariadni® 600W Single Pole/3-Way Incandescent/Halogen Dimmer   | AY-603P     | 5% - 100%                 |
|              | Maestro® 600W Single Pole/3-Way ELV Dimmer  | MAELV-600   | 5% - 100%                 |
|              | Maestro® C-L Single Pole/3-Way Dimmer. 150W Max for LED/CFL or 600W Max for Incandescent/Halogen  | MACL-153M   | 10% - 100%                |
|              | Caséta® Wireless Dimmer   | PD-6WCL     | 10% - 100%                |
| SnapOne™     | Control4® Centralized 8-Channel Adaptive Phase Dimmer, 120/277V AC, 50/60-Hz, 200W LED, 500W Fluorescent/CFL, 1000W Incandescent/Halogen/ELV/MLV* | C4-DIN-8APD | 5% - 100%                 |
|              | Control4® Centralized 8-Channel Forward Phase Dimmer, 100/120V AC, 50/60-Hz, 200W LED, 500W Fluorescent/CFL, 1000W Incandescent/Halogen/MLV*      | C4-DIN-8FPD | 25% - 100%                |
|              | Control4® Wireless Adaptive Phase Dimmer, 120V AC, 50/60-Hz, 120W LED, 300W Fluorescent/CFL, 600W Incandescent/Halogen                            | C4-APD120   | 23% - 100%                |
|              | Control4® Forward Phase Dimmer, 120V AC, 50/60-Hz, 200W LED, 500W Fluorescent/CFL, 1000W Incandescent/Halogen                                     | C4-FPD120   | 4% - 100%                 |
|              | Control4® Essential Forward Phase Dimmer, 120V AC, 60-Hz, 300W LED, 300W Fluorescent/CFL, 600W Incandescent/Halogen                               | C4-V-FPD120 | 1% - 100%                 |

\*MLV each transformer must be loaded to at least 50% of its maximum load

**\*NOTE: Refer to dimmer manufacturer’s documentation for installation instructions and circuit details**

Disclaimer: Minimum and maximum loads for LEDs and CFLs are given in number of lamps and may vary depending on the lamp being used. Testing conducted by ELCO Lighting is not a substitute for and does not imply certification by an independent laboratory or any other standards certification. Refer to manufacturer specifications for more detailed information on product certifications and standards.

Integrating our lighting with your Smart Home System is a breeze. Simply check your Smart Home system for compatible smart switches and cross reference that with our Dimming Compatibility Chart. Once the switches are integrated with your Smart Home system your lights will be ready to go.



2042 E. Vernon Ave. Vernon CA 90058 Tel 323.231.2600 Fax 323.231.3200 elcolighting.com